

# 2021 FALL SEED GUIDE

Brought to you by the  
University of Nebraska Variety  
Testing Program

- University of Nebraska - Lincoln Extension
- Institute of Agriculture and Natural Resources
- Department of Agronomy & Horticulture



## TABLE OF CONTENTS

Table of Contents.....	2
Authors and Acknowledgment.....	3
Winter Wheat Performance Summary.....	4-5
Wheat Trial Location Map.....	6
Monthly Precipitation at Trial Locations.....	6
Location Summary and Overview Table.....	7
Soil Type, Previous Crop, Fertilizers and Herbicides/Fungicides Applied.....	8
Entries and Company Information.....	9
Wheat Characteristics Tables.....	10-13
Wheat Variety Tests.....	14-27
Wheat Rankings at all locations.....	28-33
Cheyenne County Winter Wheat Sawfly Ratings.....	34-35
Winter Triticale Variety Tests.....	36-37
Winter Barley Variety Tests.....	38

# UNL EXTENSION CIRCULAR 103

## FALL SEED GUIDE

- August 2021 -

### AUTHORS

Cody Creech.....	Department of Agronomy/Horticulture; Scottsbluff
Amanda Easterly.....	Department of Agronomy/Horticulture; Sidney
Katherine Frels.....	Department of Agronomy/Horticulture; Lincoln
P. Stephen Baenziger.....	Department of Agronomy/Horticulture; Lincoln
Brian Maust.....	Department of Agronomy/Horticulture; Lincoln
Stephen Wegulo.....	Plant Pathology Department; Lincoln

### ACKNOWLEDGMENTS

This circular is a progress report of variety performance trials conducted by personnel of the Agronomy Department, West Central, and Panhandle Research and Extension Centers and their associated agricultural laboratories. Conduct of experiments and publication of results is a joint effort of the Agricultural Research Division and the Cooperative Extension Service. Tests were supported in part by fees paid by commercial seed companies and the Nebraska Wheat Board.

Special acknowledgment is made to farmer cooperators who furnished land for experiments; also to Extension Educators and others who assisted with the tests. The authors wish to acknowledge the assistance of the technical support staff: Stephen Geu, Greg Dorn, Mitch Montgomery, Fang Wang, Gary Mahnken, Justin Richardson, Kenny Rhodes, Toby Spiehs, Robert Klein, Jake Hansen, and Bill Struckmeyer. Their help is vital to this research.

We would like to thank the Nebraska Wheat Board for contributing wheat check-off money and the Nebraska Agricultural Statistics Service for compiling data on varieties and production of wheat.

This circular reports data from winter wheat trials conducted throughout Nebraska. Entries include commercial varieties and promising experimental lines from Nebraska, surrounding states, and private breeders. The state has been divided into four districts for the purposes of variety testing (Panhandle, West Central, South Central, and East).

There were 18 trials planted across Nebraska in the fall of 2020. Names of cooperators, trial locations, planting dates, harvest dates, highest location mean yield, and mean of top five varieties are shown in Table A. Location specific information such as soil type, tillage, previous crop, and fertilizer applications when available are shown in Table B. Plot sizes varied with location. Six row wide and 20 to 35 feet long plots were planted across locations. All tests were direct combined. Entries were replicated 3 to 6 times. Yield values are corrected to 12% moisture.

Protein data were collected from two replicates at each location. The protein data was combined within each district and reported in the district tables. Protein was determined from whole grain using a Perten DA 7250 Near Infrared Spectrometer. Protein is corrected to 14% moisture, the correction factor used in most analytical standards. Please refer to the UNL Crop Variety Testing Home Page (<https://cropwatch.unl.edu/varietytest>) for individual site yields, disease score, and other relevant information.

Results of spring wheat variety trials will be posted on the UNL Crop Variety and Hybrid Testing Program CropWatch page and published in the 2022 Spring Seed Guide.

## WINTER WHEAT PERFORMANCE

According to the National Agricultural Statistics Service, winter wheat was sown on 0.90 million acres in Nebraska last year. 0.78 million acres were harvested producing a projected 40 million bushels of grain. The average winter wheat yield of Nebraska for all wheat harvested during the summer of 2021 was projected to be 51 bushels per acre (bu/ac). Winter wheat yields and production from the previous 10 years are reported below.

**Average Nebraska Winter Wheat Yield (all practices)**

Year	2012	2013	2014	2015	2016	2017	2018	2019	2020	2021
Yield (bu/a)	41	35	49	38	54	46	49	57	41	51
NE Total Production (million bu)	53	40	71	46	71	47	49	55	34	40

Source: National Agricultural Statistics Service (<http://www.nass.usda.gov>)

Yielding ability of different varieties cannot be measured with absolute accuracy because of variations in local disease incidence, soil fertility, seasonal rainfall or moisture, and other factors. For this reason, small differences in yield have no significance. Unless the difference in performance of two varieties is greater than the difference required for least significance difference (LSD) shown in the tables, little confidence can be placed in the superiority of one variety over the other for measured traits in that particular test. These differences are shown at the 10% level, meaning that differences as large or larger could be expected through chance alone in 1 of 10 trials (10%). Even though two varieties are not statistically different, there may be other factors such as disease resistance, grain quality, agronomic desirability or availability of seed which may influence the choice of one variety over the other.

Complementary varieties are important when selecting additional varieties to grow. One definition of complementary varieties is that they come from diverse parentages. In order to help select varieties with diverse parentages, the related families of many varieties are included in the characteristics chart.

## RESULTS AT INDIVIDUAL LOCATIONS

### East:

There were three rainfed trials conducted in the East District in Saunders, SaundersIM (Intensive Management) and Lancaster counties. Site specific management, soil type, and previous crops are shown in Table B.

- The Saunders County Rainfed trial was planted on September 25th into disked ground previously in oats. 80 lb/a N was applied at greenup in the spring. Harmony Extra and 2,4-D herbicides were applied in April. Plots were harvested on July 8th with a top yield of 94 bu/ac and an average yield of 84 bu/ac.
- The SaundersIM County Rainfed trial was planted on September 25th, where the previous crop was oats. 40 lb/a N was applied at greenup and 80 lb/a N was applied at Feekes 5. Harmony Extra and 2,4-D herbicides were applied in April. Prosaro fungicide was applied on May 24th. Plots were harvested on July 8th with a top yield of 104 bu/ac and an average yield of 88 bu/ac.
- The Lancaster County Rainfed trial was planted on September 23rd into disked oat stubble. 80 lb/a N was applied preplant and 70 lb/a of N in the spring. Finesse was applied preplant and Prowl H2O plus 2,4-D herbicides in the spring for weeds. Plots were harvested on July 2nd with a top yield of 86 bu/ac and an average yield of 66 bu/ac.

### South Central:

Three rainfed trial was conducted in the South-Central District in Jefferson, Clay, and Gosper counties. Site specific management and previous crops are shown in Table B.

- The Jefferson County Rainfed trial was planted on October 7th no-till into soybean stubble. 100 lb/A potash was applied in the fall and 130 lb/a N fertilizer were applied in the spring. Harmony Extra herbicide and generic Quilt fungicide were applied in the spring and Miravis Ace fungicide and Lorsban insecticide were applied at late heading. Plots were harvested on July 9th with a top yield of 121 bu/ac and an average yield of 109 bu/ac.
- The Clay County Rainfed trial was planted on September 24th into disked soybean stubble. 120 lb/a N was applied and Prowl H2O was used for weed control. Plots were harvested on July 6th with a top yield of 88 bu/ac and an average yield of 67 bu/ac.
- The Gosper County Rainfed trial was planted on October 1st into no-till soybean stubble. 60 lb/a N and 5 lb/a S fertilizer, 2,4-D LV6 and Detonate herbicides and Mustang Maxx insecticide were applied in early April. Plots were harvested on July 16th with a top yield of 55 bu/ac and an average yield of 44 bu/ac.

### West Central:

Five locations were planted in the West Central District. One irrigated trial was planted in Chase County. Rainfed trials were planted in Red Willow, Lincoln, Perkins, and Keith counties. Most rainfed sites were left fallow during the previous growing season with corn or wheat as the previous crop (Table B).

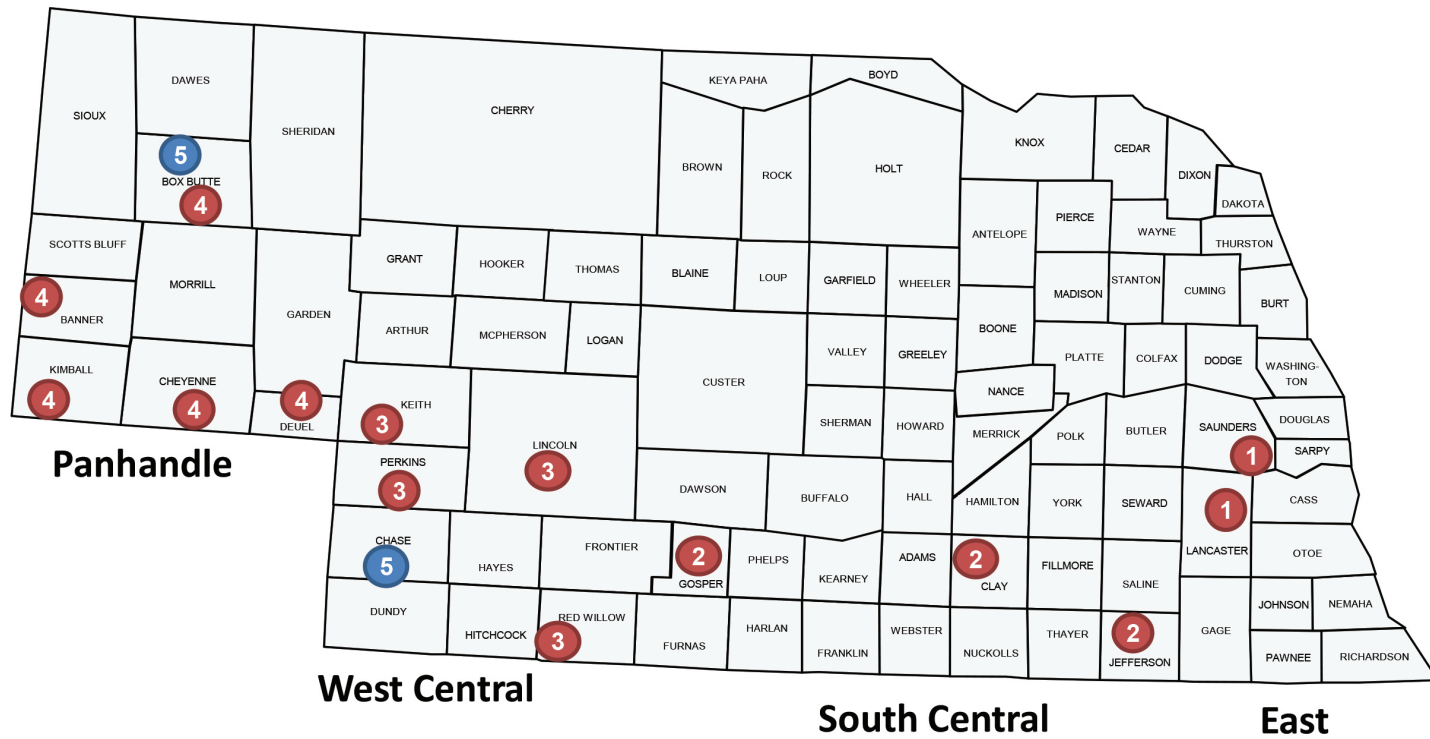
- The Chase County Irrigated trial was planted on October 2nd into minimally tilled soybean ground. Plots were harvested on July 15th with a top yield of 79 bu/ac and an average yield of 69 bu/ac.
- The Red Willow County Rainfed trial was planted on September 22nd into minimum-tilled ground following corn fallow. 40 lb/a 40 Rock was applied in-furrow at planting and 20 GPA 32-0-0 and 1 GPA KQ XRN in April. Amber was used for weed control and Twinline fungicide was applied in May. Plots were harvested on July 8th with a top yield of 130 bu/ac and an average yield of 118 bu/ac.
- The Lincoln County Rainfed trial was planted on September 22nd no-till into corn fallow. 60 lb/a of 32-0-0 was applied preplant and 40 lb/a 40 Rock in-furrow at planting. Prowl H2O herbicide was applied in April. Plots were harvested on July 13th with a top yield of 85 bu/ac and an average yield of 71 bu/ac.
- The Perkins County Rainfed trial was planted on September 17th no-till into corn fallow. 40 lb/a 40 Rock was applied in-furrow at planting. Amber and RoundUp were applied preplant and Prowl H2O herbicide in the spring for weed control. Plots were harvested July 14th with a top yield of 113 bu/ac and an average yield of 100 bu/ac.
- The Keith County Rainfed trial was planted on September 17th no-till into corn fallow. 40 lb/a 40 Rock was applied in-furrow at planting. Plots were harvested on July 9th but yields showed high spatial variability and data is not presented.

### Panhandle (West):

Seven locations were planted in the Panhandle (West District). One irrigated trial was planted in Box Butte County. Rainfed trials were planted in Deuel, Cheyenne, CheyenneIM (Intensive Management), Kimball, Box Butte, and Banner counties. All rainfed sites were left fallow the previous year (Table B).

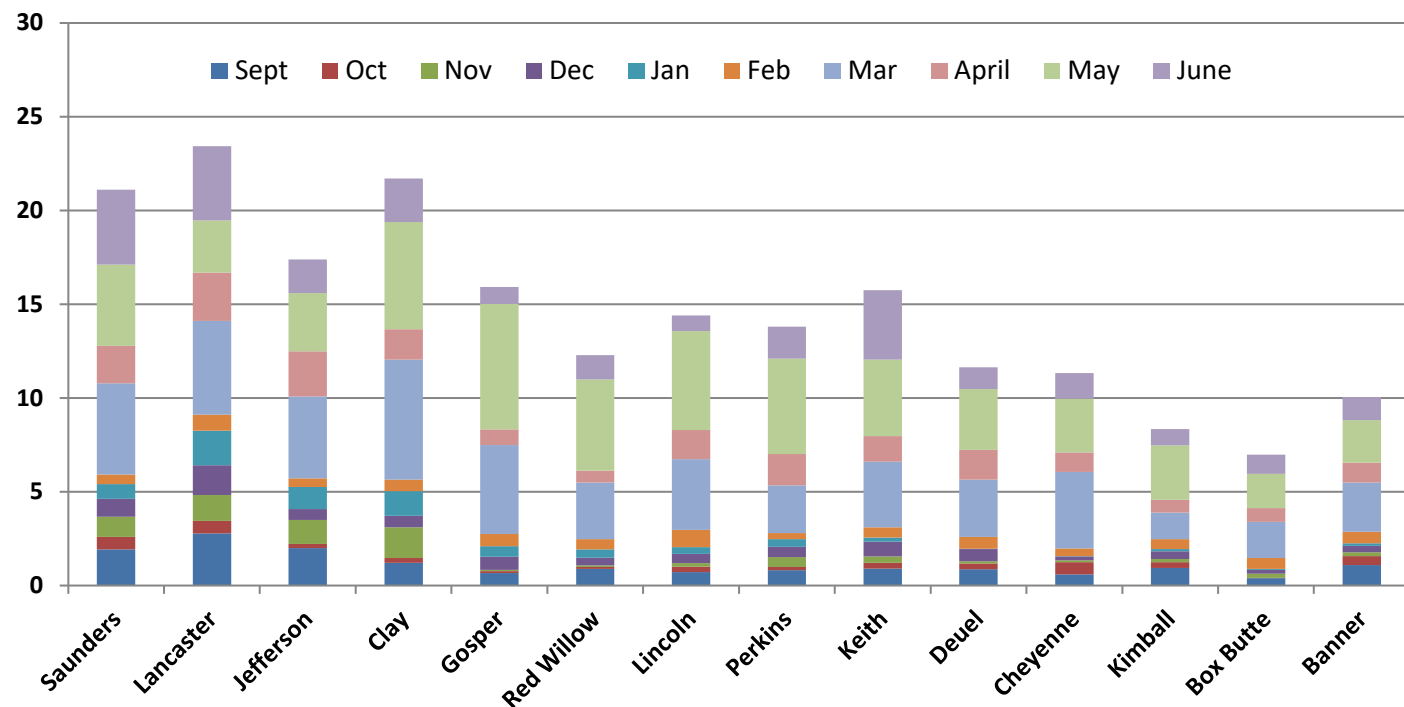
- The Box Butte County Irrigated trial was planted on September 23rd into disked dry bean stubble. 65 lb/a 40 Rock was applied in-furrow at planting. Prowl H2O herbicide was applied in April. Plots were harvested July 22nd with a top yield of 153 bu/ac and an average yield of 136 bu/ac.
- The Deuel County Rainfed trial was planted on September 18th into conventionally tilled wheat fallow. 40 lb/a 40 Rock was applied in-furrow at planting. Olympus and Prowl herbicide was applied in the spring for weed control. Plots were harvested on July 15th with a top yield of 81 bu/ac and an average yield of 73 bu/ac.
- The Cheyenne County Rainfed trial was planted on September 14th no-till into fallow. 50 lb/a N was applied preplant and 10 lb/a N as 32-0-0 in early spring. RoundUp and LV-6 were used preplant and LV-6 and Prowl H2O in the spring. Plots were harvested on July 19th but yields showed high spatial variability and data is not presented.
- The CheyenneIM (Intensive Management) County Rainfed trial was planted on September 16th no-till into fallow. 50 lb/a N was applied preplant and 40 lb/a 40 Rock in furrow. 10 lb/a N was applied in early spring and 40 lb/a N topdressed at joint. RoundUp and LV-6 herbicides were applied preplant and LV-6 and Prowl H2O in the spring. Plots were harvested on July 21st with a top yield of 63 bu/ac and an average yield of 52 bu/ac.
- The Kimball County Rainfed trial was planted on September 14th into conventionally tilled corn fallow. 40 lb/a 40 Rock was applied in-furrow at planting. Prowl herbicide was applied in the spring for weed control. Plots were harvested on July 20th with a top yield of 97 bu/ac and an average yield of 79 bu/ac.
- The Box Butte County Rainfed trial was planted on September 15th into disked corn fallow. 10 lb/a P was applied preplant and 40 lb/a 40 Rock in-furrow at planting. Prowl was used to control weeds. Plots were harvested on July 22nd with a top yield of 70 bu/ac and an average yield of 57 bu/ac.
- The Banner County Rainfed trial was planted on September 14th into fallow. 40 lb/a 40 Rock was applied in-furrow at planting. Prowl herbicide was applied in the spring for weed control. Plots were harvested on July 20th with a top yield of 102 bu/ac and an average yield of 88 bu/ac.

## 2021 WINTER WHEAT TRIAL LOCATIONS MAP



● Rainfed Sites      ● Irrigated Sites

## 2021 WINTER WHEAT TRIAL SITE PRECIPITATION (inches)



## TABLE A - LOCATION SUMMARY FOR NEBRASKA WINTER WHEAT VARIETY TESTS - 2021

Location	Cooperator	Latitude	Longitude	Dates		Location Mean Yield (bu/a)	
				Plant	Harvest	Top Yield	Site Avg
<b>Southeast</b>							
Saunders Rainfed	UNL ARDC; Ithaca, NE	41.165501	-96.406912	9/25/20	7/8/21	94.3	84.7
SaundersIM Rainfed	UNL ARDC; Ithaca, NE	41.16516	-96.406842	9/25/20	7/8/21	104.0	88.7
Lancaster Rainfed	UNL Havelock Farm; Lincoln, NE	40.853310	-96.609897	9/23/20	7/2/21	85.6	65.9
<b>South Central</b>							
Jefferson Rainfed	Mark Knobel; Fairbury, NE	40.204179	-97.121344	10/7/20	7/9/21	121.4	109.2
Clay Rainfed	South Central Res & Ext Center; Harvard, NE	40.574647	-98.129658	9/24/20	7/6/21	87.7	67.2
Gosper Rainfed	Todd Anderson, Arapahoe, NE	40.401473	-99.895878	10/1/20	7/16/21	55.0	44.2
<b>West Central</b>							
Red Willow Rainfed	Randy Peters; McCook, NE	40.158050	-100.750783	9/22/20	7/8/21	130.4	117.8
Lincoln Rainfed	UNL WCREC Dryland Farm; North Platte, NE	41.047500	-100.752950	9/22/20	7/13/21	85.2	71.4
Perkins Rainfed	UNL Stumpf International Wheat Center; Grant, NE	40.848876	-101.702478	9/17/20	7/14/21	112.8	100.5
Keith Rainfed	UNL WCREC Water Resource Lab; Brule, NE	41.163071	-102.027384	9/17/20	7/9/21	High variability	
<b>Panhandle (West)</b>							
Deuel Rainfed	Larry Flohr; Chappell, NE	41.173917	-102.247230	9/18/20	7/15/21	81.3	72.9
Cheyenne Rainfed	High Plains Ag Lab; Sidney, NE	41.233159	-103.002459	9/14/20	7/19/21	High variability	
CheyenneIM Rainfed	High Plains Ag Lab; Sidney, NE	41.233159	-103.002459	9/16/20	7/21/21	63.2	52.4
Kimball Rainfed	Travis Freeburg / Chad Bomberger; Long Springs, NE	41.407482	-103.984538	9/14/20	7/20/21	97.1	79.1
Box Butte Rainfed	Cullan Farm Seed; Hemingford, NE	42.248447	-103.019717	9/15/20	7/22/21	69.6	56.7
Banner Rainfed	Jim Wyatt; Harrisburg, NE	41.568503	-103.715577	9/14/20	7/20/21	102.2	87.6
<b>Irrigated</b>							
Box Butte Irrigated	Cullan Farm Seed; Hemingford, NE	42.292967	-103.028733	9/23/20	7/22/21	152.8	135.9
Chase Irrigated	Brian Yutzy; Imperial, NE	40.484946	-101.589968	10/2/20	7/15/21	79.2	69.2






**TABLE B - SOIL TYPE, PREVIOUS CROP, FERTILIZERS AND HERBICIDES/ FUNGICIDES APPLIED TO NEBRASKA WINTER WHEAT VARIETY TESTS**

Location	Soil Type	Tillage System	Previous Crop(s)	Fertilizer	Herbicide/Fungicide
<b>Southeast</b>					
Saunders Rainfed	Tomek silt loam	Disked	Oats	80 lb/a N as 34-0-0 applied at greenup	1/3 pt/a 2,4-D + 0.8 oz/a Harmony Extra in April
SaundersIM Rainfed	Tomek silt loam	Disked	Oats	40 lb/a N as 34-0-0 applied at greenup and 80 lb/a N applied at Feekes 5.	1/3 pt/a 2,4-D + 0.8 oz/a Harmony Extra in April, 8.2 oz/ac Provaro applied on May 24
Lancaster Rainfed	Crete & Aksarban silty clay loam	Disked	Oats	80 lbs N applied preplant & 70 lb/a N in April	Finesse 3 oz/a preplant; 2,4-D + Prowl H2O in early April
<b>South Central</b>					
Jefferson Rainfed	Crete silt loam	No-till	Soybean	100 lb/a potash applied in the fall and 130 lb/a N applied as spring topdress	Harmony Extra & generic Quilt applied in spring and 13.7 oz/a Miravis Ace & 1 pt/a Lorsban applied at late heading
Clay Rainfed	Crete silt loams	Disked	Soybean	120 lb/a N	Prowl H2O
Gosper Rainfed	Holdrege silt loam	No-till	Soybean	60 lb/a N, 5 lb/a S, & 1 pt/a N-Stat in early April	12 oz/a 2,4-D LV6, 8 oz/a Detonate & 2 oz/a Mustang Maxx
<b>West Central</b>					
Red Willow Rainfed	Keith & Blackwood silt loams	Minimum till	Fallow (corn)	40 lb/a 40 Rock in-furrow at planting, 20 GPA 32-0-0 and 1 GPA KQ XRN on 4/5/21	0.56 oz/a Amber herbicide was applied in the Fall and 8 oz/a Twinline fungicide on 5/11/21
Lincoln Rainfed	Hall & Holdrege silt loam	No-till	Fallow (corn)	60 lb/a of 32-0-0 applied pre-plant; 40 lb/a 40 Rock in-furrow at planting	2 pt/a Prowl in late April
Perkins Rainfed	Kuma silt loam	No-till	Fallow (corn)	40 lb/a 40 Rock in-furrow at planting	Preplant burndown with Amber and RoundUp; 2 pt/a Prowl in late April
Keith Rainfed	Kuma loam	No-till	Fallow (corn)	40 lb/a 40 Rock in-furrow at planting	2 pt/a Prowl in late April
<b>Panhandle (West)</b>					
Deuel Rainfed	Johnstown-Satanta-Richfield loams	Conventional	Fallow (wheat)	40 lb/a 40 Rock in-furrow at planting; 20 lb/a N in late April	Olympus, 2,4-D, and 2 pt/a Prowl in late April
Cheyenne Rainfed	Duroc & Alliance loam	No-till	Fallow (millet)	50 lb/a N as 32-0-0 preplant; nothing at planting; 10 lb/a N as 32-0-0 in early spring	32 oz/a RoundUp RT3, 16 oz/a LV6, 1% NIS in July 2020; 2 pt/a Prowl H2O late April 2021; 8 oz/a LV6 in early spring
CheyenneIM Rainfed	Duroc & Alliance loam	No-till	Fallow (millet)	50 lb/a N as 32-0-0 preplant; 40 lb/a 40 Rock in furrow at planting; 10 lb/a N as 32-0-0 in early spring; additional 40 lb/a N as 32-0-0 top-dressed at joint	32 oz/a RoundUP RT3, 16 oz/a LV6, 1% NIS on July 8, 2020; 2 pt/a Prowl H2O late April 2021; 8 oz/a LV6 in early spring; TrivaPro A 4 oz/a + TrivaPro B 10.5 oz/a at flag leaf
Kimball Rainfed	Satanta-Altvan complex & Satanta fine sandy loam	Conventional	Fallow (corn)	40 lb/a 40 Rock in-furrow at planting	2 pt/a Prowl in late April
Box Butte Rainfed	Rosebud loam	Disked	Fallow (corn)	40 Rock at 20 lb/a in-furrow at planting; 10 lb P broadcast when field was worked before planting; 30lb N and 10lb S applied in the spring	Prowl H2O; Powerflex; 2,4D LV6 applied in spring; Nexicor fungicide
Banner Rainfed	Bridget very fine sandy loam	Conventional	Fallow (wheat)	50 lb 40 rock in furrow with coulters, 30 lb of N in spring	LV6 and Prowl H2O applied in spring
<b>Irrigated</b>					
Box Butte Irrigated	Rosebud loam	Disked	Dry Bean	65 lb/a 40 Rock at planting in-furrow; 30lb N and 10 lb S applied in spring	Prowl H2O; Powerflex; LV6 applied in spring; Nexicor fungicide
Chase Irrigated	Goshen silt loam	Minimum till	Soybean	NA	NA

**TABLE C - ENTRIES AND CONTACT INFORMATION**

The entrant should be contacted for information on seed availability, adaptation and agronomic characteristics.

<b>AgriPro - Syngenta</b> 11783 Ascher Rd. Junction City, KS 66441 agriprowheat.com	AP Roadrunner, AP Bigfoot (10BC329-17-5), AP 18AX, AP Solid (NP 1300500#49), Spur, SY Legend CL2, SY Wolverine	
<b>CROPLAN by Winfield United</b> 4001 Lexington Ave. N Arden Hills, MN 55126 croplan.com	CP7010, CP7909, CP7050AX, CP7017AX	
<b>Husker Genetics</b> 1071 County Rd G Ithaca, NE 68033 huskergenetics.unl.edu	Freeman, Goodstreak, Overland, Panhandle, Pronghorn, Robidoux, Ruth, Wesley	
<b>Kansas Wheat Alliance</b> 1990 Kimball Ave. Ste 200 Manhattan, KS 66502 kswheatalliance.org	KS Dallas, KS Hamilton	
<b>Limagrain Cereal Seeds</b> 6414 N. Sheridan Wichita, KS 67204 limagraincerealseed.com	LCS Atomic AX, LCS Helix AX, LCS Link, LCS Photon AX, LCS Valiant	
<b>Meridian Seeds</b> 16553 37th St SE, Suite 3 Mapleton, ND 58059 meridianseeds.com	MS Iceman, MS Maverick	
<b>NuPride Genetics</b> P. O. Box 830911 Lincoln, Nebraska 68583-0911 necrop.org	Infinity CL, Settler CL, Siege (NE12561)	
<b>PlainsGold</b> Colorado State University Fort Collins, CO 80523 plainsgold.com	Canvas, Crescent AX, Fortify SF, Guardian, Whistler	
<b>WestBred</b> 800 N. Lindbergh Ave. St. Louis, MO 63167 westbred.com	WB4269, WB4303, WB4309, WB4401, WB4418, WB4462, WB4483, WB4595, WB4699, WB4792, WB-Grainfield	

**WINTER WHEAT VARIETY CHARACTERISTICS 2021** (PAGE 1/2)

Variety	Origin	Family	Maturity	Winter Hardiness	Straw Strength	Plant Height	Coleoptile Length		Hessian Fly	Leaf Rust	Stem Rust	Soil Borne Mosaic	Wheat Streak Mosaic	Stripe Rust	Tan Spot	Bushel Weight	Grain Protein	Target Environment in Nebraska	Other Information
AP 18AX	AgriPro	--	2	3	3	4	5		5	6	3	5	3	2	4	3	5	Grassy weed issues	
AP Bigfoot	AgriPro	--	2	4	4	3	5		9	3	2	5	5	4	3	2	2	Statewide	
AP Roadrunner	AgriPro	--	3	4	2	6	5		2	2	8	1	4	2	6	4	3	Statewide	
AP Solid	AgriPro	--	4	4	5	4	5		9	5	5	--	6	7	4	3	2	Sawfly	
Canvas	CSU	Denali/Antero//Byrd	3	5	5	5	5		3	6	2	--	3	3	--	3	5	Irrigated/Higher Rainfall	Increase seed rate 10%
CP7000AX	CROPLAN	--	--	--	--	--	--		--	--	--	--	--	--	--	--	--		CoAxium
CP7017AX	CROPLAN	--	3	5	5	5	--		--	5	1	--	--	3	--	8	4	All. Good on dry and acid soils	CoAxium
CP7050AX	CROPLAN	--	1	3	4	5	--		--	3	5	--	--	1	--	2	2	Eastern, high management	CoAxium
CP7909	CROPLAN	--	3	5	3	8	--		--	1	1	--	--	1	--	3	2	West, high yield environments	
Crescent AX	CSU	(AF28/Byrd)/(AF10/2*Byrd)	1	4	4	5	5		--	6	--	--	2	4	--	3	8	Grassy Weed Pressure	Requires Agreement
Epoch	USDA-NE	unique	2	5	3	2	--		8	3	2	1	7	3	--	3	--	Irrigated production	
Fortify SF	CSU	Byrd/Bearpaw//Byrd	4	5	3	5	3		9	7	4	--	2	7	--	4	6	Wheat Stem Sawfly Acres	13 Solidness (Pith)
Freeman	NE	(ABI86*3414/JAG//K92)/ALLIANCE	3	5	3	2	2		Seg	6	2	1	9	8	--	6	5	All NE	
Goodstreak	NE	Colt	3	4	4	8	9		6	8	3	9	9	--	--	2	4		
Guardian	CSU	Antero/Snowmass//Byrd	3	5	2	6	5		9	4	2	7	2	3	--	2	1	Dryland	Certified Seed Only
Infinity CL	NE	Windstar, Above, Millennium	4	4	5	7	4		9	5	3	3	3	7	3	7	--	--	--
KS Dallas	KSU	Danby	3	5	4	6	6		7	3	2	6	2	6	8	7	7	Southwest	Improved temperature resistance to WSMV
KS Hamilton	KSU	Bill Brown	3	5	4	5	4		1	5	3	1	2	7	7	7	7	Southwest	Improved temperature resistance to WSMV
LCS Atomic AX	Limagrain	--	1	4	6	2	7		--	2	9	1	--	1	--	5	5	All	Very good FHB tolerance
LCS Helix AX	Limagrain	--	2	4	5	4	9		--	4	1	1	--	2	--	2	3	All	Very good FHB tolerance
LCS Link	Limagrain	Diverse	5	5	6	5	6		--	2	1	1	6	5	3	4	5	All	Good FHB tolerance/Irrigated wheat
LCS Photon AX	Limagrain	--	--	--	--	--	--		--	6	9	3	--	2	--	--	--		
LCS Valiant	Limagrain	Camelot	2	5	5	4	6		1	5	4	1	8	3	--	4	3	All	Very good FHB tolerance
MS Iceman	Meridian	--	3	--	5	3	7		--	2	5	--	--	7	--	1	2		
MS Maverick	Meridian	--	4	--	3	5	6		--	1	3	--	--	1	--	2	2		
NE14696	NE	--	--	--	--	--	--		9	5	3	1	--	3	--	--	--		
NE15624	NE	--	--	--	--	--	--		9	7	3	1	--	5	--	--	--	Does well across NE.	
NE16563V	NE	--	--	--	--	--	--		9	3	1	1	--	3	--	--	--		
NE17441	NE	--	--	--	--	--	--		9	7	1	1	--	9	--	--	--	Does well in SW and W NE.	
NE17443	NE	--	--	--	--	--	--		9	5	1	Seg	--	5	--	--	--	Does well in SW and W NE.	
NE17544	NE	--	--	--	--	--	--		5	9	1	9	--	7	--	--	--	Does best in western NE.	
NHH17450	NE	--	--	--	--	--	--		9	9	5	1	--	3	--	--	--	Does better to the south.	2 gene Clearfield line
NHH17612	NE	--	--	--	--	--	--		9	7	4	Het.	--	3	--	--	--	Does better to the north.	2 gene Clearfield line

1 = Early 5 = Late    1 = Tender 5 = Hardy    1=Weak 6=Strong    1 = Short 9 = Tall    1 = Short 9 = Long    1 = Resistant 9 = Susceptible    Seg = Segregating    1 = High 9 = Low



WINTER WHEAT VARIETY CHARACTERISTICS 2021 (PAGE 2/2)

Variety	Origin	Family	Maturity	Winter Hardiness	Straw Strength	Plant Height	Coleoptile Length		Hessian Fly	Leaf Rust	Stem Rust	Soil Borne Mosaic	Wheat Streak Mosaic	Stripe Rust	Tan Spot	Bushel Weight	Grain Protein	Target Environment in Nebraska	Other Information
NW13493	NE	Diverse, sib of NW13570	2	4	4	4	--		9	3	1	1	7	2	--	3	--		
NW15443	NE	--	--	--	--	--	--		4	9	1	5	--	5	--	--	--		
Overland	NE	Millennium, Wahoo	4	5	5	5	--		9	3	4	9	5	5	6	2	--		
Panhandle	NE	NE97426 /NE98574	4	4	4	7	7		9	6	3	4	9	8	--	6	8	Western NE	
Pronghorn	NE	Colt	3	4	3	8	9		9	7	3	9	9	--	--	5	5		
PSB13NEDH-14-83W	NE	--	--	--	--	--	--		1	3	3	1	--	8	--	--	--		
Robidoux	NE	Wahoo, Millennium	3	4	--	5	6		9	8	1	3	9	4	--	5	--		
Ruth	NE	OK98697'/'Jagalene'/'Camelot	4	4	4	5	7		5	8	1	1	9	7	--	1	4		
Scout 66	NE	Ponca	3	3	1	9	8		9	7	5	9	7	3	9	4	5		
Settler CL	NE	Infinity, Millennium, Wesley	3	5	--	1	6		9	5	4	1	5	8	--	--	--		
Siege	NE	Robidoux	4	4	5	3	--		3	4	2	1	7	2	--	2	--		
Spur	APSY/Montana State	MT2113*4/MTS0359	5	5	5	5	5		--	4	--	--	9	4	--	6	3	Sawfly	
SY Legend CL2	AgriPro	--	3	4	2	4	5		9	5	--	5	4	4	3	2	3	Grassy weed issues	
SY Wolverine	AgriPro	--	2	4	5	3	5		9	2	2	1	4	7	3	2	2	Statewide	
Turkey	Ukraine	--	5	4	2	9	9		9	7	7	9	5	8	--	3	1		
WB4269	Bayer	--	1	4	3	3	5		8	2	4	3	8	3	8	3	2	Eastern Dryland	Very Good FHB tolerance. Certified Seed Only
WB4303	Bayer	--	2	3	6	4	5		6	3	3	2	5	8	8	5	2	Western Irrigated	Excellent Mill/Bake
WB4309	Bayer	--	2	4	3	4	5		--	5	4	4	7	4	8	3	2	Western Dry, Irrig	Very Good Drought/Heat Tolerance. Certified Seed Only
WB4401	Bayer	--	2	4	4	5	5		5	4	4	2	7	2	5	4	4	Eastern Dryland	Good FHB tolerance. Certified Seed Only
WB4418	Bayer	--	3	4	6	4	6		2	4	3	2	5	4	7	4	4	Western Dry, Irrig	Good sawfly tolerance for light to moderate infestations. Certified Seed Only
WB4462	Bayer	--	2	4	2	7	6		8	3	4	2	8	7	6	4	3	Western Dryland	Excellent tough acre variety with excellent drought and heat tolerance
WB4483	Bayer	--	4	5	5	5	6		--	5	7	6	6	7	4	5	5	Sawfly Acres	Solid Stem Variety with very good yield potential. Certified Seed Only
WB4595	Bayer	--	3	5	5	5	6		6	4	3	7	5	4	6	2	4	Western Dry, Irrig	Excellent drought and heat tolerance. Good sawfly tolerance for light to moderate infestations. Certified Seed Only
WB4699	Bayer	--	3	4	5	3	5		5	3	2	3	5	5	4	6	6	Eastern Dryland	Excellent yield potential, standability with a very good disease package. Very Good FHB tolerance. Certified Seed Only
WB4792	Bayer	--	4	5	5	6	6		4	2	4	7	5	4	6	4	4	Western Dry, Irrig	Excellent drought and heat tolerance. Good sawfly tolerance for light to moderate infestations. Certified Seed Only
WB-Grainfield	Bayer	KSU	2	5	3	5	5		8	8	1	1	6	8	5	--	--	Central; Western	
Wesley	ARS-NE	Sumner	3	5	5	2	1		9	8	1	1	9	7	5	7	4		
Whistler	CSU	Byrd, Snowmass	5	5	1	7	5		9	6	1	--	2	3	--	6	5	Dryland	

1 = Early 5 = Late    1 = Tender 5 = Hardy    1=Weak 6=Strong    1 = Short 9 = Tall    1 = Short 9 = Long    1 = Resistant 9 = Susceptible    Seg = Segregating    1 = High 9 = Low



## EAST DRYLAND WHEAT VARIETY TESTS - 2021 SAUNDERS, SAUNDERS(IM), AND LANCASTER COUNTIES

Variety	Brand	Average Yield (bu/a)[1]	Saunders Yield (bu/a)	Saunders IM Yield (bu/a)	Lancaster Yield (bu/a)	Bushel Weight (lb/bu)	Plant height (in)	Grain Protein (%) [2]	Seed Weight (seeds/lb)
WB4401	WestBred	92.0	94.3	104.0	77.7	56.3	36.9	11.8	13155
NHH17612	UNL-Experimental	89.8	93.7	97.9	77.6	58.7	38.1	12.7	17277
Siege	NuPride Genetics	89.2	92.7	100.2	74.6	59.4	38.2	13.1	13717
LCS Valiant	Limagrain Cereal Seeds	87.8	89.7	95.6	78.1	58.4	36.3	12.8	14903
WB4699	WestBred	87.4	81.7	94.7	85.6	56.0	32.8	11.9	20366
WB4269	WestBred	86.9	88.1	95.2	77.4	57.1	34.4	12.3	17031
WB4303	WestBred	86.9	91.4	91.3	78.0	55.7	34.1	13.0	16496
NW15443	UNL-Experimental	84.8	89.6	99.7	65.0	57.0	42.0	12.4	14358
Ruth	Husker Genetics	84.0	89.6	94.1	68.2	57.6	40.0	12.1	16932
NHH17450	UNL-Experimental	82.3	92.8	91.5	62.7	57.8	40.6	12.8	16359
Overland	Husker Genetics	80.9	84.8	91.3	66.5	56.7	40.1	12.6	16803
WB-Grainfield	WestBred	77.8	80.6	93.7	59.2	56.5	38.9	11.8	18429
NE17544	UNL-Experimental	75.4	84.1	86.4	55.8	57.4	43.4	12.7	16650
Wesley	Husker Genetics	73.1	85.6	78.9	54.7	54.4	36.8	12.9	17132
NE17441	UNL-Experimental	72.0	74.6	79.8	61.6	55.2	36.2	12.1	17909
PSB13NEDH-14-83W	UNL-Experimental	70.8	75.7	81.5	55.1	55.7	41.5	12.4	17791
Freeman	Husker Genetics	70.5	75.1	76.4	60.0	54.1	38.5	12.4	18135
Scout 66	Check	63.6	74.1	67.6	49.0	57.8	47.6	13.7	14781
Turkey	Check	60.4	71.2	64.8	45.3	56.2	48.1	13.7	16625
<b>Average of all entries</b>		<b>79.8</b>	<b>84.7</b>	<b>88.7</b>	<b>65.9</b>	<b>56.7</b>	<b>39.2</b>	<b>12.6</b>	<b>16571</b>
<b>Standard deviation</b>		<b>9.3</b>	<b>3.2</b>	<b>4.1</b>	<b>6.4</b>	<b>1.4</b>	<b>4.1</b>	<b>0.6</b>	<b>1757</b>
<b>LSD [3]</b>		.	<b>5.4</b>	<b>6.9</b>	<b>10.8</b>	.	.	.	.
<b>Coefficient of variation [4]</b>		.	<b>3.8</b>	<b>4.6</b>	<b>9.8</b>	.	.	.	.

[1] Yield values corrected to 12% moisture and 60 lb/bu test weight.

[2] Protein corrected to 14% moisture, the correction factor used in analytical standards.

[3] For differences between varieties that are equal to or greater than the LSD value, the chance that the difference is significant is 90%.

[4] Coefficient of Variation (CV) indicates the quality of a trial, and lower than 15 indicates a high quality trial. For CV>15, there was higher than expected variability in the field or the data and the results should be used with caution.



## EAST DRYLAND AVERAGE WHEAT PERFORMANCE

Variety	Brand	Grain Yield (bu/a)	Bushel Weight (lb/bu)	Plant Height (inches)	Grain Protein (%)
<b>Two-year (2020-2021) averages</b>					
WB4401	WestBred	88.9	57.4	34.6	11.6
Ruth	Husker Genetics	85.7	59.4	37.9	12.6
WB4699	WestBred	82.4	58.1	30.9	11.9
WB4269	WestBred	81.2	58.4	32.6	12.5
Siege	NuPride Genetics	80.8	60.6	35.8	13.6
WB4303	WestBred	80.2	56.7	32.4	13.4
LCS Valiant	Limagrain Cereal Seeds	79.7	59.7	33.8	13.6
Wesley	Husker Genetics	77.5	57.8	35.1	13.4
Freeman	Husker Genetics	72.4	56.6	36.0	12.9
Turkey	Check	58.0	57.9	45.1	14.4
Scout 66	Check	57.2	58.5	43.8	14.2
<b>Average of all entries</b>		<b>76.7</b>	<b>58.3</b>	<b>36.2</b>	<b>13.1</b>
<b>Three-year (2019-2021) averages</b>					
WB4699	WestBred	87.3	58.0	31.2	12.0
WB4303	WestBred	87.1	56.7	32.4	13.6
LCS Valiant	Limagrain Cereal Seeds	86.2	59.8	34.3	13.6
Ruth	Husker Genetics	84.7	58.4	38.1	12.6
Siege	NuPride Genetics	83.8	60.8	36.2	13.6
WB4269	WestBred	83.1	58.8	32.6	12.5
Freeman	Husker Genetics	76.9	56.4	36.4	12.8
Scout 66	Check	59.2	58.7	44.9	14.2
Turkey	Check	58.5	57.9	46.0	14.3
<b>Average of all entries</b>		<b>79.9</b>	<b>58.3</b>	<b>36.3</b>	<b>13.1</b>





## SOUTH CENTRAL DRYLAND WHEAT VARIETY TEST - 2021 JEFFERSON, CLAY, AND GOSPER COUNTIES

Variety	Brand	Average Jefferson		Clay Yield (bu/a)	Gosper Yield (bu/a)	Bushel Weight (lb/bu)	Plant Height (in)	Grain Protein (%)	Seed Weight (seeds/lb)
		Yield (bu/a)	Yield (bu/a)						
WB4401	WestBred	85.1	116.9	87.7	50.7	58.4	31.9	12.0	16544
AP Roadrunner	AgriPro-Syngenta	81.6	117.6	76.8	50.3	56.3	32.8	13.3	19713
MS Maverick	Meridian Seeds	81.3	113.3	75.8	55.0	57.8	33.3	13.7	17144
Siege	NuPride Genetics	79.9	111.0	80.8	47.8	59.8	32.3	13.4	16219
NHH17450	UNL-Experimental	79.6	113.7	76.8	48.3	57.6	34.3	12.7	17331
LCS Helix AX	Limagrain Cereal Seeds	79.4	113.7	76.9	47.7	58.6	31.2	12.4	17494
NHH17612	UNL-Experimental	78.5	109.8	75.3	50.5	59.2	34.1	13.1	19676
NW15443	UNL-Experimental	77.2	111.8	69.2	50.5	56.7	36.3	13.0	15555
AP Bigfoot (10BC329-17-5)	AgriPro-Syngenta	76.1	115.0	61.8	51.7	57.7	31.8	12.8	20222
LCS Link	Limagrain Cereal Seeds	76.1	110.2	72.4	45.7	57.6	33.6	13.1	17355
LCS Valiant	Limagrain Cereal Seeds	74.6	110.9	70.7	42.3	57.5	30.8	13.2	17118
WB4699	WestBred	74.6	113.7	62.8	47.3	55.4	29.0	12.0	21651
CP7017AX	CROPLAN by WinfieldUnited	74.5	120.2	65.5	37.8	56.8	31.0	12.3	18339
CP7909	CROPLAN by WinfieldUnited	74.4	114.6	60.4	48.3	57.5	32.2	12.0	18829
WB4269	WestBred	73.8	112.4	70.3	38.7	57.3	29.6	12.6	19019
CP7010	CROPLAN by WinfieldUnited	73.7	110.0	73.6	37.4	59.9	29.6	13.0	18437
WB-Grainfield	WestBred	72.8	112.7	61.8	43.7	56.9	33.3	12.3	18589
Overland	Husker Genetics	71.7	107.6	58.7	48.7	57.8	37.0	12.7	18210
Wesley	Husker Genetics	71.4	109.0	63.5	41.8	55.7	32.5	13.7	17162
Ruth	Husker Genetics	71.1	109.9	63.6	39.9	56.9	34.8	12.5	18978
WB4303	WestBred	71.1	121.4	52.4	39.5	54.0	29.8	13.4	18218
CP7050AX	CROPLAN by WinfieldUnited	69.5	101.5	71.1	36.0	58.4	31.0	13.7	18479
PSB13NEDH-14-83W	UNL-Experimental	68.8	98.4	58.8	49.3	56.5	36.0	12.7	18221
LCS Photon AX	Limagrain Cereal Seeds	68.6	97.8	68.7	39.3	58.4	32.3	13.9	18562
Scout 66	Check	68.0	90.0	65.5	48.5	59.0	43.1	13.8	16232
SY Wolverine	AgriPro-Syngenta	65.7	102.4	52.5	42.4	54.9	28.5	12.4	19015
Freeman	Husker Genetics	65.5	110.9	54.3	31.3	54.1	34.3	12.7	18984
Turkey	Check	56.9	81.7	55.0	33.9	57.4	42.3	14.5	18226
<b>Average of all entries</b>		<b>73.6</b>	<b>109.2</b>	<b>67.2</b>	<b>44.2</b>	<b>57.3</b>	<b>33.2</b>	<b>13.0</b>	<b>18194</b>
<b>Standard deviation</b>		<b>5.9</b>	<b>3.0</b>	<b>3.2</b>	<b>3.6</b>	<b>1.5</b>	<b>3.5</b>	<b>0.6</b>	<b>1320</b>
<b>LSD [1]</b>		.	<b>5.0</b>	<b>5.4</b>	<b>6.0</b>	.	.	.	.
<b>Coefficient of variation [2]</b>		.	<b>2.8</b>	<b>4.8</b>	<b>8.2</b>	.	.	.	.

[1] For differences between varieties that are equal to or greater than the LSD value, the chance that the difference is significant is 90%.

[2] Coefficient of Variation (CV) indicates the quality of a trial, and lower than 15 indicates a high quality trial. For CV>15, there was higher than expected variability in the field or the data and the results should be used with caution.

## SOUTH CENTRAL DRYLAND AVERAGE WHEAT PERFORMANCE

Variety	Brand	Grain Yield (bu/a)	Bushel Weight (lb/bu)	Plant Height (inches)	Grain Protein (%)
<b>Two-year (2020-2021) averages</b>					
LCS Link	Limagrain Cereal Seeds	80.4	59.4	33.0	13.2
NW15443	UNL-Experimental	80.0	57.9	35.4	13.1
WB-Grainfield	WestBred	77.1	58.1	32.9	12.6
Overland	Husker Genetics	76.2	58.1	36.6	12.9
Wesley	Husker Genetics	75.7	57.5	32.4	13.6
WB4269	WestBred	75.7	58.7	28.8	12.8
Siege	NuPride Genetics	74.7	60.3	32.0	13.6
CP7017AX	CROPLAN by Winfield United	74.7	57.9	29.8	12.5
LCS Valiant	Limagrain Cereal Seeds	74.5	58.7	30.2	13.8
WB4699	WestBred	74.1	57.0	28.6	12.2
WB4303	WestBred	73.0	55.2	29.4	13.5
CP7010	CROPLAN by WinfieldUnited	70.8	59.3	29.5	13.2
Ruth	Husker Genetics	70.6	58.4	33.2	12.8
CP7909	CROPLAN by Winfield United	68.6	58.4	30.3	12.8
Freeman	Husker Genetics	68.5	55.6	32.9	13.1
CP7050AX	CROPLAN by Winfield United	66.9	58.8	30.3	14.2
SY Wolverine	AgriPro-Syngenta	66.9	57.2	28.0	13.2
Scout 66	Check	60.7	58.0	40.9	14.0
Turkey	Check	59.1	57.7	41.6	14.6
<b>Average of all entries</b>		<b>72.0</b>	<b>58.0</b>	<b>32.4</b>	<b>13.2</b>
<b>Three-year (2019-2021) averages</b>					
WB-Grainfield	WestBred	84.0	57.6	34.3	12.1
NW15443	UNL-Experimental	83.8	57.7	35.8	12.7
LCS Link	Limagrain Cereal Seeds	83.3	59.5	33.8	13.1
Overland	Husker Genetics	82.1	58.0	37.9	12.8
WB4699	WestBred	81.8	57.0	29.3	11.9
LCS Valiant	Limagrain Cereal Seeds	81.6	58.6	31.3	13.5
WB4269	WestBred	81.1	58.4	29.8	12.5
Siege	NuPride Genetics	79.8	59.8	33.5	13.5
WB4303	WestBred	78.1	55.6	29.9	13.4
Ruth	Husker Genetics	77.7	57.8	34.7	12.5
Freeman	Husker Genetics	76.3	55.6	34.1	12.7
CP7909	CROPLAN by Winfield United	73.6	58.4	30.9	12.4
SY Wolverine	AgriPro-Syngenta	72.9	56.5	28.8	13.0
Turkey	Check	61.3	57.8	42.1	14.2
Scout 66	Check	60.9	58.0	41.3	13.8
<b>Average of all entries</b>		<b>79.9</b>	<b>58.0</b>	<b>33.7</b>	<b>12.9</b>



## WEST CENTRAL DRYLAND WHEAT VARIETY TESTS - 2021

### RED WILLOW, LINCOLN, PERKINS, AND KEITH COUNTIES (1/2)

Variety	Brand	Average Yield (bu/a)	Red Willow Yield (bu/a)	Lincoln Yield (bu/a)	Perkins Yield (bu/a)	Bushel Weight (lb/bu)	Plant Height (in)	Grain Protein (%)	Seed Weight (seeds/lb)
AP Bigfoot (10BC329-17-5)	AgriPro-Syngenta	105.6	127.1	79.0	110.7	58.2	34.4	12.5	18315
LCS Atomic AX	Limagrain Cereal Seeds	105.4	130.4	73.7	112.2	58.6	34.4	11.7	16356
WB4792	WestBred	103.1	126.5	79.4	103.4	59.0	36.3	11.7	18640
LCS Link	Limagrain Cereal Seeds	102.9	124.1	78.2	106.4	59.3	37.3	11.7	16145
WB-Grainfield	WestBred	102.3	129.0	75.6	102.2	57.1	36.0	12.5	20195
WB4595	WestBred	102.2	122.3	85.2	99.0	60.4	36.3	11.3	16939
NW13493	UNL-Experimental	101.9	121.0	72.5	112.3	60.0	35.9	12.1	16415
KS Hamilton	Kansas Wheat Alliance	101.7	126.4	77.4	101.3	58.3	34.8	12.2	17948
CP7909	CROPLAN by WinfieldUnited	101.0	125.0	69.9	108.0	57.8	35.3	12.0	19790
NHH17612	UNL-Experimental	101.0	120.6	77.1	105.2	59.8	35.0	12.6	18894
LCS Valiant	Limagrain Cereal Seeds	100.6	119.4	69.7	112.8	58.4	36.1	12.8	16326
Canvas	PlainsGold	100.4	125.4	77.4	98.4	58.7	34.8	11.5	19070
WB4462	WestBred	100.3	127.9	71.5	101.5	58.9	39.1	12.5	16694
AP 18AX	AgriPro-Syngenta	100.1	118.7	77.6	103.9	57.5	37.9	11.8	16993
LCS Helix AX	Limagrain Cereal Seeds	99.9	123.6	72.1	104.0	58.8	36.4	12.2	16936
NE17441	UNL-Experimental	99.9	128.7	66.9	104.1	57.0	34.5	11.9	16742
KS Dallas	Kansas Wheat Alliance	99.9	124.8	71.0	103.8	58.9	35.7	11.8	13951
Whistler	PlainsGold	99.6	119.5	83.0	96.4	56.1	37.6	11.5	20233
Settler CL	NuPride Genetics	99.6	120.5	82.4	95.8	58.1	36.3	12.0	16291
AP Roadrunner	AgriPro-Syngenta	98.2	116.2	78.3	100.3	57.4	35.7	12.2	17342
MS Iceman	Meridian Seeds	98.1	113.9	75.5	104.8	58.6	35.6	12.5	17602
NW15443	UNL-Experimental	97.8	115.4	75.6	102.5	58.4	38.4	11.8	15146
NE15624	UNL-Experimental	97.1	122.3	64.2	104.7	58.9	32.9	12.6	16823
CP7017AX	CROPLAN by WinfieldUnited	97.1	122.7	67.1	101.4	58.4	34.6	11.6	16741
Guardian	PlainsGold	97.0	123.9	80.2	86.9	58.7	35.7	12.3	18843
CP7010	CROPLAN by WinfieldUnited	97.0	115.0	73.1	102.9	61.1	35.6	11.3	16989
WB4418	WestBred	97.0	117.2	68.2	105.6	57.2	34.4	12.7	18939
Ruth	Husker Genetics	96.9	119.8	65.4	105.3	58.7	37.5	12.1	17425
NE17443	UNL-Experimental	96.7	118.7	65.3	106.1	58.8	37.0	12.7	17343
Wesley	Husker Genetics	96.5	120.5	73.9	95.0	57.4	33.4	12.5	14924
PSB13NEDH-14-83W	UNL-Experimental	96.5	116.7	71.2	101.5	57.7	36.7	12.1	16618
NE14696	UNL-Experimental	95.8	111.3	70.6	105.4	57.3	38.6	11.7	18266
MS Maverick	Meridian Seeds	95.1	112.8	72.3	100.3	58.8	35.3	12.3	16869
Robidoux	Husker Genetics	94.9	119.0	67.7	98.1	56.9	36.9	12.8	18379
NHH17450	UNL-Experimental	94.8	120.2	71.8	92.4	57.8	38.1	12.8	18340
Epoch (NE15420)	UNL-Experimental	94.3	111.9	69.5	101.6	58.1	35.6	12.0	16230

TABLE CONTINUED ON NEXT PAGE

## WEST CENTRAL DRYLAND WHEAT VARIETY TESTS - 2021

### RED WILLOW, LINCOLN, PERKINS, AND KEITH COUNTIES (2/2)

Variety	Brand	Average Yield (bu/a)	Red Willow Yield (bu/a)	Lincoln Yield (bu/a)	Perkins Yield (bu/a)	Bushel Weight (lb/bu)	Plant Height (in)	Grain Protein (%)	Seed Weight (seeds/lb)
SY Wolverine	AgriPro-Syngenta	94.3	118.9	58.9	105.1	58.5	34.4	12.6	16662
WB4309	WestBred	93.9	113.4	66.2	102.0	57.9	35.8	12.8	18947
Overland	Husker Genetics	93.8	113.4	68.0	100.1	57.6	38.7	12.3	17527
NE16563V	UNL-Experimental	93.6	112.0	68.0	100.9	57.6	36.7	12.3	18609
LCS Photon AX	Limagrain Cereal Seeds	93.0	112.4	65.5	101.0	59.4	37.8	13.4	17304
Panhandle	Husker Genetics	92.8	114.8	73.9	89.8	57.4	40.9	13.2	18182
Freeman	Husker Genetics	92.0	115.7	63.7	96.6	56.0	36.0	12.4	17223
SY Legend CL2	AgriPro-Syngenta	91.2	113.3	66.4	94.0	58.1	34.8	13.0	15809
NE17544	UNL-Experimental	89.8	107.5	66.6	95.5	58.8	38.5	12.6	17464
CP7050AX	CROPLAN by WinfieldUnited	85.9	96.1	64.1	97.6	60.3	35.9	13.5	16906
Turkey	Check	74.1	91.5	57.8	73.1	57.8	42.7	13.8	17269
Scout 66	Check	71.1	84.8	58.2	70.3	58.4	41.3	13.3	17402
<b>Average of all entries</b>		<b>96.5</b>	<b>117.8</b>	<b>71.4</b>	<b>100.5</b>	<b>58.3</b>	<b>36.4</b>	<b>12.3</b>	<b>17396</b>
<b>Standard deviation</b>		<b>6.4</b>	<b>4.8</b>	<b>4.0</b>	<b>4.5</b>	<b>1.0</b>	<b>2.0</b>	<b>0.6</b>	<b>1289</b>
<b>LSD [1]</b>		.	<b>8.0</b>	<b>6.6</b>	<b>7.5</b>	.	.	.	.
<b>Coefficient of variation [2]</b>		.	<b>4.1</b>	<b>5.6</b>	<b>4.5</b>	.	.	.	.

[1] For differences between varieties that are equal to or greater than the LSD value, the chance that the difference is significant is 90%.

[2] Coefficient of Variation (CV) indicates the quality of a trial, and lower than 15 indicates a high quality trial. For CV>15, there was higher than expected variability in the field or the data and the results should be used with caution.





## WEST CENTRAL DRYLAND AVERAGE WHEAT PERFORMANCE

Variety	Brand	Grain Yield (bu/a)	Bushel Weight (lb/bu)	Plant Height (inches)	Grain Protein (%)
<b>Two-year (2020-2021) averages</b>					
LCS Link	Limagrain Cereal Seeds	75.6	56.1	34.8	11.6
WB4595	WestBred	74.2	57.2	34.1	11.2
WB4792	WestBred	73.9	55.7	33.5	11.6
WB4462	WestBred	73.4	56.7	36.1	12.4
NW13493	UNL-Experimental	72.6	56.9	33.2	11.9
LCS Valiant	Limagrain Cereal Seeds	72.1	56.4	33.6	12.0
CP7010	CROPLAN by WinfieldUnited	72.1	58.3	33.2	11.4
Canvas	PlainsGold	71.8	57.0	32.5	11.2
WB-Grainfield	WestBred	71.8	55.8	34.0	11.9
Settler CL	NuPride Genetics	71.7	57.0	33.7	11.7
NW15443	UNL-Experimental	71.4	56.6	36.1	11.7
KS Dallas	Kansas Wheat Alliance	70.9	56.0	33.3	11.7
AP 18AX	AgriPro-Syngenta	70.3	56.4	34.8	11.7
WB4418	WestBred	69.8	56.4	32.4	12.2
Wesley	Husker Genetics	69.5	56.3	31.7	12.2
CP7017AX	CROPLAN by Winfield United	68.8	56.2	31.9	11.6
Ruth	Husker Genetics	68.4	56.5	34.7	11.8
CP7909	CROPLAN by Winfield United	67.9	56.1	32.8	11.7
NE15624	UNL-Experimental	67.2	56.6	31.3	12.4
Robidoux	Husker Genetics	67.1	55.7	34.8	12.3
SY Wolverine	AgriPro-Syngenta	66.2	57.6	32.3	12.2
Freeman	Husker Genetics	65.9	54.4	33.4	12.1
SY Legend CL2	AgriPro-Syngenta	65.9	56.5	32.2	12.8
CP7050AX	CROPLAN by Winfield United	63.0	57.4	33.4	12.8
Scout 66	Check	52.9	56.0	39.0	12.6
Turkey	Check	52.8	55.9	39.9	13.5
<b>Average of all entries</b>		<b>68.7</b>	<b>56.4</b>	<b>34.0</b>	<b>12.0</b>

TABLE CONTINUED ON NEXT PAGE

## WEST CENTRAL DRYLAND AVERAGE WHEAT PERFORMANCE

Variety	Brand	Grain Yield (bu/a)	Bushel Weight (lb/bu)	Plant Height (inches)	Grain Protein (%)
<b>Three-year (2019-2021) averages</b>					
WB4595	WestBred	81.1	58.4	33.4	11.6
WB4792	WestBred	80.5	56.8	33.6	11.8
NW15443	UNL-Experimental	78.8	57.1	36.2	11.9
LCS Link	Limagrain Cereal Seeds	78.5	57.4	34.6	12.0
LCS Valiant	Limagrain Cereal Seeds	78.0	57.5	32.9	12.4
AP 18AX	AgriPro-Syngenta	78.0	57.1	33.6	11.8
WB4462	WestBred	77.8	57.6	35.3	12.5
WB-Grainfield	WestBred	77.7	56.8	33.6	12.1
Settler CL	NuPride Genetics	77.3	58.0	33.3	11.8
NW13493	UNL-Experimental	76.2	57.7	32.9	12.3
Canvas	PlainsGold	75.7	58.1	31.9	11.5
Robidoux	Husker Genetics	75.1	56.8	33.8	12.3
WB4418	WestBred	74.6	57.1	32.0	12.6
CP7909	CROPLAN by Winfield United	74.4	57.1	31.1	11.9
Ruth	Husker Genetics	73.7	57.5	34.5	12.0
SY Wolverine	AgriPro-Syngenta	73.6	58.4	31.3	12.5
Freeman	Husker Genetics	73.5	55.7	33.1	12.1
SY Legend CL2	AgriPro-Syngenta	73.4	57.3	31.8	12.9
NE15624	UNL-Experimental	72.6	57.6	30.9	12.6
Turkey	Check	60.0	57.1	38.9	13.6
Scout 66	Check	58.8	57.1	38.3	12.9
<b>Average of all entries</b>		<b>75.6</b>	<b>57.3</b>	<b>33.5</b>	<b>12.2</b>





**PANHANDLE (WEST) DRYLAND WHEAT VARIETY TESTS - 2021**  
**DEUEL, CHEYENNE(IM), KIMBALL, BOX BUTTE, AND BANNER COUNTIES (1/2)**

Variety	Brand	Average Yield (bu/a)	Deuel Yield (bu/a)	Cheyenne IM Yield (bu/a)	Kimball Yield (bu/a)	Box Butte Yield (bu/a)	Banner Yield (bu/a)	Bushel Weight (lb/bu)	Plant Height (in)	Grain Protein (%)	Seed Weight (seeds/lb)
Whistler	PlainsGold	78.5	80.0	60.2	93.5	56.6	102.2	59.1	34.9	11.4	17038
AP 18AX	AgriPro-Syngenta	76.6	80.9	59.4	82.6	59.6	100.5	59.5	34.8	11.6	15800
LCS Atomic AX	Limagrain Cereal Seeds	75.8	73.8	57.2	89.0	63.8	94.9	59.6	32.8	11.4	16161
SY Wolverine	AgriPro-Syngenta	74.9	69.1	56.9	97.1	57.3	94.1	60.0	32.1	12.2	17343
WB4309	WestBred	74.9	73.9	58.1	82.4	65.2	94.9	59.6	34.2	12.2	17046
NW13493	UNL-Experimental	74.7	79.0	54.1	86.4	60.5	93.3	59.8	35.1	11.6	16636
NE17441	UNL-Experimental	74.4	69.0	52.2	93.1	61.9	96.1	58.7	33.4	11.9	17006
CP7909	CROPLAN by Winfield United	74.4	75.8	58.0	89.8	61.2	87.3	58.5	33.7	11.6	17588
AP Bigfoot (10BC329-17-5)	AgriPro-Syngenta	74.3	74.4	57.4	86.7	59.2	93.9	59.7	33.8	12.1	19492
Crescent AX	PlainsGold	74.2	76.3	51.0	82.0	69.6	92.2	60.3	34.3	11.5	16704
WB4792	WestBred	74.1	78.7	56.4	80.6	58.0	96.6	60.6	34.5	11.5	17267
AP Roadrunner	AgriPro-Syngenta	74.0	75.7	57.6	82.8	57.5	96.2	60.2	33.1	12.1	17231
KS Hamilton	Kansas Wheat Alliance	73.2	74.0	59.0	80.4	60.8	92.0	59.7	32.0	11.5	16024
MS Maverick	Meridian Seeds	73.0	77.1	52.0	86.7	57.1	92.2	60.4	34.1	11.8	16943
Ruth	Husker Genetics	72.8	74.5	56.5	78.1	56.5	98.7	59.8	34.9	12.4	16599
WB4418	WestBred	72.6	80.8	58.5	77.4	55.2	91.3	58.9	33.8	12.2	18987
Fortify SF	PlainsGold	72.6	78.7	52.4	78.8	61.3	91.6	60.1	34.4	11.7	18852
LCS Link	Limagrain Cereal Seeds	72.6	68.4	63.2	85.3	55.7	90.1	60.0	34.1	12.1	15930
NE15624	UNL-Experimental	72.4	79.1	51.9	78.2	62.9	90.0	60.3	32.7	12.3	17998
CP7017AX	CROPLAN by Winfield United	72.3	77.3	52.4	82.4	58.7	90.7	59.1	32.5	11.8	18673
AP Solid (NP 1300500#49)	AgriPro-Syngenta	71.9	71.8	55.9	89.8	60.4	81.5	61.4	32.4	12.5	16576
WB4462	WestBred	71.6	77.0	61.1	69.2	58.8	91.8	60.1	37.6	12.3	14079
Overland	Husker Genetics	71.4	80.3	52.1	81.4	63.6	79.6	60.1	35.5	11.9	17259
Spur	AgriPro-Syngenta	71.2	70.1	56.4	81.9	53.8	93.6	58.2	32.4	12.3	17267
WB-Grainfield	WestBred	71.1	69.7	55.6	84.6	57.8	87.7	58.7	34.6	12.1	16836
WB4595	WestBred	70.7	71.8	52.6	86.8	55.9	86.3	62.0	33.1	11.9	17352
Guardian	PlainsGold	70.3	80.5	49.2	79.0	54.4	88.3	59.8	34.3	11.8	17533
LCS Helix AX	Limagrain Cereal Seeds	69.7	81.3	47.3	80.4	52.0	87.5	59.8	33.0	11.7	17087
MS Iceman	Meridian Seeds	69.6	70.1	51.6	83.1	57.6	85.5	60.5	32.8	12.7	18701
CP7050AX	CROPLAN by Winfield United	69.5	73.4	52.2	76.3	61.0	84.7	60.9	35.4	12.6	17715
Infinity CL	NuPride Genetics	68.5	73.1	53.3	81.7	51.4	83.3	59.0	35.6	11.9	16275
SY Legend CL2	AgriPro-Syngenta	68.5	70.3	53.1	74.4	54.4	90.4	59.5	32.0	12.7	16735
NE14696	UNL-Experimental	68.4	73.4	46.4	74.3	56.9	91.1	59.9	37.2	12.3	17177
NE17443	UNL-Experimental	68.3	74.4	51.2	74.0	56.3	85.5	60.2	34.9	12.4	16766
CP7010	CROPLAN by Winfield United	68.3	76.5	48.6	77.5	52.7	86.0	61.9	32.6	12.3	17153
Robidoux	Husker Genetics	67.8	71.6	50.1	72.5	53.7	91.1	58.9	34.0	12.3	17478

TABLE CONTINUED ON NEXT PAGE

**PANHANDLE (WEST) DRYLAND WHEAT VARIETY TESTS - 2021**  
**DEUEL, CHEYENNE(IM), KIMBALL, BOX BUTTE, AND BANNER COUNTIES (2/2)**

Variety	Brand	Average Yield (bu/a)	Deuel Yield (bu/a)	Cheyenne IM Yield (bu/a)	Kimball Yield (bu/a)	Box Butte Yield (bu/a)	Banner Yield (bu/a)	Bushel Weight (lb/bu)	Plant Height (in)	Grain Protein (%)	Seed Weight (seeds/lb)
Settler CL	NuPride Genetics	67.8	72.8	55.4	75.2	52.2	83.2	59.3	34.2	12.0	16136
LCS Valiant	Limagrain Cereal Seeds	67.5	69.6	46.3	79.6	59.8	82.3	59.3	33.5	12.5	17723
NE17544	UNL-Experimental	67.5	73.9	51.0	80.4	55.4	76.7	59.2	37.2	12.4	16548
Wesley	Husker Genetics	67.4	71.2	52.6	71.5	57.8	84.0	58.7	32.8	12.6	16526
Freeman	Husker Genetics	66.9	67.8	52.3	77.1	52.3	85.2	57.2	33.8	12.2	17141
NHH17450	UNL-Experimental	66.5	69.1	45.9	75.6	56.3	85.4	59.4	35.4	12.3	18209
LCS Photon AX	Limagrain Cereal Seeds	66.1	69.2	51.9	65.4	61.0	83.1	60.6	35.0	12.5	18030
NHH17612	UNL-Experimental	65.2	71.5	46.8	75.6	53.5	78.7	60.0	33.7	12.8	18978
Panhandle	Husker Genetics	63.1	66.0	45.3	73.4	50.6	80.1	58.1	37.7	13.4	17653
Pronghorn	Husker Genetics	61.5	59.5	46.5	71.5	53.5	76.6	60.8	40.3	12.6	16883
WB4483	WestBred	60.6	65.8	49.7	59.2	49.8	78.4	59.1	33.1	12.4	20008
Goodstreak	Husker Genetics	59.4	67.2	40.3	66.3	45.3	77.8	60.5	40.2	13.3	17009
Scout 66	Check	55.4	61.2	37.0	66.5	43.5	68.9	59.8	41.8	13.0	16330
Turkey	Check	53.2	56.1	38.4	59.9	44.8	66.5	59.2	42.3	13.2	18409
<b>Average of all entries</b>		<b>69.7</b>	<b>72.9</b>	<b>52.4</b>	<b>79.1</b>	<b>56.7</b>	<b>87.6</b>	<b>59.7</b>	<b>34.7</b>	<b>12.2</b>	<b>17258</b>
<b>Standard deviation</b>		<b>5.2</b>	<b>4.7</b>	<b>4.6</b>	<b>7.0</b>	<b>3.1</b>	<b>4.9</b>	<b>0.9</b>	<b>2.4</b>	<b>0.5</b>	<b>1040</b>
<b>LSD [1]</b>		.	<b>7.7</b>	<b>7.7</b>	<b>11.6</b>	<b>5.1</b>	<b>8.1</b>	.	.	.	.
<b>Coefficient of variation [2]</b>		.	<b>6.4</b>	<b>8.9</b>	<b>8.8</b>	<b>5.4</b>	<b>5.6</b>	.	.	.	.

[1] For differences between varieties that are equal to or greater than the LSD value, the chance that the difference is significant is 90%.

[2] Coefficient of Variation (CV) indicates the quality of a trial, and lower than 15 indicates a high quality trial. For CV>15, there was higher than expected variability in the field or the data and the results should be used with caution.





## PANHANDLE DRYLAND AVERAGE WHEAT PERFORMANCE (1/2)

Variety	Brand	Grain Yield (bu/a)	Bushel Weight (lb/bu)	Plant Height (inches)	Grain Protein (%)
<b>Two-year (2020-2021) averages</b>					
Whistler	PlainsGold	62.6	56.0	31.6	12.8
Spur	AgriPro-Syngenta	60.0	55.3	29.9	13.2
AP 18AX	AgriPro-Syngenta	60.0	57.4	31.1	12.3
WB4462	WestBred	59.1	57.8	33.7	13.1
WB4595	WestBred	58.7	59.7	30.4	12.4
LCS Link	Limagrain Cereal Seeds	58.4	57.5	30.9	13.0
CP7017AX	CROPLAN by Winfield United	58.4	57.2	29.6	12.5
WB4418	WestBred	58.1	56.9	30.4	13.1
WB4792	WestBred	58.0	57.7	30.4	12.6
Fortify SF	PlainsGold	57.8	58.0	30.9	12.6
Crescent AX	PlainsGold	57.7	58.3	30.9	12.3
SY Wolverine	AgriPro-Syngenta	57.6	58.0	29.3	13.3
CP7909	CROPLAN by Winfield United	57.2	57.3	29.8	12.3
WB-Grainfield	WestBred	56.8	56.9	31.7	13.0
Ruth	Husker Genetics	56.7	57.4	31.2	13.5
NW13493	UNL-Experimental	56.4	57.1	31.1	12.9
SY Legend CL2	AgriPro-Syngenta	56.1	57.2	30.0	13.6
Wesley	Husker Genetics	56.0	56.5	29.6	13.6
NE15624	UNL-Experimental	56.0	57.8	29.4	13.5
CP7050AX	CROPLAN by Winfield United	55.7	59.1	31.2	13.5
Settler CL	NuPride Genetics	55.6	57.4	30.9	13.0
CP7010	CROPLAN by WinfieldUnited	55.2	59.6	29.5	13.0
LCS Valiant	Limagrain Cereal Seeds	55.0	57.1	30.4	13.4
NE14696	UNL-Experimental	54.4	57.6	33.1	13.3
Robidoux	Husker Genetics	53.5	56.2	30.8	13.5
Freeman	Husker Genetics	52.6	55.3	30.1	13.2
Panhandle	Husker Genetics	52.5	56.3	34.0	14.3
Goodstreak	Husker Genetics	48.3	57.9	35.4	14.1
Pronghorn	Husker Genetics	48.3	58.7	36.0	13.6
Scout 66	Check	43.6	57.5	36.6	13.5
Turkey	Check	42.1	56.9	36.4	14.3
<b>Average of all entries</b>		<b>55.4</b>	<b>57.4</b>	<b>31.5</b>	<b>13.2</b>

TABLE CONTINUED ON NEXT PAGE

## PANHANDLE DRYLAND AVERAGE WHEAT PERFORMANCE (2/2)

Variety	Brand	Grain Yield (bu/a)	Bushel Weight (lb/bu)	Plant Height (inches)	Grain Protein (%)
<b>Three-year (2019-2021) averages</b>					
Whistler	PlainsGold	62.7	55.9	32.6	12.4
AP 18AX	AgriPro-Syngenta	61.8	56.8	32.1	12.1
Spur	AgriPro-Syngenta	61.1	54.8	30.7	12.9
WB4462	WestBred	60.0	57.5	34.4	12.8
WB4418	WestBred	59.8	56.4	30.9	12.8
WB4595	WestBred	59.5	59.3	31.4	12.1
WB4792	WestBred	58.9	57.8	31.8	12.3
Ruth	Husker Genetics	58.7	57.2	32.2	13.1
LCS Link	Limagrain Cereal Seeds	58.7	57.4	31.8	12.8
CP7909	CROPLAN by Winfield United	58.5	57.0	30.3	12.0
Crescent AX	PlainsGold	58.2	57.8	32.0	12.1
WB-Grainfield	WestBred	57.3	56.6	32.2	12.6
NE15624	UNL-Experimental	57.3	57.3	29.9	13.2
SY Wolverine	AgriPro-Syngenta	56.8	57.5	29.9	13.0
SY Legend CL2	AgriPro-Syngenta	56.7	57.0	30.6	13.3
NW13493	UNL-Experimental	56.6	57.2	32.2	12.7
Robidoux	Husker Genetics	56.3	55.9	32.0	13.1
NE14696	UNL-Experimental	56.2	57.2	34.3	12.9
Settler CL	NuPride Genetics	56.1	57.1	31.7	12.7
Freeman	Husker Genetics	55.2	55.0	30.4	12.8
LCS Valiant	Limagrain Cereal Seeds	55.0	56.7	32.0	13.1
Panhandle	Husker Genetics	54.7	56.2	35.5	13.8
Pronghorn	Husker Genetics	51.3	58.3	36.6	13.2
Goodstreak	Husker Genetics	50.2	57.7	36.7	13.6
Scout 66	Check	44.3	57.1	37.1	13.3
Turkey	Check	43.7	56.8	37.8	14.1
<b>Average of all entries</b>		<b>56.8</b>	<b>57.0</b>	<b>32.1</b>	<b>12.8</b>





## WEST IRRIGATED WHEAT VARIETY TEST - 2021

### BOX BUTTE AND CHASE COUNTIES

Variety	Brand	Average Yield (bu/ac)	Box Butte Yield (bu/a)	Chase Yield (bu/a)	Bushel Weight (lb/bu)	Grain Protein (%)	Seed Weight (seeds/lb)
NE17441	UNL Experimental	110.5	152.8	68.3	60.7	12.7	14854
LCS Valiant	Limagrain Cereal Seeds	110.4	150.5	70.3	62.1	12.3	14576
WB4595	WestBred	110.1	144.4	75.7	62.6	11.5	15288
SY Wolverine	AgriPro-Syngenta	110.0	140.8	79.2	61.8	12.2	14325
WB4303	WestBred	108.7	144.7	72.8	59.7	12.2	14509
CP7909	CROPLAN by WinfieldUnited	108.7	145.5	71.9	61.2	11.7	14863
CP7017AX	CROPLAN by WinfieldUnited	107.0	143.1	70.9	61.7	12.1	16377
WB4792	WestBred	106.4	139.5	73.3	61.2	11.5	16088
WB4309	WestBred	106.0	142.3	69.7	60.5	13.7	16825
NHH17612	UNL Experimental	103.1	136.2	70.0	61.8	12.5	16895
Canvas	PlainsGold	102.2	135.6	68.8	62.1	12.1	16746
Epoch (NE15420)	UNL Experimental	101.8	132.6	70.9	60.6	12.7	15769
WB4418	WestBred	101.3	133.3	69.3	60.2	12.6	16877
NHH17450	UNL Experimental	101.1	138.5	63.7	61.4	12.6	15479
CP7010	CROPLAN by WinfieldUnited	100.0	131.5	68.4	61.8	12.2	16616
CP7050AX	CROPLAN by WinfieldUnited	99.2	134.6	63.8	62.1	13.9	15763
Wesley	Husker Genetics	99.2	135.4	62.9	61.1	13.3	14501
Robidoux	Husker Genetics	98.2	124.6	71.8	60.4	13.1	17113
Scout 66	Check	85.2	107.8	62.5	60.6	13.7	14532
Turkey	Check	81.6	103.4	59.7	60.7	14.6	15971
<b>Average of all entries</b>		<b>102.5</b>	<b>135.9</b>	<b>69.2</b>	<b>61.2</b>	<b>12.7</b>	<b>15698</b>
<b>Standard deviation</b>		<b>7.8</b>	<b>4.2</b>	<b>2.5</b>	<b>0.8</b>	<b>0.8</b>	<b>965</b>
<b>LSD [1]</b>		.	<b>7.0</b>	<b>4.3</b>	.	.	.
<b>Coefficient of variation [2]</b>		.	<b>3.1</b>	<b>3.7</b>	.	.	.

[1] For differences between varieties that are equal to or greater than the LSD value, the chance that the difference is significant is 90%.

[2] Coefficient of Variation (CV) indicates the quality of a trial, and lower than 15 indicates a high quality trial. For CV>15, there was higher than expected variability in the field or the data and the results should be used with caution.



## WEST IRRIGATED AVERAGE WHEAT PERFORMANCE

Variety	Brand	Grain Yield (bu/a)	Bushel Weight (lb/bu)	Plant Height (inches)	Grain Protein (%)
<b>Two-year (2020-2021) averages</b>					
WB4595	WestBred	107.1	62.0	28.8	11.8
LCS Valiant	Limagrain Cereal Seeds	106.7	61.4	28.8	12.7
WB4303	WestBred	105.2	58.5	28.5	12.7
Canvas	PlainsGold	104.5	61.6	28.3	12.0
CP7017AX	CROPLAN by Winfield United	104.4	60.9	27.0	11.9
CP7909	CROPLAN by Winfield United	103.4	60.1	30.3	11.9
SY Wolverine	AgriPro-Syngenta	103.3	60.6	29.0	12.0
WB4418	WestBred	101.2	59.5	28.0	12.6
Wesley	Husker Genetics	99.1	60.0	29.3	13.3
Epoch	UNL-Experimental	98.4	59.8	27.0	13.0
CP7010	CROPLAN by WinfieldUnited	98.2	60.8	27.3	12.3
CP7050AX	CROPLAN by Winfield United	98.0	61.3	30.3	13.6
WB4792	WestBred	97.9	60.6	27.8	12.0
Robidoux	Husker Genetics	91.4	59.4	28.8	13.6
Turkey	Check	75.8	58.8	37.8	14.8
Scout 66	Check	73.8	59.2	32.0	13.7
<b>Average of all entries</b>		<b>98.0</b>	<b>59.9</b>	<b>28.9</b>	<b>12.8</b>
<b>Three-year (2019-2021) averages</b>					
WB4595	WestBred	107.0	60.8	30.9	12.0
WB4303	WestBred	106.0	57.2	30.3	13.0
LCS Valiant	Limagrain Cereal Seeds	104.6	60.3	27.4	13.0
WB4418	WestBred	103.3	58.5	30.5	12.9
Epoch	UNL-Experimental	102.6	59.0	29.5	13.1
SY Wolverine	AgriPro-Syngenta	102.6	59.6	29.5	12.4
CP7909	CROPLAN by Winfield United	102.2	59.4	28.6	12.0
Canvas	PlainsGold	101.8	60.2	30.6	12.3
Wesley	Husker Genetics	98.9	58.8	30.1	13.6
WB4792	WestBred	98.0	59.5	30.4	12.3
Robidoux	Husker Genetics	89.3	57.9	27.4	13.7
<b>Average of all entries</b>		<b>98.6</b>	<b>58.9</b>	<b>29.8</b>	<b>13.0</b>



2021 WHEAT GRAIN YIELD\* AT ALL LOCATIONS TESTED (1/2)

Variety	Brand	Saunders	SaundersIM	Lancaster	Jefferson	Clay	Gosper	Red Willow	Lincoln	Perkins	Deuel	CheyenneIM	Kimball	Box Butte RF	Banner	Box Butte IRR	Chase IRR
AP 18AX	AgriPro-Syngenta	.	.	.	115	62	52	119	78	104	81	59	83	60	100	.	.
AP Bigfoot (10BC329-17-5)	AgriPro-Syngenta	.	.	.	.	.	.	127	79	111	74	57	87	59	94	.	.
AP Roadrunner	AgriPro-Syngenta	.	.	.	118	77	50	116	78	100	76	58	83	57	96	.	.
AP Solid (NP 1300500#49)	AgriPro-Syngenta	.	.	.	.	.	.	.	.	.	72	56	90	60	81	.	.
Canvas	PlainsGold	.	.	.	.	.	.	125	77	98	.	.	.	.	.	136	69
CP7010	CROPLAN by WinfieldUnited	.	.	.	110	74	37	115	73	103	77	49	77	53	86	131	68
CP7017AX	CROPLAN by WinfieldUnited	.	.	.	120	66	38	123	67	101	77	52	82	59	91	143	71
CP7050AX	CROPLAN by WinfieldUnited	.	.	.	101	71	36	96	64	98	73	52	76	61	85	135	64
CP7909	CROPLAN by WinfieldUnited	.	.	.	115	60	48	125	70	108	76	58	90	61	87	146	72
Crescent AX	PlainsGold	.	.	.	.	.	.	.	.	.	76	51	82	70	92	.	.
Epoch (NE15420)	UNL-Experimental	.	.	.	.	.	.	112	69	102	.	.	.	.	.	133	71
Fortify SF	PlainsGold	.	.	.	.	.	.	.	.	.	79	52	79	61	92	.	.
Freeman	Husker Genetics	75	76	60	111	54	31	116	64	97	68	52	77	52	85	.	.
Goodstreak	Husker Genetics	.	.	.	.	.	.	.	.	.	67	40	66	45	78	.	.
Guardian	PlainsGold	.	.	.	.	.	.	124	80	87	80	49	79	54	88	.	.
Infinity CL	NuPride Genetics	.	.	.	.	.	.	.	.	.	73	53	82	51	83	.	.
KS Dallas	Kansas Wheat Alliance	.	.	.	.	.	.	125	71	104	.	.	.	.	.	.	.
KS Hamilton	Kansas Wheat Alliance	.	.	.	.	.	.	126	77	101	74	59	80	61	92	.	.
LCS Atomic AX	Limagrain Cereal Seeds	.	.	.	.	.	.	130	74	112	74	57	89	64	95	.	.
LCS Helix AX	Limagrain Cereal Seeds	.	.	.	114	77	48	124	72	104	81	47	80	52	88	.	.
LCS Link	Limagrain Cereal Seeds	.	.	.	110	72	46	124	78	106	68	63	85	56	90	.	.
LCS Photon AX	Limagrain Cereal Seeds	.	.	.	98	69	39	112	65	101	69	52	65	61	83	.	.
LCS Valiant	Limagrain Cereal Seeds	90	96	78	111	71	42	119	70	113	70	46	80	60	82	150	70
MS Iceman	Meridian Seeds	.	.	.	.	.	.	114	76	105	70	52	83	58	86	.	.
MS Maverick	Meridian Seeds	.	.	.	113	76	55	113	72	100	77	52	87	57	92	.	.
NE14696	UNL-Experimental	.	.	.	.	.	.	111	71	105	73	46	74	57	91	.	.
NE15624	UNL-Experimental	.	.	.	.	.	.	122	64	105	79	52	78	63	90	.	.
NE16563V	UNL-Experimental	.	.	.	.	.	.	112	68	101	.	.	.	.	.	.	.
NE17441	UNL-Experimental	75	80	62	.	.	.	129	67	104	69	52	93	62	96	153	68
NE17443	UNL-Experimental	.	.	.	.	.	.	119	65	106	74	51	74	56	86	.	.
NE17544	UNL-Experimental	84	86	56	.	.	.	107	67	95	74	51	80	55	77	.	.
NHH17450	UNL-Experimental	93	92	63	114	77	48	120	72	92	69	46	76	56	85	139	64
NHH17612	UNL-Experimental	94	98	78	110	75	50	121	77	105	72	47	76	53	79	136	70

2021 WHEAT GRAIN YIELD AT ALL LOCATIONS TESTED (2/2)

Variety	Brand	Saunders	SaundersIM	Lancaster	Jefferson	Clay	Gosper	Red Willow	Lincoln	Perkins	Deuel	CheyenneIM	Kimball	Box Butte RF	Banner	Box Butte IRR	Chase IRR
NW13493	UNL-Experimental	.	.	.	.	.	.	121	72	112	79	54	86	61	93	.	.
NW15443	UNL-Experimental	90	100	65	112	69	51	115	76	103	.	.	.	.	.	.	.
Overland	Husker Genetics	85	91	66	108	59	49	113	68	100	80	52	81	64	80	.	.
Panhandle	Husker Genetics	.	.	.	.	.	.	115	74	90	66	45	73	51	80	.	.
Pronghorn	Husker Genetics	.	.	.	.	.	.	.	.	.	60	46	72	54	77	.	.
PSB13NEDH-14-83W	UNL-Experimental	76	82	55	98	59	49	117	71	102	.	.	.	.	.	.	.
Robidoux	Husker Genetics	.	.	.	.	.	.	119	68	98	72	50	73	54	91	125	72
Ruth	Husker Genetics	90	94	68	110	64	40	120	65	105	74	56	78	56	99	.	.
Scout 66	Check	74	68	49	90	65	48	85	58	70	61	37	66	44	69	108	63
Settler CL	NuPride Genetics	.	.	.	.	.	.	121	82	96	73	55	75	52	83	.	.
Siege (NE12561)	NuPride Genetics	93	100	75	111	81	48	.	.	.	.	.	.	.	.	.	.
Spur	AgriPro-Syngenta	.	.	.	.	.	.	.	.	.	70	56	82	54	94	.	.
SY Legend CL2	AgriPro-Syngenta	.	.	.	.	.	.	113	66	94	70	53	74	54	90	.	.
SY Wolverine	AgriPro-Syngenta	.	.	.	102	53	42	119	59	105	69	57	97	57	94	141	79
Turkey	Check	71	65	45	82	55	34	92	58	73	56	38	60	45	67	103	60
WB4269	WestBred	88	95	77	112	70	39	.	.	.	.	.	.	.	.	.	.
WB4303	WestBred	91	91	78	121	52	39	.	.	.	.	.	.	.	.	145	73
WB4309	WestBred	.	.	.	.	.	.	113	66	102	74	58	82	65	95	142	70
WB4401	WestBred	94	104	78	117	88	51	.	.	.	.	.	.	.	.	.	.
WB4418	WestBred	.	.	.	.	.	.	117	68	106	81	59	77	55	91	133	69
WB4462	WestBred	.	.	.	.	.	.	128	71	101	77	61	69	59	92	.	.
WB4483	WestBred	.	.	.	.	.	.	.	.	.	66	50	59	50	78	.	.
WB4595	WestBred	.	.	.	.	.	.	122	85	99	72	53	87	56	86	144	76
WB4699	WestBred	82	95	86	114	63	47	.	.	.	.	.	.	.	.	.	.
WB4792	WestBred	.	.	.	.	.	.	126	79	103	79	56	81	58	97	140	73
WB-Grainfield	WestBred	81	94	59	113	62	44	129	76	102	70	56	85	58	88	.	.
Wesley	Husker Genetics	86	79	55	109	63	42	121	74	95	71	53	71	58	84	135	63
Whistler	PlainsGold	.	.	.	.	.	.	120	83	96	80	60	93	57	102	.	.

\*Yield values corrected to 12% moisture.

2021 WHEAT GRAIN PROTEIN\* AT ALL LOCATIONS TESTED (1/2)

Variety	Brand	Saunders	SaundersIM	Lancaster	Jefferson	Clay	Gosper	Red Willow	Lincoln	Perkins	Deuel	CheyenneIM	Kimball	Box Butte RF	Banner	Box Butte IRR	Chase IRR
AP 18AX	AgriPro-Syngenta	.	.	.	12.3	12.4	13.6	12.3	11.6	11.6	10.1	13.8	9.2	12.6	12.3	.	.
AP Bigfoot (10BC329-17-5)	AgriPro-Syngenta	.	.	.	.	.	.	12.6	12.7	12.3	10.5	13.8	10.3	13.2	12.5	.	.
AP Roadrunner	AgriPro-Syngenta	.	.	.	12.0	13.8	14.2	12.4	12.4	11.7	10.2	14.1	10.5	13.4	12.3	.	.
AP Solid (NP 1300500#49)	AgriPro-Syngenta	.	.	.	.	.	.	.	.	.	11.3	14.1	10.9	13.5	12.8	.	.
Canvas	PlainsGold	.	.	.	.	.	.	12.3	11.0	11.3	.	.	.	.	.	10.9	13.3
CP7010	CROPLAN by WinfieldUnited	.	.	.	12.0	12.8	14.3	11.9	11.0	11.2	11.3	13.9	10.4	13.3	12.6	11.8	12.7
CP7017AX	CROPLAN by WinfieldUnited	.	.	.	11.6	12.1	13.1	11.8	11.4	11.6	10.2	13.7	9.6	13.4	12.1	11.6	12.5
CP7050AX	CROPLAN by WinfieldUnited	.	.	.	13.3	14.2	13.6	13.9	13.3	13.3	11.3	14.4	10.4	13.4	13.3	13.1	14.7
CP7909	CROPLAN by WinfieldUnited	.	.	.	11.7	12.2	12.2	12.2	11.9	11.9	10.4	12.9	8.8	13.9	11.7	10.8	12.7
Crescent AX	PlainsGold	.	.	.	.	.	.	.	.	.	10.1	13.9	9.4	12.2	11.8	.	.
Epoch (NE15420)	UNL-Experimental	.	.	.	.	.	.	12.8	11.3	11.9	.	.	.	.	.	12.0	13.4
Fortify SF	PlainsGold	.	.	.	.	.	.	.	.	.	9.6	13.5	9.7	13.4	12.2	.	.
Freeman	Husker Genetics	11.3	12.5	13.6	12.5	12.3	13.4	12.1	12.3	12.8	10.3	14.1	9.6	14.2	12.7	.	.
Goodstreak	Husker Genetics	.	.	.	.	.	.	.	.	.	10.9	15.8	11.4	14.5	13.8	.	.
Guardian	PlainsGold	.	.	.	.	.	.	12.2	11.9	12.7	9.7	14.5	10.1	13.5	11.4	.	.
Infinity CL	NuPride Genetics	.	.	.	.	.	.	.	.	.	10.7	12.9	9.7	13.9	12.1	.	.
KS Dallas	Kansas Wheat Alliance	.	.	.	.	.	.	12.2	11.6	11.6	.	.	.	.	.	.	.
KS Hamilton	Kansas Wheat Alliance	.	.	.	.	.	.	12.3	11.9	12.2	10.4	13.9	9.0	12.7	11.3	.	.
LCS Atomic AX	Limagrain Cereal Seeds	.	.	.	.	.	.	11.7	11.8	11.6	10.2	13.3	9.6	12.2	11.6	.	.
LCS Helix AX	Limagrain Cereal Seeds	.	.	.	12.2	12.3	12.7	12.1	12.7	11.7	9.4	14.0	10.0	13.1	11.9	.	.
LCS Link	Limagrain Cereal Seeds	.	.	.	12.5	13.3	13.5	12.4	11.1	11.7	11.4	13.6	9.8	13.6	12.4	.	.
LCS Photon AX	Limagrain Cereal Seeds	.	.	.	13.4	14.3	14.1	14.2	13.1	12.8	11.0	14.5	11.2	12.7	13.0	.	.
LCS Valiant	Limagrain Cereal Seeds	12.1	12.7	13.6	12.0	13.4	14.1	12.9	12.9	12.6	11.0	14.9	10.1	14.1	12.4	11.5	13.1
MS Iceman	Meridian Seeds	.	.	.	.	.	.	13.5	11.7	12.4	10.9	15.2	10.4	14.4	12.6	.	.
MS Maverick	Meridian Seeds	.	.	.	13.1	13.7	14.3	12.9	12.0	12.0	10.6	14.7	9.3	13.1	11.6	.	.
NE14696	UNL-Experimental	.	.	.	.	.	.	12.4	10.8	11.8	10.0	14.4	10.3	13.7	13.0	.	.
NE15624	UNL-Experimental	.	.	.	.	.	.	13.2	12.4	12.1	10.9	14.4	10.3	13.4	12.6	.	.
NE16563V	UNL-Experimental	.	.	.	.	.	.	12.5	11.8	12.5	.	.	.	.	.	.	.
NE17441	UNL-Experimental	11.4	11.5	13.3	.	.	.	12.6	11.6	11.7	10.2	14.7	9.6	12.8	12.3	12.2	13.2
NE17443	UNL-Experimental	.	.	.	.	.	.	12.7	13.2	12.1	10.6	14.8	10.1	14.2	12.6	.	.
NE17544	UNL-Experimental	11.8	12.5	13.6	.	.	.	12.5	12.7	12.6	11.1	14.6	10.7	12.9	12.6	.	.
NHH17450	UNL-Experimental	12.4	12.4	13.6	12.3	12.9	13.0	12.9	12.7	12.8	10.3	14.8	10.2	13.5	12.8	11.7	13.5
NHH17612	UNL-Experimental	12.0	12.8	13.4	12.4	13.1	13.9	12.7	12.8	12.3	11.1	14.5	10.6	14.8	13.4	11.7	13.3

2021 WHEAT GRAIN PROTEIN AT ALL LOCATIONS TESTED (2/2)

Variety	Brand	Saunders	SaundersIM	Lancaster	Jefferson	Clay	Gosper	Red Willow	Lincoln	Perkins	Deuel	CheyenneIM	Kimball	Box Butte RF	Banner	Box Butte IRR	Chase IRR
NW13493	UNL-Experimental	.	.	.	.	.	.	12.3	11.8	12.2	10.2	13.7	9.6	12.7	12.1	.	.
NW15443	UNL-Experimental	11.9	12.3	13.1	12.2	13.4	13.3	12.4	11.2	11.9	.	.	.	.	.	.	.
Overland	Husker Genetics	12.1	12.7	13.1	12.7	12.4	13.0	12.6	12.2	12.2	10.1	14.1	10.2	12.6	12.4	.	.
Panhandle	Husker Genetics	.	.	.	.	.	.	14.0	12.2	13.3	11.0	16.3	10.6	15.2	13.7	.	.
Pronghorn	Husker Genetics	.	.	.	.	.	.	.	.	.	11.1	14.8	10.2	13.7	13.2	.	.
PSB13NEDH-14-83W	UNL-Experimental	11.7	12.5	13.1	12.7	12.1	13.3	12.4	11.9	11.9	.	.	.	.	.	.	.
Robidoux	Husker Genetics	.	.	.	.	.	.	12.9	12.2	13.1	10.2	14.3	10.4	13.8	12.9	13.3	12.9
Ruth	Husker Genetics	11.5	11.9	12.8	12.5	12.1	13.0	12.7	12.0	11.4	10.6	13.9	11.0	14.7	11.9	.	.
Scout 66	Check	12.9	13.9	14.3	14.0	14.1	13.3	13.8	12.3	13.7	11.5	15.4	10.3	15.0	12.8	12.9	14.4
Settler CL	NuPride Genetics	.	.	.	.	.	.	12.4	11.5	12.1	10.6	13.5	9.8	13.4	12.8	.	.
Siege (NE12561)	NuPride Genetics	12.8	13.0	13.7	12.5	14.3	13.4	.	.	.	.	.	.	.	.	.	.
Spur	AgriPro-Syngenta	.	.	.	.	.	.	.	.	.	10.2	14.7	9.7	14.2	13.0	.	.
SY Legend CL2	AgriPro-Syngenta	.	.	.	.	.	.	13.1	12.9	13.1	11.2	14.4	9.9	15.1	12.8	.	.
SY Wolverine	AgriPro-Syngenta	.	.	.	12.0	12.3	12.8	12.8	13.0	11.9	10.6	14.7	9.8	13.4	12.4	11.5	13.0
Turkey	Check	12.9	13.7	14.5	14.2	13.9	15.5	13.9	12.9	14.5	11.7	16.1	10.4	14.5	13.2	14.7	14.5
WB4269	WestBred	12.1	12.2	12.5	12.0	12.7	13.0	.	.	.	.	.	.	.	.	.	.
WB4303	WestBred	12.2	12.9	13.8	12.7	13.4	14.0	.	.	.	.	.	.	.	.	11.3	13.2
WB4309	WestBred	.	.	.	.	.	.	12.6	12.8	13.0	10.6	14.9	9.7	13.4	12.6	13.1	14.3
WB4401	WestBred	11.6	11.7	12.2	11.6	12.1	12.4	.	.	.	.	.	.	.	.	.	.
WB4418	WestBred	.	.	.	.	.	.	12.9	12.3	12.8	10.5	14.2	10.4	13.5	12.4	12.0	13.2
WB4462	WestBred	.	.	.	.	.	.	12.9	12.2	12.4	11.1	14.5	9.9	13.8	12.4	.	.
WB4483	WestBred	.	.	.	.	.	.	.	.	.	11.0	15.3	9.9	13.2	12.5	.	.
WB4595	WestBred	.	.	.	.	.	.	11.7	11.0	11.3	11.0	14.6	9.6	12.6	11.7	11.0	12.1
WB4699	WestBred	11.2	11.5	12.9	11.3	12.0	12.7	.	.	.	.	.	.	.	.	.	.
WB4792	WestBred	.	.	.	.	.	.	11.9	11.6	11.5	10.4	13.4	9.5	12.8	11.3	10.6	12.3
WB-Grainfield	WestBred	11.3	11.5	12.4	12.1	12.0	12.9	12.9	11.9	12.7	10.2	14.0	9.9	14.7	11.8	.	.
Wesley	Husker Genetics	12.2	12.9	13.8	13.5	13.3	14.2	12.6	12.5	12.3	10.8	15.0	10.9	13.7	12.8	12.0	14.6
Whistler	PlainsGold	.	.	.	.	.	.	12.2	10.8	11.5	9.5	14.2	9.5	13.1	10.9	.	.

\*Protein corrected to 14% moisture, the correction factor used in analytical standards.



2021 WHEAT BUSHEL WEIGHT AT ALL LOCATIONS TESTED (1/2)

Variety	Brand	Saunders	SaundersIM	Lancaster	Jefferson	Clay	Gosper	Red Willow	Lincoln	Perkins	Deuel	CheyenneIM	Kimball	Box Butte RF	Banner	Box Butte IRR	Chase IRR
AP 18AX	AgriPro-Syngenta	.	.	.	61	56	56	54	59	59	60	60	60	56	61	.	.
AP Bigfoot (10BC329-17-5)	AgriPro-Syngenta	.	.	.	.	.	.	55	60	59	60	60	62	57	59	.	.
AP Roadrunner	AgriPro-Syngenta	.	.	.	61	56	52	53	60	60	61	60	62	56	61	.	.
AP Solid (NP 1300500#49)	AgriPro-Syngenta	.	.	.	.	.	.	.	.	.	63	61	61	59	62	.	.
Canvas	PlainsGold	.	.	.	.	.	.	56	61	59	.	.	.	.	.	62	62
CP7010	CROPLAN by WinfieldUnited	.	.	.	63	61	55	58	62	63	63	62	63	60	62	60	63
CP7017AX	CROPLAN by WinfieldUnited	.	.	.	60	58	52	56	60	59	60	58	62	55	60	62	61
CP7050AX	CROPLAN by WinfieldUnited	.	.	.	62	60	53	58	62	61	62	60	63	59	61	62	62
CP7909	CROPLAN by WinfieldUnited	.	.	.	61	57	54	55	60	58	59	58	60	55	59	61	61
Crescent AX	PlainsGold	.	.	.	.	.	.	.	.	.	61	60	62	58	61	.	.
Epoch (NE15420)	UNL-Experimental	.	.	.	.	.	.	55	60	59	.	.	.	.	.	60	61
Fortify SF	PlainsGold	.	.	.	.	.	.	.	.	.	61	60	61	58	60	.	.
Freeman	Husker Genetics	56	55	51	58	53	51	54	58	56	58	58	60	52	58	.	.
Goodstreak	Husker Genetics	.	.	.	.	.	.	.	.	.	62	59	62	59	61	.	.
Guardian	PlainsGold	.	.	.	.	.	.	57	60	59	62	59	62	55	60	.	.
Infinity CL	NuPride Genetics	.	.	.	.	.	.	.	.	.	62	60	61	53	59	.	.
KS Dallas	Kansas Wheat Alliance	.	.	.	.	.	.	56	61	60	.	.	.	.	.	.	.
KS Hamilton	Kansas Wheat Alliance	.	.	.	.	.	.	54	61	59	61	59	62	56	61	.	.
LCS Atomic AX	Limagrain Cereal Seeds	.	.	.	.	.	.	56	61	59	60	59	62	57	61	.	.
LCS Helix AX	Limagrain Cereal Seeds	.	.	.	62	60	54	56	61	59	62	59	61	56	60	.	.
LCS Link	Limagrain Cereal Seeds	.	.	.	61	58	54	56	61	61	60	61	62	55	61	.	.
LCS Photon AX	Limagrain Cereal Seeds	.	.	.	61	60	54	57	61	61	62	60	61	59	60	.	.
LCS Valiant	Limagrain Cereal Seeds	59	59	57	61	59	52	56	60	59	61	59	62	55	60	62	62
MS Iceman	Meridian Seeds	.	.	.	.	.	.	56	61	60	62	60	62	56	61	.	.
MS Maverick	Meridian Seeds	.	.	.	61	57	56	55	62	60	62	59	63	57	62	.	.
NE14696	UNL-Experimental	.	.	.	.	.	.	54	59	59	61	59	61	58	60	.	.
NE15624	UNL-Experimental	.	.	.	.	.	.	58	60	59	61	60	62	58	61	.	.
NE16563V	UNL-Experimental	.	.	.	.	.	.	56	58	58	.	.	.	.	.	.	.
NE17441	UNL-Experimental	56	58	51	.	.	.	55	59	57	59	58	61	55	60	60	61
NE17443	UNL-Experimental	.	.	.	.	.	.	57	60	59	62	60	63	56	61	.	.
NE17544	UNL-Experimental	59	58	55	.	.	.	57	61	58	61	58	62	55	59	.	.
NHH17450	UNL-Experimental	59	59	56	60	58	54	55	60	58	60	59	62	56	60	62	61
NHH17612	UNL-Experimental	59	60	57	61	60	56	57	61	61	62	60	61	57	60	62	62

2021 WHEAT BUSHEL WEIGHT AT ALL LOCATIONS TESTED (2/2)

Variety	Brand	Saunders	SaundersIM	Lancaster	Jefferson	Clay	Gosper	Red Willow	Lincoln	Perkins	Deuel	CheyenneIM	Kimball	Box Butte RF	Banner	Box Butte IRR	Chase IRR
NW13493	UNL-Experimental	.	.	.	.	.	.	57	62	61	62	59	61	57	61	.	.
NW15443	UNL-Experimental	58	58	56	60	57	54	57	59	59	.	.	.	.	.	.	.
Overland	Husker Genetics	58	58	54	61	57	55	54	60	59	62	60	61	58	60	.	.
Panhandle	Husker Genetics	.	.	.	.	.	.	56	59	57	60	57	61	53	59	.	.
Pronghorn	Husker Genetics	.	.	.	.	.	.	.	.	.	61	60	62	59	62	.	.
PSB13NEDH-14-83W	UNL-Experimental	56	57	54	59	56	54	55	59	59	.	.	.	.	.	.	.
Robidoux	Husker Genetics	.	.	.	.	.	.	53	60	57	60	59	62	54	59	60	61
Ruth	Husker Genetics	58	57	58	61	57	54	56	60	60	61	60	61	55	61	.	.
Scout 66	Check	59	59	56	61	60	56	56	60	59	61	59	62	56	61	62	60
Settler CL	NuPride Genetics	.	.	.	.	.	.	54	61	59	61	60	61	55	60	.	.
Siege (NE12561)	NuPride Genetics	60	61	57	62	60	57	.	.	.	.	.	.	.	.	.	.
Spur	AgriPro-Syngenta	.	.	.	.	.	.	.	.	.	60	57	60	54	60	.	.
SY Legend CL2	AgriPro-Syngenta	.	.	.	.	.	.	55	61	58	60	59	63	55	61	.	.
SY Wolverine	AgriPro-Syngenta	.	.	.	61	52	52	55	60	60	61	59	63	56	61	62	61
Turkey	Check	58	58	53	61	57	54	56	59	58	60	58	61	56	60	60	61
WB4269	WestBred	58	58	56	60	59	53	.	.	.	.	.	.	.	.	.	.
WB4303	WestBred	56	57	54	59	53	50	.	.	.	.	.	.	.	.	61	59
WB4309	WestBred	.	.	.	.	.	.	56	60	58	61	59	62	56	60	60	61
WB4401	WestBred	57	57	55	61	60	54	.	.	.	.	.	.	.	.	.	.
WB4418	WestBred	.	.	.	.	.	.	55	59	57	61	59	60	55	60	59	61
WB4462	WestBred	.	.	.	.	.	.	57	60	59	62	60	62	56	62	.	.
WB4483	WestBred	.	.	.	.	.	.	.	.	.	59	59	62	56	61	.	.
WB4595	WestBred	.	.	.	.	.	.	57	62	62	63	61	63	60	63	62	63
WB4699	WestBred	56	57	55	60	54	52	.	.	.	.	.	.	.	.	.	.
WB4792	WestBred	.	.	.	.	.	.	56	61	60	63	60	61	57	63	61	62
WB-Grainfield	WestBred	58	58	54	61	57	53	54	60	57	60	59	61	54	60	.	.
Wesley	Husker Genetics	56	56	52	60	55	52	56	60	56	60	58	61	55	59	61	61
Whistler	PlainsGold	.	.	.	.	.	.	54	59	56	61	59	61	54	61	.	.

## CHEYENNE COUNTY SAWFLY RATINGS WINTER WHEAT VARIETY TRIAL - 2021

Variety	Brand	Sawfly Rating [1] (1=little lodging, 9=severe lodging)	Average Rating 2020, 2021
AP Solid (NP 1300500 #49)	AgriPro-Syngenta	2.7	-
Spur	AgriPro-Syngenta	3.0	2.4
WB4418	WestBred	3.0	3.6
Ruth	Husker Genetics	3.4	3.4
WB4483	WestBred	3.5	-
Wesley	Husker Genetics	3.5	2.5
Fortify SF	PlainsGold	3.6	2.3
Freeman	Husker Genetics	3.6	3.2
KS Hamilton	Kansas Wheat Alliance	3.6	-
Overland	Husker Genetics	3.7	-
SY Legend CL2	AgriPro-Syngenta	3.7	4.1
LCS Helix AX	Limagrain Cereal Seeds	3.7	-
WB4792	WestBred	3.8	2.8
WB4309	WestBred	3.9	-
CP7010	CROPLAN by WinfieldUnited	4.0	3.1
NE17443	UNL-Experimental	4.1	-
Settler CL	NuPride Genetics	4.1	3.8
LCS Link	Limagrain Cereal Seeds	4.3	4.6
NW13493	UNL-Experimental	4.4	3.9
LCS Photon AX	Limagrain Cereal Seeds	4.4	-
MS Iceman	Meridian Seeds	4.4	-
AP 18AX	AgriPro-Syngenta	4.4	4.5
Pronghorn	Husker Genetics	4.4	-
NE15624	UNL-Experimental	4.5	4.0
Infinity CL	NuPride Genetics	4.5	-
Panhandle	Husker Genetics	4.5	4.3
WB4462	WestBred	4.5	-
NE17544	UNL-Experimental	4.5	-
AP Bigfoot (10BC329-17-5)	AgriPro-Syngenta	4.6	-
WB4595	WestBred	4.6	3.6
CP7017AX	CROPLAN by WinfieldUnited	4.6	4.6
Whistler	PlainsGold	4.7	-
NE17441	UNL-Experimental	4.8	-
MS Maverick	Meridian Seeds	4.8	-
CP7050AX	CROPLAN by WinfieldUnited	4.9	-
AP Roadrunner	AgriPro-Syngenta	4.9	-
Crescent AX	PlainsGold	5.0	4.6
NHH17612	UNL-Experimental	5.0	-

TABLE CONTINUED ON NEXT PAGE

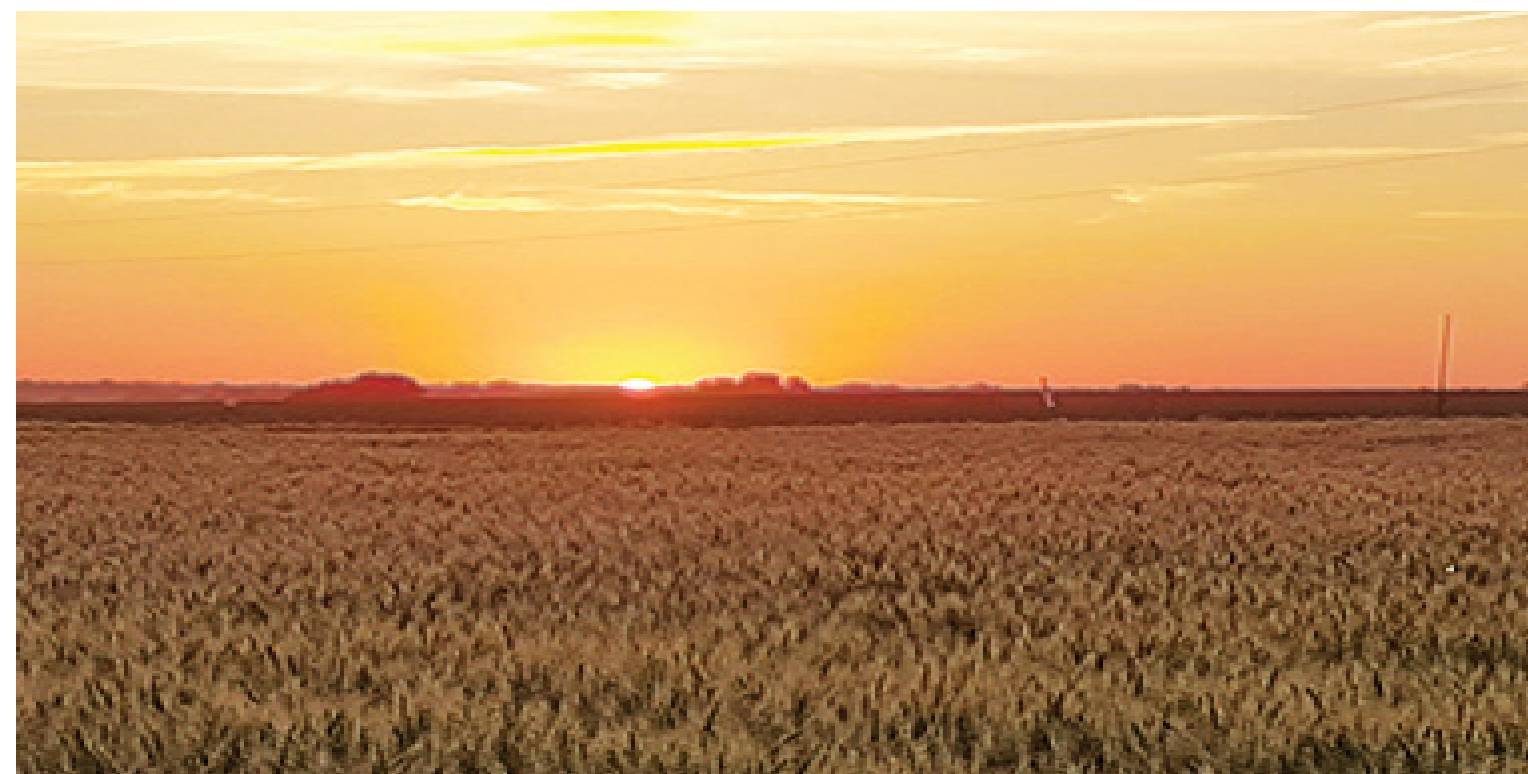
## CHEYENNE COUNTY SAWFLY RATINGS WINTER WHEAT VARIETY TRIAL - 2021 (continued)

Variety	Brand	Sawfly Rating [1] (1=little lodging, 9=severe lodging)	Average Rating 2020, 2021
SY Wolverine	AgriPro-Syngenta	5.1	5.4
Guardian	PlainsGold	5.1	5.0
WB-Grainfield	WestBred	5.1	5.2
Turkey	Check	5.1	4.1
CP7909	CROPLAN by WinfieldUnited	5.2	5.7
NE14696	UNL-Experimental	5.2	-
Goodstreak	Husker Genetics	5.4	4.5
Robidoux	Husker Genetics	5.5	4.9
LCS Valiant	Limagrain Cereal Seeds	5.6	5.2
NHH17450	UNL-Experimental	5.6	-
LCS Atomic AX	Limagrain Cereal Seeds	5.7	-
Scout 66	Check	5.7	5.7
<b>Average of all entries[2]</b>		<b>4.4</b>	<b>4.1</b>
<b>Standard error</b>		<b>0.7</b>	-
<b>LSD[3]</b>		<b>1.1</b>	-

[1] Ratings were conducted no more than 1 week before harvest using a 1-9 scale of sawfly-induced lodging. Names were masked during the rating process to reduce bias. Two-year averages include data collected in 2020 for varieties tested in both years. This data is meant to provide guidance in variety selection but may not reflect absolute sawfly impacts on the varieties. (1=standing/unaffected by sawfly, 9=lodged/extremely damaged)

[2] Mean performance of all entries in the trial.

[3] For differences between varieties that are equal to or greater than the LSD value, the chance that the difference is significant is 90%.





## 2021 WINTER TRITICALE VARIETY TRIALS MEAD, LINCOLN, AND SIDNEY, NE

Entry Name	Grain Yield (lbs/ac)			Test Weight (lbs/bu)	Flowering Date (days from Jan. 1)	Plant Height (in)	Dry Forage Yield (lb/a)
	Average	Mead	Sidney	Mead	Average	Average	Mead
	NT20429	4671	5880	3461	49.0	143.2	49.5
NT20432	4599	5489	3708	49.0	143.5	51.3	7737
NT20413	4580	5572	3588	52.1	140.9	50.9	7214
NT20401	4565	5266	3863	49.9	139.0	47.2	8493
NE03T416-1	4546	5951	3140	49.0	144.1	50.1	7673
NT20426	4449	5412	3485	51.2	141.4	51.7	7851
NT20427	4428	5186	3669	49.1	141.3	53.3	8088
NE03T416-3	4409	5017	3800	49.1	144.0	47.6	7867
NT20409	4400	5528	3272	51.8	140.8	52.9	8030
NT20403	4357	5380	3333	49.8	139.5	47.2	8312
NT12404-1	4335	5308	3361	51.9	140.5	49.4	7589
NT20417	4272	5500	3044	51.6	141.4	53.9	8376
NT19441	4195	5286	3103	54.4	144.5	63.0	8063
NT19443	4140	4875	3404	51.9	144.4	51.4	8050
NT14407	4088	4722	3454	51.9	141.7	54.9	7090
NT19406	4083	4725	3440	53.0	144.3	48.1	7501
NT17441	4066	4804	3328	52.6	145.1	59.2	8595
NT20419	4025	4785	3264	44.9	143.4	45.9	8006
NT18410	3976	4929	3023	49.7	142.3	49.9	7636
NT441	3968	4301	3634	52.4	145.5	56.5	7633
NT15406	3962	4829	3095	52.6	140.3	51.8	8005
NT18430	3905	5000	2809	54.3	144.9	57.0	7514
NT17442	3829	4438	3219	54.6	145.5	58.6	8212
NT20428	3776	4341	3211	53.1	144.5	57.5	8401
NT19410	3760	3654	3865	48.4	143.8	52.8	7813
NT20443	3671	3713	3629	43.9	144.8	45.5	6354
NT20437	3653	4410	2895	50.7	144.5	57.7	8000
NT14433	3309	3865	2753	52.2	144.6	58.9	8789
OVERLAND	3305	4381	2228	57.7	142.8	42.7	6246
NT20438	3257	4223	2290	51.2	145.0	56.8	8285
<b>Average all entries[1]</b>	<b>4086</b>	<b>4892</b>	<b>3279</b>	<b>51.1</b>	<b>143.1</b>	<b>52.4</b>	<b>7851</b>
<b>Least Significant Difference (5%)[2]</b>	.	<b>1014</b>	<b>558</b>	<b>1.3</b>	.	.	<b>1038</b>
<b>CV[3]</b>	.	<b>12.7</b>	<b>10.3</b>	<b>1.5</b>	.	.	<b>9.4</b>

[1] Mean performance of all entries in the trial.

[2] For differences between varieties that are equal to or greater than the LSD value, the chance that the difference is significant is 95%.

[3] Coefficient of Variation (CV) indicates the quality of a trial, and lower than 15 indicates a high quality trial. For CV>15, there was higher than expected variability in the field or the data and the results should be used with caution.

## WINTER TRITICALE VARIETY TRIALS 2019-2021 MEAD, LINCOLN, AND SIDNEY, NE

Entry Name	Grain Yield (lbs/ac)				Test Weight (lbs/bu)	Flowering Date (days from Jan. 1)	Plant Height (in)	Forage Dry Matter (%)	Dry Forage Yield (lb/a)
	State Average	Mead	Lincoln	Sidney					
	<b>Three-year averages</b>								
NT12404-1	3956	4143	4153	3301	51.9	145.6	46.6	25	4870
NE03T416-1	3954	4469	3620	3392	49.0	148.0	45.8	24	4759
NE03T416-3	3919	3933	3521	3690	49.1	148.4	44.4	22	5019
NT14407	3845	3945	3884	3374	51.9	145.6	50.3	24	4730
NT18410	3698	3953	3955	3004	49.7	146.7	46.6	24	4915
NT15406	3628	3626	4175	2777	52.6	144.9	46.1	27	4951
NT17441	3570	3942	3318	3154	52.6	149.4	55.0	23	5727
NT17442	3530	3627	3793	2972	54.6	149.0	54.7	22	5427
NT18430	3402	4060	3698	2566	54.3	148.9	53.7	23	4891
NT14433	3178	3245	3603	2516	52.2	148.2	56.1	24	5676
NT441	3082	3290	2376	3129	52.4	149.7	55.5	22	5164
OVERLAND	3063	3405	3127	2567	57.7	148.1	38.6	24	3939
<b>Average all entries</b>	<b>3569</b>	<b>3803</b>	<b>3602</b>	<b>3037</b>	<b>52.3</b>	<b>147.7</b>	<b>49.4</b>	<b>24</b>	<b>5006</b>









## UNIVERSITY OF NEBRASKA VARIETY TESTING PROGRAM

<http://cropwatch.unl.edu/varietytest>

### **PROVIDED BY**

University of Nebraska-Lincoln Extension  
Institute of Agriculture and Natural Resources  
Department of Agronomy & Horticulture

Extension is a Division of the Institute of Agriculture and Natural Resources at the University of Nebraska–Lincoln cooperating with the Counties and the United States Department of Agriculture.

University of Nebraska–Lincoln Extension educational programs abide with the nondiscrimination policies of the University of Nebraska–Lincoln and the United States Department of Agriculture.

© 2021 University of Nebraska Board of Regents. All rights reserved.

UNIVERSITY OF  
**Nebraska**  
Lincoln