

2017 FALL SEED GUIDE

Brought to you by the
University of Nebraska Variety
Testing Program

- University of Nebraska–Lincoln Extension
- Institute of Agriculture and Natural Resources
- Department of Agronomy & Horticulture

WELCOME TO THE 2017 FALL SEED GUIDE

Crops included in this guide are winter wheat, winter barley, and triticale. The data and other information this guide is based on can also be found at the University of Nebraska Variety Testing web site: <http://cropwatch.unl.edu/varietytest>. Additional wheat variety information may be found at the wheat variety virtual tour web site: <http://cropwatch.unl.edu/wheat/virtual> or the wheat crop web site: <http://cropwatch.unl.edu/wheat>.

The overall winter wheat growing conditions for the past season were very good. Precipitation was greater than in previous years and rainfall was distributed evenly throughout the season except in some instances. There was a surprise late (April, 30) storm with heavy snow that blanketed the western part of the state. The heavy snow matted down some of the fields but the crop generally recovered except for some tip burning and with few exception did actual freeze injury observed later at heading. The storm didn't significantly affect the overall health of the crop rather the snow/rain was helpful in releasing moisture stress for some locations.

Farmers sprayed fungicide for leaf disease at most locations. Spraying for disease along with relatively good moisture condition during grain filling resulted in some good wheat across the state. However, incidence of growers cutting and baling their wheat due to severe disease damage was also reported elsewhere.

For most variety testing sites, cooperating farmers used more inputs (fertilizer, herbicide, fungicides) compared to earlier years. The favorable growing conditions and increased management inputs (at least for test locations) may have resulted in record-high yield reports for most state variety testing locations. As expected, increased input may have predisposed some varieties to lodging. The lodging at some other locations could also be attributed to shallow depth of planting from dry planting conditions in the west. Crop emergence was reported poor to average for most of the sites in the west as well.

Yield and quality parameters were very good for all of the test plots compared to earlier years. Harvesting was however, complicated at some locations by late season storms and hail. All plots were harvested except the irrigated trial in Box Butte County. The plot results from the trial in Furnas County were discarded due to inconsistency probably resulting from early season hail damage.

I hope you will find this seed guide helpful in selecting winter wheat varieties for your wheat operation or use the data to advise your clientele in choosing the right variety to grow.

- Teshome Regassa, Ph. D.



UNL EXTENSION CIRCULAR 103

FALL SEED GUIDE

- August 2017 -

AUTHORS

Teshome Regassa.....Department of Agronomy/Horticulture; Lincoln
P. Stephen Baenziger.....Department of Agronomy/Horticulture; Lincoln
Rodrigo Werle.....West Central Research and Extension Center; North Platte
Dipak Santra.....Department of Agronomy/Horticulture; Scottsbluff

ACKNOWLEDGMENTS

This circular is a progress report of variety trials conducted by personnel of the Agronomy Department, West Central, and Panhandle Research and Extension Centers and their associated agricultural laboratories. Conduct of experiments and publication of results is a joint effort of the Agricultural Research Division and the Cooperative Extension Service. Tests were supported in part by fees paid by commercial seed companies and a partial funding from the Nebraska Wheat Board.

Special acknowledgment is made to farmer cooperators who furnished land for the experiments; also to Extension Educators and others who assisted with the tests. The authors wish to acknowledge the assistance of the technical support staff: Brian Maust, Greg Dorn, Vern Florke, Mitch Montgomery, and Liberty Daniels. Their help is vital to this research.

We would like to thank the Nebraska Wheat Board for contributing wheat check-off money and the Nebraska Agricultural Statistics Service for compiling data on varieties and production of wheat.

This circular reports data from winter wheat trials conducted throughout the State of Nebraska. Entries include commercial varieties and promising experimental lines from Nebraska, surrounding states, and private seed company breeders. The state has been divided into four districts for the purposes of variety testing (Panhandle, West Central, South Central, and Southeast).

There were 16 trials planted across Nebraska in the fall of 2016. Data from the Furnas Rainfed site was not collected due to hail damage. Box Butte County irrigated trial near Hemingford was not harvested due to complications of machinery and rain. Names of cooperators, trial locations, planting dates, harvest dates, highest location mean yield, and mean of top five varieties are shown in Table A. Location specific information such as soil type, tillage, previous crop, and fertilizer applications when available are shown in Table B. Plot sizes varied with location. Four to six row wide and 20 to 35 feet long plots were planted across locations. All tests were direct combined. Entries were replicated 3 to 6 times.

Protein and seed size data were collected from two replicates at each location. The protein data was combined within each district and reported in the district tables. Protein was determined from whole grain using a Perten DA 7250 Near Infrared Spectrometer. Please refer to the Variety Test Home Page for individual site yields, disease score, and other relevant information.

WINTER WHEAT PERFORMANCE

According to the National Agricultural Statistics Service, winter wheat was sown on 1.1 million acres. 1.0 million acres were harvested producing a projected 46 million bushels of grain. The average winter wheat yield of Nebraska for all wheat harvested during the summer of 2017 was projected to be 46 bushels per acre (bu/a). Winter wheat yields and production from the previous 10 years are reported below.

Average Nebraska Winter Wheat Yield (all practices)

Year	2008	2009	2010	2011	2012	2013	2014	2015	2016	2017
Yield (bu/a)	44	48	43	44	42	35	49	42	50	46
NE Total Production (million bu)	73.48	76.8	64.07	65.25	55.44	41.76	71.05	54.6	60	46

Source: National Agricultural Statistics Service (<http://www.nass.usda.gov>)

Yielding ability of different varieties cannot be measured with absolute accuracy because of variations in local disease incidence, soil fertility, seasonal rainfall or moisture, and other factors. For this reason, small differences in yield have no significance. Unless the difference in yield of two varieties is greater than the difference required for significance shown in the tables, little confidence can be placed in the superiority of one variety over the other for measured traits in that particular test. These differences are shown at the 5% level, meaning that differences as large or larger could be expected through chance alone in 1 of 20 trials (5%). Even though two varieties are not statistically different, there may be other factors which influence the choice of one over the other. Factors such as disease resistance, grain quality, agronomic desirability or availability of seed may influence that decision.

Complementary varieties are important when selecting additional varieties to grow. One definition of complementary varieties is that they come from diverse parentages. A more in depth discussion of variety complementation is found in the Crop Improvement section. In order to help select varieties with diverse parentages, the related families of many varieties are included in the characteristics chart.

RESULTS AT INDIVIDUAL LOCATIONS

Southeast:

There were five rainfed trials conducted in the Southeast District in Saunders, Lancaster, Clay, Jefferson, and Washington counties. Site specific management and previous crops are shown in Table B.

- The Jefferson County Rainfed trial was planted on October 18th into soybean stubble. 100 lb/ac N as 28-0-0 and 17 lb/ac S as Thiosol were applied in March. 0.75 oz/ac Harmony Extra SG herbicide and 4 oz/ac Bumper fungicide were broadcast on in late March before jointing, while 1 gal/ac N-Cline fertilizer and 14 oz/ac Quilt XL fungicide were aerially applied at flag leaf, and 8.2 oz/ac Prosaro fungicide was applied at full heading. Plots were harvested on July 10th with a top yield of 126 bu/ac and an average yield of 108 bu/ac. The Saunders County Rainfed trial was planted on October 5th, previous crop was oats. A total of 80 lb UAN was applied. Plots were harvested on July 1st with a top yield of 92 bu/ac and an average yield of 71 bu/ac. 0.4 oz/ac Finesse herbicide was applied.
- The Saunders County Rainfed trial was planted on October 18th, where the previous crop was oats. A total of 80 lb/ac N was applied. Plots were harvested on July 11th with a top yield of 105 bu/ac and an average yield of 87 bu/ac. 0.33 oz/ac Finesse herbicide was applied. The Clay County Rainfed trial was planted on September 18th. Plots were planted September 18th and harvested on July 13th with a top yield of 68 bu/ac and an average yield of 44 bu/ac. A total of 60 lb/ac 11-52-0 was applied as a starter and 50 lbs/ac N was applied as top-dress in the spring.
- The Lancaster County Rainfed trial was planted on September 29th into ground previously planted in oats. 60 lb/ac dry N was applied in Sept & 80 lb/ac liquid N in March. Plots were harvested on July 7th with a top yield of 121 bu/ac and an average yield of 93 bu/ac. Prowl H2O + 2, 4-D herbicide was applied for weed control.
- The Washington County Rainfed trial was planted on October 11th into soybean stubble. 100 lb/ac N, 60 lb/ac K20, 45 lb/ac Cl, and 15 lb/ac S were top-dressed prior to jointing. Plots were harvested on July 17th with a top yield of 140 bu/ac and an average yield of 111 bu/ac. 6.5 oz/ac Prosario was applied at Feekes 10.5.1.

South-Central:

- The Clay County Rainfed trial was planted on September 22nd and harvested on July 18th with a top yield of 85 bu/ac and an average yield of 72 bu/ac. A total of 60 lb/ac 11-52-0 was applied as a starter fertilizer.

West Central:

Six locations were planted in the West Central District. One irrigated trial was planted in Chase County. Rainfed trials were planted in Red Willow, Furnas, Keith, Lincoln, and Perkins counties. Furnas plots were not harvested due to hail damage. Most rainfed sites were left fallow during the previous growing season with corn as the crop before (Table B).

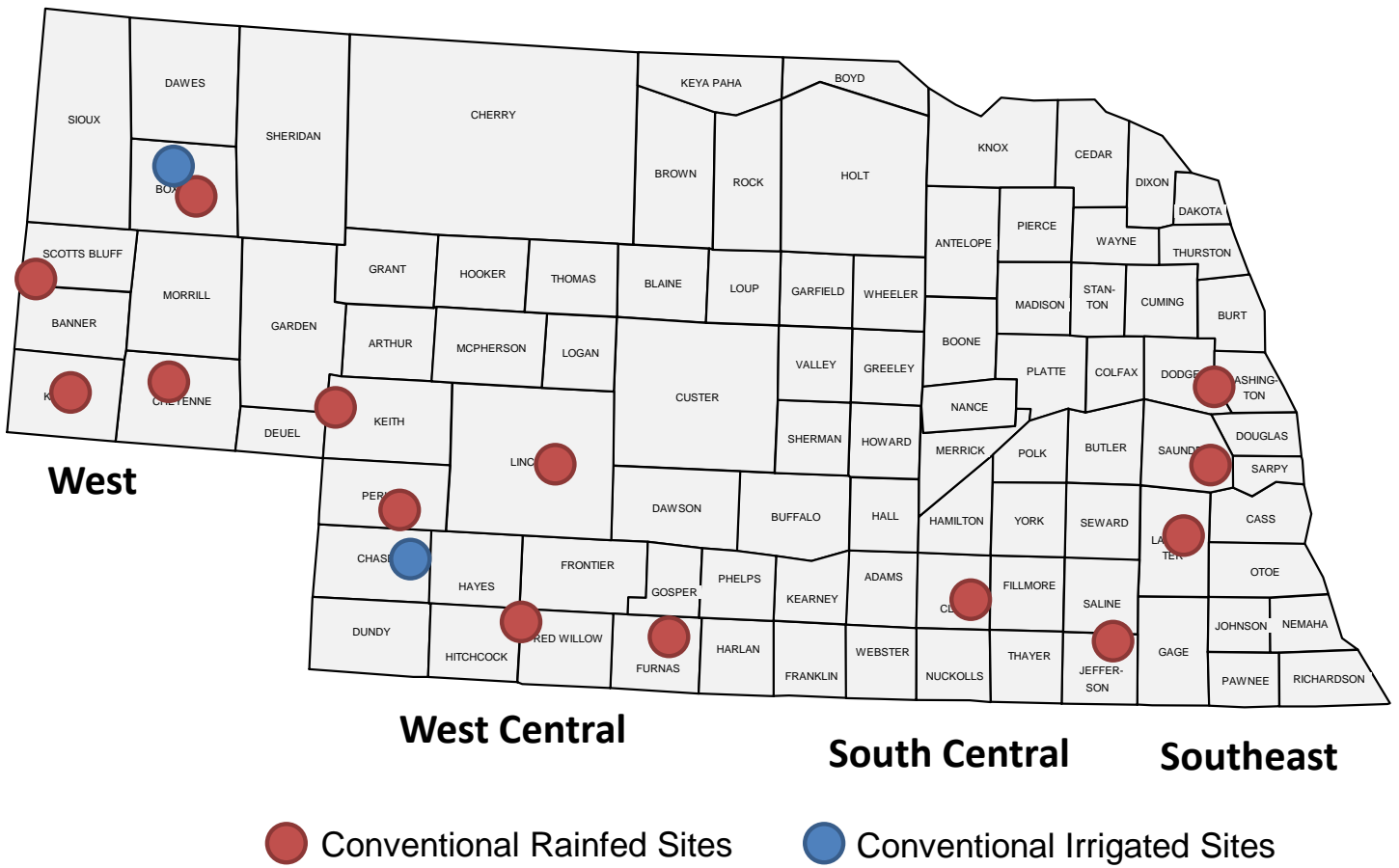
- The Chase County Irrigated trial was planted on October 14th into ground previously cropped in potatoes. Plots were harvested on July 12th with a top yield of 123 bu/ac and an average yield of 98 bu/ac.
- The Keith County Rainfed trial was planted on September 20th into no-till fallow ground. 5 gal/ac of 10-34-0 fertilizer was applied. Plots were harvested on July 13th with a top yield of 81 bu/ac and an average yield of 69 bu/ac.
- The Red Willow County Rainfed trial was planted on September 22nd into no-till fallow ground. Plots were harvested on July 11th with a top yield of 108 bu/ac and an average yield of 71 bu/ac. 0.35 oz/ac of Amber + Banvel herbicide was applied for weed control.
- The Lincoln County Rainfed trial was planted on September 20th into no-till fallow ground. 60 lb/ac of 32-0-0 fertilizer was applied. Plots were harvested on July 8th with a top yield of 76 bu/ac and an average yield of 61 bu/ac. Amber herbicide at 0.35 oz/ac and 4.0 oz/ac Tebucur (Stripe Rust) were also applied.
- The Perkins County Rainfed trial was planted on September 23rd into no-till fallow ground with 70 lb/ac of N applied in the spring in the form of 32-0-0. Plots were harvested July 14th with a top yield of 60 bu/ac and an average yield of 43 bu/ac. Also 6.88 oz/ac PowerFlex + 8 oz/ac 2,4D herbicide and 4.0 oz Sieze (Stripe Rust) were applied.

West (Panhandle):

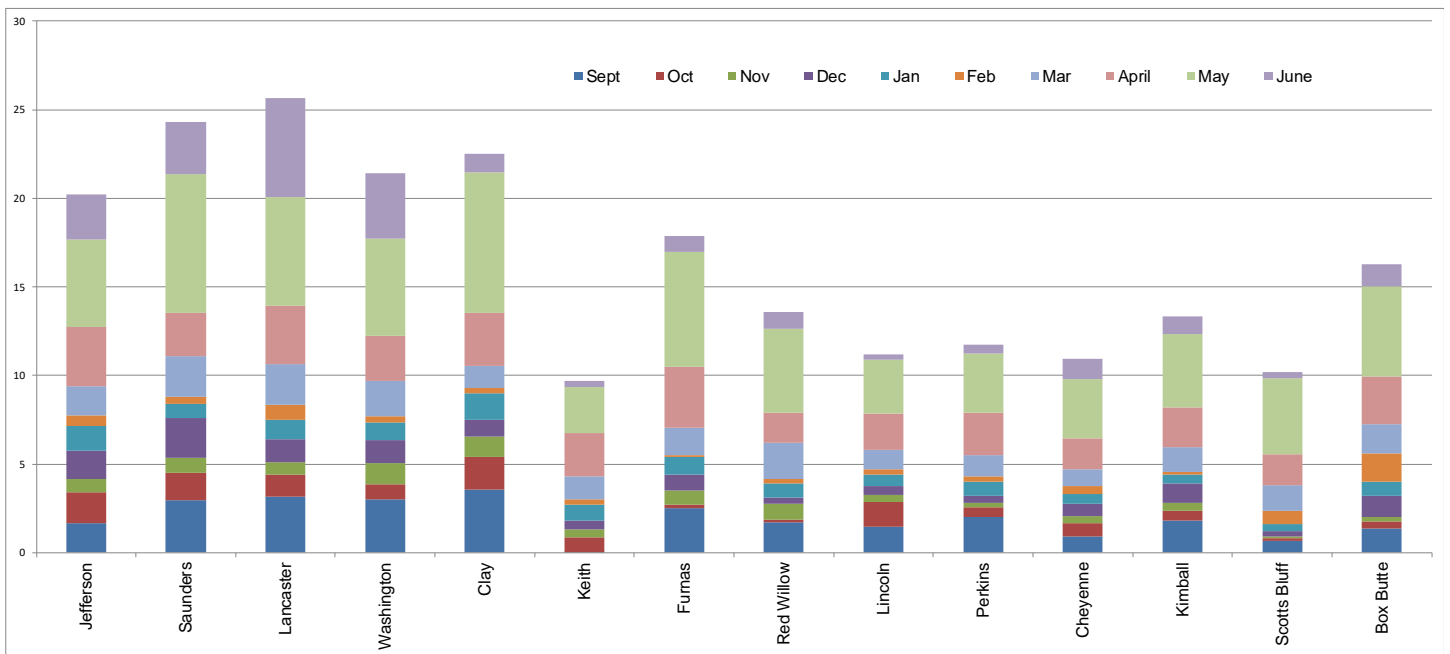
Five locations were planted in the West (Panhandle District). One irrigated trial was planted in Box Butte County. Rainfed trials were planted in Box Butte, Cheyenne, Kimball, and Scotts Bluff. All rainfed sites were left fallow the previous year with millet or wheat being the previous crop. Conventional tillage practices were used at all locations (Table B).

- The Box Butte County Irrigated trial was planted on September 18th. Plots were not harvested.
- The Cheyenne County Rainfed trial was planted on September 13th. Seed was sown into conventionally-tilled soil. A total of 50 lb/ac N was applied in late spring of 2016 and 25 lb/ac N as a 2017 spring topdress. Plots were harvested on July 8th with a top yield of 102 bu/ac and an average yield of 75 bu/ac. 8 oz/ac LV6 herbicide and 2.56 oz/ac Lamba insecticide were applied.
- The Kimball-Deuel County Rainfed trial was planted on September 19th into conventionally-tilled soil. 50 lb/ac N fertilizer was applied in the fall & 30 lb/ac N as a spring topdress. Plots were harvested on July 20th with a top yield of 75 bu/ac and average yield of 64 bu/ac.
- The Scotts Bluff Rainfed trial was planted on September 14th. Seed was sown into conventionally-tilled soil. Plots were harvested on July 21st with a top yield of 54 bu/ac and an average yield of 47 bu/ac.
- The Box Butte County Rainfed trial was planted on September 12th. Plots were harvested on July 19th with a top yield of 86 bu/ac and an average yield of 70 bu/ac.

2017 WINTER WHEAT TRIAL LOCATIONS MAP



2017 WINTER WHEAT TRIAL SITE PRECIPITATION



**TABLE A - LOCATION SUMMARY FOR NEBRASKA
WINTER WHEAT VARIETY TESTS - 2017**

Location	Cooperator	Latitude	Longitude	Dates		Location Mean Yield (bu/a)	
				Plant	Harvest	Top Yield	Site Avg
Southeast							
Jefferson Rainfed	Mark Knobel, Fairbury, NE	40.277048	-97.216357	10/18/16	7/10/17	122	108
Saunders Rainfed Late	UNL ARDC; Ithaca, NE	41.161044	-96.410843	10/18/16	7/11/17	101	87
Lancaster Rainfed	UNL Havelock Farm; Lincoln, NE	40.855744	-96.612327	9/29/16	7/7/17	116	93
Washington Rainfed	Greg & Gerald Hoegermeyer, Winslow, NE	41.622270	-96.410291	10/11/16	7/17/17	135	111
South Central							
Clay Rainfed	South Central Res & Ext Center; Harvard, NE	40.573056	-98.129722	9/22/16	7/18/17	83	72
West Central							
Keith Rainfed	Toby Spiehs, Brule, NE	41.236390	100.804400	9/20/16	7/13/17	80	72
Furnas Rainfed	Rex McClain; Arapahoe, NE	40.510830	100.885800	9/19/16	7/17/17	Inconsistent Data	
Red Willow Rainfed	Cappel Farms; McCook, NE	40.265411	-100.700517	9/22/16	7/11/17	96	71
Lincoln Rainfed	UNL WCREC; North Platte, NE	41.061183	-100.753267	9/20/16	7/8/17	73	61
Perkins Rainfed	UNL Stumpf Wheat Center; Grant, NE	40.843433	-101.701767	9/23/16	7/14/17	56	43
Panhandle (West)							
Cheyenne Rainfed	High Plains Ag Lab, Sidney, NE	41.232912	-103.011645	9/13/16	7/8/17	92	75
Kimball Rainfed	Damon Birkhofer, Kimball, NE	41.163449	-103.754523	9/19/16	7/20/17	73	64
Scotts Bluff Rainfed	Steve Pitt, Stegall, NE	41.813263	-103.965958	9/14/16	7/21/17	53	47
Box Butte Rainfed	Cullan Farms; Hemingford, NE	42.246695	-103.014671	9/12/16	7/19/17	84	70
Irrigated							
Box Butte Irrigated	Darby Jespersen; Hemingford, NE	42.325680	-103.093067	9/18/16	Not Harvested		
Chase Irrigated	Tom Luhrs; Enders, NE	40.463467	-101.533633	10/14/16	7/12/17	115	98

TABLE B - SOIL TYPE, PREVIOUS CROP, FERTILIZERS AND HERBICIDES/ FUNGICIDES APPLIED TO NEBRASKA WINTER WHEAT VARIETY TESTS

Location	Soil Type	Tillage System	Previous Crop(s)	Fertilizer	Herbicide/Fungicide
Southeast					
Jefferson Rainfed	Crete silt loam	No-till	Soybean	100 lb/ac N & 17 lb/ac S in March, 1 gal/ac N-Cline at flag leaf	0.75 oz/ac Harmony Extra SG in March, 4 oz/ac Bumper before jointing, 14 oz/ac Quilt XL at flag leaf, 8.2 oz/ac Prostaro at full heading
Saunders Rainfed Late	Filbert silt loam	Disked	Oats	80 lb/ac N	1/3 oz/ac Finesse
Lancaster Rainfed	Crete and Butler silt loam	Disked	Oats	60 lb/ac dry N in Sept & 80 lb/ac liquid N in March	Prowl H2O + 2,4-D
Washington Rainfed	Moody silty clay loam	No-till	Soybean	100 lbs/ac N, 60 lbs/ac K2O, 45 lbs/ac Cl, and 15 lbs/ac S top-dressed prior to jointing	6.5 oz/ac Prostaro at Feekes 10.5.1 (FHB)
South Central					
Clay Rainfed	Crete silt loam	Conventional	Fallow (Corn)	11 lb/ac N, 52 lb/ac P2O5	Verdict + Atrazine + Roundup PowerMax preplant, Warrant + Roundup PowerMax postplant
West Central					
Keith Rainfed	Kuma loam	No-till	Fallow (Corn)	5 gal/ac 10-34-0	-
Furnas Rainfed	Holdrege silt loam	No-till	Fallow (Corn)	100 lb/ac N spring topdress	2,4-D + Affinity
Red Willow Rainfed	Keith silt loam	No-till	Fallow (Corn)	-	0.35 oz/ac Amber + Banvel
Lincoln Rainfed	Hall silt loam	No-till	Fallow (Corn)	60 lb/ac N as 32-0-0	0.35 oz/ac Amber, 4.0 oz/ac Tebucur (Stripe Rust)
Perkins Rainfed	Alliance silt loam	No-till	Fallow (skip row corn)	70 lb/ac N as 32-0-0 in spring	6.88 oz/ac PowerFlex + 8 oz/ac 2,4-D, 4.0 oz/ac Sieze (Stripe Rust)
Panhandle (West)					
Cheyenne Rainfed	Duroc loam	Conventional	Fallow (Millet)	50 lb/ac N previous spring & 25 lb/ac N spring topdress	8 oz/ac LV6, 2.56 oz/ac Lamba
Kimball/Banner Rainfed	Rosebud loam	Conventional	Fallow (Wheat)	50 lb/ac N in Fall & 30 lb/ac N spring topdress	-
Scotts Bluff Rainfed	Bridget very fine sandy loam	Conventional	Fallow (Wheat)	-	-
Box Butte Rainfed	Rosebud loam	Conventional	Fallow (Corn)	50-30-0, 5lb S, 2lb Zn	Ally LV6, Twinline (flagleaf)
Irrigated					
Box Butte Irrigated	Vetal fine sandy loam	Conventional	Dry Beans (Corn)	-	Headline applied at flag leaf
Chase Irrigated	Creighton very fine sandy loam	Conventional	Potatoes	-	-

TABLE C - ENTRIES AND CONTACT INFORMATION

The entrant should be contacted for information on seed availability, adaptation and agronomic characteristics.

Brand	Contact Information	Varieties in Trials
Crop Rsch Foundation of WY	P.O. Box 1778 Laramie, WY 82073-1778 wyomingwheat.com	Cowboy
CROPLAN	winfield.com/farmer/croplan	EXP 69-16, EXP 26-16
Dyna-Gro	dynagroseed.com	Long Branch
Husker Genetics	1071 County Rd G Ithaca, NE 68033 huskergenetics.unl.edu	Camelot, Goodstreak, Freeman, Overland, Panhandle, Pronghorn, Robidoux, Ruth (NE10589), Settler CL, Wesley
Limagrain Cereal Seeds	6414 N. Sheridan Wichita, KS 67204 limagraincerealseeds.com	T158, LCS Chrome, LCS Mint, LCH13NEDH-14-71, LCH14-77
Montana Foundation Seed	Dept Plant Sci Montana St Univ. Bozeman, MT 59717-3150 plantsciences.montana.edu/FoundationSeed	Warhorse
PlainsGold	Colorado State University Fort Collins, CO 80523 plainsgold.com	Avery, Langin, Snowmass
South Dakota AES	South Dakota State University Brookings, SD 57007	Oahe, Redfield
Syngenta - AgriPro	#29 Rolling Hills Road Kearney, NE 68845 agripro.com	SY Flint, SY Monument, SY Sunrise, SY Wolf, Spur
WestBred	800 N. Lindbergh Ave. St. Louis, MO 63167 westbred.com	WB4269, WB4303, WB4458, WB4462, WB4721, WB-Cedar, WB-Grainfield, Winterhawk
Wildcat Genetics	Kansas State University 2004 Throckmorton Plant Sci Center 1712 Claflin Rd. Manhattan, KS 66506-0110 785-532-6101	KS061193K-2, Tatanka, Oakley CL, Zenda

WINTER WHEAT VARIETY CHARACTERISTICS 2017 (PAGE 1/3)

Variety	Origin	Family	Maturity	Winter Hardiness	Straw Strength	Plant Height	Coleoptile length
1863	KSU	-	3	4	2	6	5
Alliance	NE	Chisholm	3	4	5	6	2
Antelope (W)	ARS-NE	Arlin, Pronghorn	4	5	5	4	5
Anton (W)	ARS-NE	Platte	4	5	6	3	--
Arrowsmith (W)	ARS-NE	Arapahoe	4	4	4	7	7
Art	ASI	Jagger,TAM200, Archer	2	4	4	2	--
Aspen	WB	Pioneer	1	4	6	2	5
Bill Brown	CO	Yumar	3	3	4	3	3
Bond CL	CO	Yumar	2	3	4	5	6
Brawl CL Plus	CO	Above, Halt	2	--	6	5	9
Buckskin	NE	Scout	3	4	3	9	9
Byrd	CO	TAM 112, Ike, Halt	3	--	4	5	7
Camelot	NE	--	3	5	5	3	5
Cowboy	CO/WY	TAM 111/CO980829	4	4	2	4	6
Denali	CO	Hatcher sib, TAM 111	4	--	4	7	8
Everest	KSU	Pioneer	1	4	5	5	5
EXP 26-16	CROPLAN/	-	3	4	2	6	5
EXP 69-16	CROPLAN/	-	5	5	5	3	6
Expedition	SD	Tomahawk/Bennett	1	4	5	5	3
Freeman	NE	(ABI86*3414/JAG//K92)/ALLIANCE	3	5	3	2	2
Goodstreak	NE	Colt	3	4	4	8	9
Greer	APSY	--	3	3	5	2	5
Hallam	NE	Brule, Niobrara	1	4	5	7	4
Hatcher	CO	Yumar	3	3	3	2	6
Infinity CL	NE	Windstar, Above, Millennium	4	4	5	7	4
KanMark	KSU	-	3	4	6	3	5
Karl 92	KSU	Karl Selection	1	5	4	3	3
KS061193K-2	Kansas	HRW	3	N/A	6	8	N/A
Langin	CO	Byrd, Hatcher	1	4	2	2	5
LCH13NEDH-14-71*	NE/LI	Diverse	4	4	6	3	--
LCH14-77	LIMA	-	3	4	4	6	7
LCS-Chrome	LIMA	-	4	4	5	7	5
LCS-Mint	LIMA	Overley, Yumar, Exp	3	3	4	7	7

1 = Early
5 = Late

1 = Tender
5 = Hardy

1=Weak
6=Strong

1 = Short
9 = Tall

1 = Short
9 = Long

	Hessian Fly	Leaf Rust	Stem Rust	Stripe Rust	Tan Spot	Soil Borne	Wheat Streak Mosaic	Bushel Weight	Grain Protein	Target Environment	
	9	7	1	3	6	2	5	2	6	SC and SE	
	6	9	3	3	7	9	7	6	9	--	
	9	3	1	4	--	9	9	5	4	--	
	9	3	3	6	--	1	9	4	2	--	
	9	3	3	4	--	9	9	5	1	--	
	4	1	1	3	3	3	--	3	3	--	
	5	4	1	3	5	2	6	4	4	All	
	?	2	8	6	?	?	6	2	--	West NE	
	?	7	8	8	?	?	4	7	--	West NE	
	9	6	3	8	--	3	6	2	--	West NE	
	6	9	9	--	--	3	7	4	3	--	
	9	6	9	9	--	3	6	5	--	West NE	
	5	1	3	9	3	1	6	6	7	--	
	1	9	Seg	8	9	9	9	5	4	West, rainfed and irrigated	
	1	9	3	8	--	9	9	2	--	West NE	
	5	3	3	8	7	1	7	2	5	South	
	--	4	2	2	7	2	8	3	3	Dryland, Drought Tolerance	
	--	1	1	2	2	--	--	4	5	Broadly adapted, Dryland, can be used on irrigation	
	9	7	3	9	9	5	7	3	3	--	
	Seg	6	2	4	--	1	9	6	5	All NE	
	6	8	3	--	--	9	9	2	4	--	
	9	4	1	3	5	1	--	6	5	--	
	9	5	3	--	--	3	5	4	5	--	
	?	7	7	4	?	?	7	5	--	West NE	
	9	3	3	7	--	3	3	--	--	--	
	9	2	3	6	6	1	6	2	6	SC,WC and W	
	9	9	7	5	3	1	9	3	3	--	
	N/A	2	2	2	N/A	1	N/A	N/A	N/A	SC NE	
	9	7	8	5	--	2	7	3	--	West NE	
	--	4	2	2	--	1	7	2	--	--	
	--	--	2	2	2	2	--	2	3	--	
	--	2	9	1	2	2	--	3	3	--	
	--	9	9	3	2	2	--	3	3	---	
	1 = Resistant 9 = Susceptible Seg = Segregating							1 = High 9 = Low			

WINTER WHEAT VARIETY CHARACTERISTICS 2017 (PAGE 2/3)

Variety	Origin	Family	Maturity	Winter Hardiness	Straw Strength	Plant Height	Coleoptile length	
Long Branch	Dynagrow	Kansas	4	5	4	7	N/A	
Lyman	SD	KS93U134/Arapahoe	3	5	3	6	3	
Mace	ARS-NE	Yuma, Arlin	3	4	6	2	--	
Mattern	ARS-NE	Jagger, Nekota	3	5	5	5	4	
MCGill	NE	Ike	2	4	3	4	5	
Millennium	NE	Abilene, Arapahoe	4	5	5	7	3	
N11MD2166W	ARS-NE	--	--	--	--	--	--	
N13MD2589W	NE	--	--	--	--	--	--	
NE10478-1	NE	Camelot	1	4	5	3	--	
NE12561	NE	Robioux	4	4	5	3	--	
NE12589	NE	Overland and Camelot	3	4	4	3	--	
NE13515	NE	Robidoux	3	4	5	4	--	
NE13604	NE	McGill	5	4	5	5	--	
NI10718W	ARS-NE	Anton	4	4	4	3	--	
NI12702W	NE	NuHills	4	4	5	4	--	
NI13706	NE	Robidoux	2	4	5	3	--	
NW13493	NE	Diverse, sib of NW13570	2	4	4	4	--	
NW13570	NE	Diverse, Sib of NW13493	3	4	3	4	--	
Oahe	SD	Ransom/SD96240-3-1	3	5	4	7	6	
Oakley CL	Kansas	HRW	4	5	3	7	9	
Overland	NE	Millennium, Wahoo	4	5	5	5	--	
Panhandle	NE	NE97426 /NE98574	4	4	4	7	7	
PostRock	ASI	Jagger, Ogallala	2	4	5	2	3	
Pronghorn	NE	Colt	3	4	3	8	9	
Redfield	SD	Wesley/CDC Falcon	4	5	6	4	5	
Robidoux	NE	Wahoo, Millennium	3	4	--	5	6	
Ruth	NE	OK98697/'Jagalene'/'Camelot	4	4	4	5	7	
Scout 66	NE	Ponca	3	3	1	9	8	
Settler CL	NE	Infinity, Millennium, Wesley	3	5	--	1	6	
Snowmass	CO	KS96HW94//Trego/CO960293	5	--	2	6	5	
Spur	APSY/	MT2113*4/MTS0359	5	4	5	4	N/A	
SY Flint	APSY		2	2	4	2	5	
SY Gold	APSY	Jagger	3	2	5	4	5	
			1 = Early 5 = Late	1 = Tender 5 = Hardy	1=Weak 6=Strong	1 = Short 9 = Tall	1 = Short 9 = Long	

	Hessian Fly	Leaf Rust	Stem Rust	Stripe Rust	Tan Spot	Soil Borne	Wheat Streak Mosaic	Bushel Weight	Grain Protein	Target Environment
	9	7	4	2	N/A	2	N/A	N/A	N/A	Irrigated & Dryland
	--	3	3	1	5	--	7	1	2	--
	9	7	1	9	--	9	1	7	3	--
	--	8	1	2	--	7	8	3	2	SE/SC
	9	7	3	9	--	3	9	7	--	--
	5	7	3	3	7	9	9	3	5	--
	--	5	2	2	--	7	7	5	--	--
	--	--	1	6	--	--	1	--	--	--
	4	5	4	8	--	1	7	2	--	--
	3	4	2	2	--	1	7	2	--	--
	3	7	2	3	--	1	7	2	--	--
	3	7	3	2	--	1	7	2	--	--
	4	8	5	4	--	1	7	3	--	--
	8	8	4	8	--	--	7	5	--	--
	9	6	1	2	--	3	7	1	--	--
	8	5	3	3	--	2	7	4	--	--
	9	3	1	2	--	1	7	3	--	--
	3	8	4	1	--	2	7	4	--	--
	--	3	7	1	5	--	3	2	2	--
	8	4	2	2	6	7	2	5	5	SW NE
	9	3	4	7	6	9	5	2	--	--
	9	6	3	8	--	4	9	6	8	Western NE
	9	3	3	3	3	2	6	2	3	--
	9	7	3	--	--	9	9	5	5	--
	--	5	5	5	4	--	7	2	2	--
	9	7	4	4	--	3	9	5	--	--
	5	6	1	3	--	1	9	1	4	--
	9	7	5	8	9	9	7	4	5	--
	9	5	4	8	--	1	5	--	--	--
	--	5	--	7	--	--	2	4	--	West NE
	N/A	4	Seg	2	4	N/A	N/A	4	7	West rainfed, sawfly areas
	1	7	1	2	6	1	5	3	3	Irrigated and dryland managed for high yields
	9	1	1	9	5	1	N/A	2	3	--
	1 = Resistant 9 = Susceptible Seg = Segregating							1 = High 9 = Low		

WINTER WHEAT VARIETY CHARACTERISTICS 2017 (PAGE 3/3)

Variety	Origin	Family	Maturity	Winter Hardiness	Straw Strength	Plant Height	Coleoptile length
SY Monument	APSY	-	4	4	3	6	5
SY Southwind	APSY	--	2	4	4	2	--
SY Sunrise	APSY		4	4	5	2	5
SY Wolf	APSY	--	3	4	5	2	5
T158	LIMA	TAM 107	2	5	4	5	5
T163	LIMA	TAM 107	2	--	4	4	--
Tatanka	Kansas	HRW	3	N/A	2	6	N/A
Thunder CL	CO	KS01-5539/CO99W165	2	--	5	2	5
Turkey	Ukraine	--	5	4	2	9	9
Wahoo	NE	Arapahoe	4	4	5	6	4
WB4269	WB		2	4	4	3	N/A
WB4303	WB		2	4	6	4	N/A
WB4458	WB	Overley, Goertzen	3	5	6	4	5
WB4462	WB		3	5	3	8	N/A
WB4721	WB		4	4	6	5	N/A
WB-Cedar	WB	Pioneer	1	4	6	2	5
WB-Grainfield	WB	KSU	4	4	4	6	5
Wesley	ARS-NE	Sumner	3	5	5	2	1
Winterhawk	WB	Pioneer	3	5	4	6	5
Zenda	Kansas	HRW	3	N/A	6	6	N/A
			1 = Early 5 = Late	1 = Tender 5 = Hardy	1=Weak 6=Strong	1 = Short 9 = Tall	1 = Short 9 = Long

	Hessian Fly	Leaf Rust	Stem Rust	Stripe Rust	Tan Spot	Soil Borne	Wheat Streak Mosaic	Bushel Weight	Grain Protein	Target Environment
	2	3	3	1	--	3	5	3	3	All
	4	1	1	1	--	2	4	3	5	--
	9	5	1	2	7	7	--	2	3	Irrigated and dryland managed for high yields
	9	2	1	3	2	1	5	3	4	--
	--	2	9	2	9	2	--	2	3	--
	9	6	--	1	1	--	--	3	--	--
	N/A	4	2	2	7	1	8	N/A	N/A	SW/SC NE
	--	5	--	4	--	--	3	4	--	West NE
	9	7	7	9	--	9	5	3	1	--
	6	7	3	--	--	9	9	6	5	--
	N/A	2	1	2	6	3	N/A	3	3	All
	9	3	1	5	8	1	4	7	5	All
	9	7	1	3	7	5	4	3	3	All
	N/A	3	1	7	6	1	4	3	3	West
	9	3	1	2	4	9	3	2	2	All
	5	5	1	2	5	2	6	4	4	All
	9	5	1	3	4	1	6	4	5	Central and west
	9	8	1	7	5	1	9	7	4	--
	4	7	9	7	5	2	4	2	4	All
	N/A	3	2	2	5	1	7	N/A	N/A	SC/SE NE
	1 = Resistant 9 = Susceptible Seg = Segregating							1 = High 9 = Low		

SOUTHEAST DRYLAND WHEAT VARIETY TESTS - 2017

SALINE, SAUNDERS, LANCASTER, WASHINGTON COUNTIES

Brand	Variety	Average Yield (bu/a)	Saline/Jeffer. Yield (bu/a)	Saunders Yield (bu/a)	Lancaster Yield (bu/a)	Washing. Yield (bu/a)	Bushel Weight (lb/bu)	Plant height (in)	Kernel Weight (000/lb)	Grain Protein (%)
WestBred	WB4458	115	111	96	112	140	57.6	38	15	13.9
WestBred	WB-Grainfield	115	126	99	121	114	57.6	41	16.04	12.4
----	NE12561	115	120	105	110	125	58.7	40	14.04	14.1
WestBred	WB4269	114	113	104	114	124	57.4	34	16.31	13.7
KS Wheat Alliance	Zenda	112	111	98	104	135	58.9	38	14.91	13.4
Limagrain	LCH13NEDH-14-71*	112	117	95	104	130	58	39	14.66	13.4
WestBred	WB4721	112	114	98	116	119	59.3	39	15.19	14.3
AgriPro	SY Wolf	111	114	93	108	130	55.9	37	15.38	14.2
----	NW13493	111	113	95	112	123	58.4	40	16.3	13.8
WestBred	WB4303	109	105	87	109	134	54.5	36	15.52	13.6
----	NW13570	109	111	90	114	122	56.3	40	17.23	13.7
----	NI13706	107	117	90	107	115	58	37	15.75	14.2
WestBred	WB-Cedar	106	97	93	98	135	57.7	35	12.37	14.2
Husker Genetics	Ruth	104	123	80	101	110	56.8	41	16.46	13
Limagrain	LCS Chrome	104	102	95	112	108	56.6	40	17.58	14.5
----	NI12702W	103	106	94	99	114	60.1	42	14.75	14.5
----	NE13515	103	111	89	99	112	59.6	42	16.28	14.5
----	NE10478-1	103	119	96	92	104	57.1	37	15.43	13.9
Husker Genetics	Freeman	102	114	87	96	109	54.2	40	17.34	13.5
Dyna-Gro	Long Branch	101	120	92	90	101	55.5	40	15.59	13.6
----	NE13604	96	109	87	85	104	57.5	44	15.68	14
SD AES	Oahe	95	103	86	77	113	58.3	46	14.63	13.8
Husker Genetics	Overland	91	109	85	77	93	56.4	43	17.44	13.5
SD AES	Redfield	90	109	76	77	98	57	39	17.35	14.2
----	NI10718W	90	114	73	77	94	54.6	39	15.98	13.6
NuPride	Camelot	85	108	73	62	97	54.4	43	15.83	14.2
----	Wesley	84	94	70	69	102	53.3	37	15.62	14.4
----	N13MD2589W	71	81	65	55	82	57.9	44	18.07	16.9
----	Scout 66	63	82	57	45	68	55.8	46	14.47	15.3
----	Turkey	58	75	53	37	66	55.2	47	16.05	15.2
Average all entries		100	108	87	93	111	57	40	16	14
Difference required for significance at 5%		13	8	7	8	13	2.2	1.0	0.8	1.6

SOUTHEAST DRYLAND WHEAT VARIETY TESTS 2014- 2017

Brand	Variety	Grain Yield (bu/a)	Bushel Weight (lb/bu)	Kernel Weight (000/lb)	Grain Protein (%)	Plant Height (inches)
Two year averages						
WestBred	WB-Grainfield	96	58	15	13	39
AgriPro Syngenta	SY Wolf	95	57	15	14	37
----	NE12561	93	59	14	14	39
Kansas Wheat Alliance	Zenda	93	59	14	13	38
WestBred	WB4721	93	60	15	14	38
Limagrain Cereal Seeds	LCH13NEDH-14-71*	92	58	14	13	38
WestBred	WB4303	91	55	15	13	36
Husker Genetics	Freeman	90	55	16	13	39
----	NI13706	88	58	15	14	37
WestBred	WB-Cedar	88	58	12	14	35
Husker Genetics	Ruth	88	58	16	13	41
----	NI12702W	86	60	14	14	41
Dyna-Gro Seeds	Long Branch	81	56	15	14	39
----	NI10718W	79	56	15	13	39
Husker Genetics	Overland	75	57	17	13	42
----	Wesley	73	55	16	14	37
NuPride	Camelot	71	55	15	14	42
----	Scout 66	51	53	14	15	45
----	Turkey	47	52	16	15	46
Average of all entries		83	57	15	14	39
Difference required for significance at 5%		10	3	1.0	0.4	1
Three year averages						
AgriPro Syngenta	SY Wolf	80	56	15	15	37
Husker Genetics	Freeman	73	54	17	14	39
WestBred	WB-Cedar	73	55	13	15	34
Husker Genetics	Ruth	71	55	17	13	40
----	NI10718W	64	54	16	14	38
Husker Genetics	Overland	63	55	17	14	41
----	Wesley	58	52	16	14	36
NuPride	Camelot	56	52	16	14	41
----	Scout 66	43	51	14	15	46
----	Turkey	40	49	16	15	46
Average of all entries		62	53	16	14	40
Difference required for significance at 5%		11	3	1.1	0.4	2

TABLES CONTINUED ON NEXT PAGE

SOUTHEAST DRYLAND WHEAT VARIETY TESTS (continued)

Brand	Variety	Grain Yield (bu/a)	Bushel Weight (lb/bu)	Kernel Weight (000/lb)	Grain Protein (%)	Plant Height (inches)
Four year averages						
AgriPro Syngenta	SY Wolf	79	57	15	15	34
Husker Genetics	Freeman	72	54	16	14	36
Husker Genetics	Ruth	72	56	16	13	38
WestBred	WB-Cedar	72	56	13	15	31
Husker Genetics	Overland	65	56	16	14	39
----	Wesley	60	53	15	14	34
NuPride	Camelot	60	53	15	14	39
----	Scout 66	48	53	14	15	44
----	Turkey	46	51	16	15	44
Average of all entries		64	54	15	14	38
Difference required for significance at 5%		11	3	1.1	0.5	2



SOUTH CENTRAL DRYLAND WHEAT VARIETY TEST - 2017

CLAY COUNTY

Brand	Variety	Average Yield (bu/a)	Plant Height (in)	Kernel Weight (000/lb)	Grain Protein (%)
Limagrain Cereal Seeds	LCH13NEDH-14-71*	85	35	14	13
WestBred	WB4721	84	36	14	14
----	NE13604	84	40	15	14
WestBred	WB-Grainfield	83	34	17	13
Limagrain Cereal Seeds	LCS Chrome	81	36	17	14
----	NW13570	81	36	18	14
Husker Genetics	Ruth	79	39	16	13
AgriPro Syngenta	SY Monument	79	34	16	13
----	NI12702W	79	36	14	14
----	NE12561	79	32	14	14
----	NE10478-1	79	33	14	14
Limagrain Cereal Seeds	LCS Mint	78	36	15	12
Dyna-Gro Seeds	Long Branch	78	36	16	13
----	NW13493	78	36	18	14
----	NE13515	77	38	15	14
Husker Genetics	Overland	76	41	16	13
----	NI13706	72	32	15	15
AgriPro Syngenta	Bob Dole	71	36	15	14
Husker Genetics	Freeman	70	34	17	13
AgriPro Syngenta	SY Wolf	70	32	15	14
----	Wesley	69	33	15	13
----	N11MD2166W	69	39	17	15
----	NI10718W	69	35	15	13
WestBred	WB4458	68	32	14	14
Kansas Wheat Alliance	Zenda	68	34	15	13
----	Mace	58	35	17	14
----	N13MD2589W	52	38	16	16
----	Turkey	44	40	17	14
----	Scout 66	36	39	15	15
Average of all entries		72	36	16	14
Difference required for significance at 5%		7	2	2	1

SOUTH CENTRAL DRYLAND WHEAT VARIETY TESTS 2014- 2017

Brand	Variety	Grain Yield (bu/a)	Kernel Weight (000/lb)	Grain Protein (%)	Plant Height (inches)
Two year averages					
WestBred	WB-Grainfield	71	18	14	38
WestBred	WB4721	70	17	15	38
----	NE12561	70	15	15	37
Kansas Wheat Alliance	Zenda	68	16	14	38
Limagrain Cereal Seeds	LCH13NEDH-14-71*	68	17	14	38
Husker Genetics	Ruth	66	17	14	41
----	NI12702W	66	16	15	39
AgriPro Syngenta	SY Monument	65	17	14	37
Limagrain Cereal Seeds	LCS Chrome	64	19	15	39
----	NI13706	63	17	15	37
Husker Genetics	Freeman	61	19	14	38
Limagrain Cereal Seeds	LCS Mint	60	16	13	39
Dyna-Gro Seeds	Long Branch	59	17	14	39
AgriPro Syngenta	SY Wolf	59	17	15	36
Husker Genetics	Overland	56	19	14	42
----	Wesley	53	19	14	38
----	NI10718W	51	17	14	38
----	Turkey	29	19	15	41
----	Scout 66	25	18	16	41
Average of all entries		59	17	14	38
Difference required for significance at 5%		13	2	1	3
Three year averages					
WestBred	WB-Grainfield	61	18	14	38
Husker Genetics	Ruth	56	17	14	41
Husker Genetics	Overland	49	19	14	42
Husker Genetics	Freeman	48	19	14	38
Limagrain Cereal Seeds	LCS Mint	45	16	13	39
----	NI10718W	42	17	14	38
----	Wesley	42	19	14	38
----	Turkey	24	19	15	41
----	Scout 66	24	18	16	41
Average of all entries		43	18	14	39
Difference required for significance at 5%		13	NS	0.8	NS

TABLE CONTINUED ON NEXT PAGE

SOUTH CENTRAL DRYLAND WHEAT VARIETY TESTS (continued)

Brand	Variety	Grain Yield (bu/a)	Kernel Weight (000/lb)	Grain Protein (%)	Plant Height (inches)
Four year averages					
Husker Genetics	Ruth	59	16	14	38
Husker Genetics	Overland	52	17	14	40
Husker Genetics	Freeman	51	18	14	36
Limagrain Cereal Seeds	LCS Mint	46	16	14	37
----	Wesley	45	18	15	35
----	Turkey	29	18	16	41
----	Scout 66	27	16	16	41
Average of all entries		44	17	15	38
Difference required for significance at 5%		11	NS	0.6	3



WEST CENTRAL DRYLAND WHEAT VARIETY TESTS - 2017

KEITH, RED WILLOW, LINCOLN, AND PERKINS COUNTIES

Brand	Variety	Average Yield (bu/a)	Keith Yield (bu/a)	Red Willow Yield (bu/a)	Lincoln Yield (bu/a)	Perkins Yield (bu/a)	Bushel Weight (lb/bu)	Plant Height (inches)	Kernel Weight (000/lb)	Grain Protein (%)
Husker Genetics	Ruth	74	78	108	64	44	52	34	19	14
----	NW13570	71	75	87	75	45	52	32	19	14
Limagrain	LCH13NEDH-14-71*	70	68	95	71	46	53	34	17	14
Limagrain	LCS Chrome	69	63	105	74	32	53	32	18	14
WestBred	WB4462	69	81	81	68	47	54	33	15	14
----	NE13604	67	79	79	65	44	56	34	18	14
----	NE10478-1	67	68	83	63	54	53	32	18	14
CROPLAN	EXP 69-16	67	79	72	76	42	53	34	15	13
AgriPro Syngenta	SY Wolf	66	73	87	61	41	51	33	17	14
AgriPro Syngenta	SY Monument	66	74	71	71	49	53	32	18	13
PlainsGold	Langin	66	81	65	64	52	52	33	18	13
Limagrain	T158	65	74	62	63	60	54	33	15	13
AgriPro Syngenta	SY Sunrise	65	54	85	70	49	53	33	17	14
----	NI13706	65	67	75	63	53	54	33	18	14
WestBred	WB-Grainfield	64	74	82	65	35	53	33	17	13
----	NW13493	64	78	65	68	43	53	32	17	13
Husker Genetics	Robidoux	63	66	62	67	58	52	32	18	13
Husker Genetics	Freeman	63	75	65	67	45	52	34	17	13
KS Wheat Alliance	Tatanka	63	69	74	63	45	52	32	18	13
WestBred	Winterhawk	62	63	75	66	43	53	33	17	14
KS Wheat Alliance	Oakley CL	62	79	68	61	40	53	33	16	14
Dyna-Gro Seeds	Long Branch	62	68	73	66	41	53	33	17	13
----	NE13515	62	72	75	56	43	53	34	18	14
Limagrain	LCS Mint	61	72	58	60	54	52	32	17	13
----	NE12561	61	77	70	64	34	55	32	17	14
CROPLAN	EXP 26-16	61	77	56	64	48	54	33	17	14
AgriPro Syngenta	SY Flint	60	62	77	59	40	51	33	18	14
WestBred	WB4721	60	66	80	59	35	56	34	16	14
----	NI12702W	60	61	75	59	46	56	33	17	14
PlainsGold	Avery	59	73	56	59	48	52	32	18	13
PlainsGold	Snowmass	58	77	71	51	32	52	34	18	13
WestBred	WB4458	58	66	69	53	44	51	32	16	15
Limagrain	LCH14-77	58	66	71	53	40	53	33	18	14
Husker Genetics	Overland	57	63	62	59	45	52	34	18	13
----	Mace	56	56	80	49	40	49	34	18	14
Husker Genetics	Settler CL	56	74	58	51	39	50	32	18	13

TABLE CONTINUED ON NEXT PAGE

WEST CENTRAL DRYLAND WHEAT VARIETY TESTS - 2017

KEITH, RED WILLOW, LINCOLN, AND PERKINS COUNTIES

Brand	Variety	Average Yield (bu/a)	Keith Yield (bu/a)	Red Willow Yield (bu/a)	Lincoln Yield (bu/a)	Perkins Yield (bu/a)	Bushel Weight (lb/bu)	Plant Height (inches)	Kernel Weight (000/lb)	Grain Protein (%)
----	NI10718W	56	67	61	55	40	50	33	17	13
----	Infinity CL	55	69	51	57	43	52	32	18	13
----	Wesley	53	58	61	59	32	50	32	17	14
----	N11MD2166W	52	68	50	60	31	51	33	18	14
----	N13MD2589W	52	55	66	50	38	54	34	18	15
----	Scout 66	44	56	48	43	29	52	34	16	14
----	Turkey	35	48	36	35	20	52	35	19	14
Average all entries		61	69	71	61	43	53	33	17	14
Diff required for significance at 5%		12	14	21	9	11	4	2	2	0.9



WEST CENTRAL DRYLAND WHEAT VARIETY TESTS 2014- 2017

Brand	Variety	Grain Yield (bu/a)	Bushel Weight (lb/bu)	Kernel Weight (000/lb)	Grain Protein (%)	Plant Height (inches)
Two year averages						
Husker Genetics	Ruth	78	55	16	13	36
Husker Genetics	Freeman	76	54	15	13	35
Limagrain Cereal Seeds	LCH13NEDH-14-71*	76	56	15	13	34
WestBred	WB-Grainfield	76	56	15	13	35
AgriPro Syngenta	SY Monument	75	54	16	13	34
Husker Genetics	Robidoux	75	55	16	13	34
Limagrain Cereal Seeds	LCS Chrome	74	55	17	14	34
Kansas Wheat Alliance	Tatanka	74	55	16	12	35
WestBred	Winterhawk	73	55	15	13	35
Kansas Wheat Alliance	Oakley CL	73	55	14	13	35
Limagrain Cereal Seeds	T158	72	55	13	13	35
AgriPro Syngenta	SY Sunrise	72	55	15	14	34
Limagrain Cereal Seeds	LCS Mint	72	55	15	13	35
AgriPro Syngenta	SY Wolf	71	53	15	14	34
Dyna-Gro Seeds	Long Branch	71	55	15	13	35
WestBred	WB4721	70	57	14	14	35
PlainsGold	Avery	69	54	16	12	34
AgriPro Syngenta	SY Flint	67	53	16	13	34
Husker Genetics	Overland	66	55	16	13	36
Husker Genetics	Settler CL	66	53	15	13	33
----	NI10718W	66	53	15	13	35
----	N11MD2166W	66	54	16	13	35
----	Infinity CL	65	54	16	13	35
----	Wesley	64	53	15	14	33
----	Mace	60	52	17	14	35
----	Scout 66	49	53	15	14	37
----	Turkey	44	54	17	14	38
Average of all entries		69	54	15	13	35
Difference required for significance at 5%		7	2	1.0	0.7	2

TABLE CONTINUED ON NEXT PAGE

Three year averages						
Husker Genetics	Ruth	73	55	15	14	36
AgriPro Syngenta	SY Monument	72	54	15	13	34
Husker Genetics	Freeman	69	53	15	13	34
WestBred	WB-Grainfield	69	55	15	13	35
Husker Genetics	Robidoux	69	54	15	13	34
AgriPro Syngenta	SY Sunrise	68	55	14	14	33
WestBred	Winterhawk	67	55	15	13	34
Limagrain Cereal Seeds	T158	65	55	13	13	34
----	N11MD2166W	64	54	16	13	36
----	NI10718W	63	53	14	13	34
Husker Genetics	Overland	63	55	15	13	35
----	Infinity CL	63	54	15	13	35
Limagrain Cereal Seeds	LCS Mint	62	53	15	13	34
PlainsGold	Avery	62	53	16	13	34
AgriPro Syngenta	SY Wolf	62	52	15	14	33
Husker Genetics	Settler CL	61	53	15	13	33
----	Wesley	59	52	15	14	33
AgriPro Syngenta	SY Flint	59	53	15	14	33
----	Mace	54	50	17	14	34
----	Scout 66	48	54	14	14	38
----	Turkey	43	54	16	14	39
Average of all entries		63	54	15	13	34
Difference required for significance at 5%		9	2	1.0	0.5	2
Four year averages						
AgriPro Syngenta	SY Monument	69	55	15	13	33
Husker Genetics	Ruth	68	56	15	14	35
WestBred	WB-Grainfield	67	56	14	13	33
Husker Genetics	Robidoux	66	55	15	14	33
Husker Genetics	Freeman	66	55	14	13	33
WestBred	Winterhawk	64	56	14	14	33
Limagrain Cereal Seeds	T158	62	56	13	14	33
Limagrain Cereal Seeds	LCS Mint	61	54	15	13	33
AgriPro Syngenta	SY Wolf	61	53	15	14	32
----	Infinity CL	61	55	15	14	33
Husker Genetics	Settler CL	61	54	14	14	33
Husker Genetics	Overland	60	56	15	14	34
----	Wesley	59	54	14	14	32
----	Mace	54	52	17	14	33
----	Scout 66	46	55	14	14	36
----	Turkey	43	55	16	15	37
Average of all entries		60	55	15	14	33
Difference required for significance at 5%		7	2	0.9	0.5	2

WEST DRYLAND WHEAT VARIETY TESTS - 2017

CHEYENNE, DEUEL/KIMBALL, BANNER/SB, AND BOX BUTTE COUNTIES (1/2)

Brand	Variety	Avg. Yield (bu/a)	Cheyenne Yield (bu/a)	Deuel/Kimball Yield (bu/a)	Banner/Scotts B Yield (bu/a)	Box Butte Yield (bu/a)	Bushel Weight (lb/bu)	Plant Height (inches)	Kernel Weight (000/lb)	Grain Protein (%)
PlainsGold	Langin	79	101	75	53	86	59	34	15	10
Husker Genetics	Robidoux	72	89	69	45	85	60	37	15	12
PlainsGold	Avery	72	87	72	45	83	60	35	16	11
WestBred	WB4462	72	83	70	52	81	60	37	14	12
CROPLAN by WinField	EXP 69-16	72	90	68	52	77	60	32	13	13
Dyna-Gro Seeds	Long Branch	71	84	74	49	77	59	35	15	12
Husker Genetics	Freeman	70	87	67	43	82	59	35	16	12
Husker Genetics	Ruth	70	82	71	48	80	60	36	15	13
Limagrain Cereal Seeds	LCS Mint	69	81	69	45	80	61	37	14	11
WestBred	WB-Grainfield	69	90	65	47	74	59	34	15	12
----	NE12589	69	79	66	47	82	59	34	16	12
----	NI13706	68	80	64	51	75	61	33	16	12
----	NE13604	68	76	70	50	76	58	38	15	12
----	NW13570	68	80	65	51	75	58	35	16	12
----	NE10478-1	68	81	66	53	70	59	32	15	12
WestBred	Winterhawk	66	77	70	42	76	59	35	15	12
Limagrain Cereal Seeds	T158	66	87	62	45	70	60	33	14	12
CRFW	Cowboy	66	66	68	54	76	57	34	16	12
AgriPro Syngenta	SY Monument	66	79	68	49	66	58	33	15	11
----	N11MD2166W	66	73	74	45	70	58	37	16	12
Limagrain Cereal Seeds	LCH13NEDH-14-71*	66	83	65	46	68	59	36	14	12
----	NW13493	66	80	65	46	74	60	35	15	12
Husker Genetics	Overland	65	77	69	44	71	59	36	16	12
----	Pronghorn	64	74	66	47	69	60	39	15	12
PlainsGold	Snowmass	64	69	67	42	76	57	36	14	11
----	Mace	63	69	62	46	76	58	34	16	13
----	NI10718W	63	80	62	50	60	59	34	14	12

TABLE CONTINUED ON NEXT PAGE

WEST DRYLAND WHEAT VARIETY TESTS - 2017

CHEYENNE, DEUEL/KIMBALL, BANNER/SB, AND BOX BUTTE COUNTIES (2/2)

Brand	Variety	Avg. Yield (bu/a)	Cheyenne Yield (bu/a)	Deuel/ Kimball Yield (bu/a)	Banner/ Scotts B Yield (bu/a)	Box Butte Yield (bu/a)	Bushel Weight (lb/bu)	Plant Height (inches)	Kernel Weight (000/lb)	Grain Protein (%)
----	NE13515	63	68	66	52	66	60	36	16	14
Husker Genetics	Settler CL	62	71	67	47	63	59	34	15	12
----	Panhandle	62	75	57	51	65	57	38	15	13
AgriPro Syngenta	SY Wolf	62	72	62	49	65	59	33	16	12
----	Wesley	61	69	59	49	66	58	32	15	13
----	Infinity CL	61	75	60	44	63	59	36	15	12
NuPride	Camelot	61	75	62	38	69	59	35	14	13
WestBred	WB4721	61	72	58	43	69	60	33	15	13
----	NE12561	61	71	65	46	63	60	34	15	12
CROPLAN by WinField	EXP 26-16	60	72	63	47	59	58	32	14	12
----	Goodstreak	59	61	60	49	65	59	40	16	12
Limagrain Cereal Seeds	LCS Chrome	59	72	53	44	65	58	34	17	13
----	NI12702W	58	71	56	45	59	60	36	15	12
----	Scout 66	56	66	54	44	58	59	39	14	12
----	Warhorse	52	44	58	41	64	56	34	18	13
----	N13MD2589W	50	57	47	46	50	58	36	16	13
----	Turkey	48	51	51	44	46	57	42	17	13
AgriPro Syngenta/CRW	Spur	48	35	67	49	41	54	32	17	12
Average of all entries		64	75	64	47	70	59	35	15	12
Diff. required for significance at 5%		9	12	6	10	10	2	3	1	1

WEST DRYLAND WHEAT VARIETY TESTS 2014 - 2017 (1/2)

Brand	Variety	Grain Yield (bu/a)	Bushel Weight (lb/bu)	Kernel Weight (000/lb)	Grain Protein (%)	Plant Height (inches)
Two year averages						
Dyna-Gro Seeds	Long Branch	66	59	15	12	33
Husker Genetics	Freeman	64	58	16	12	33
Husker Genetics	Ruth	64	60	15	12	34
Husker Genetics	Robidoux	64	59	16	12	35
Limagrains Cereal Seeds	LCS Mint	63	61	14	12	34
WestBred	WB-Grainfield	63	60	15	12	32
PlainsGold	Avery	62	59	16	11	33
AgriPro Syngenta	SY Monument	62	58	16	12	32
Limagrains Cereal Seeds	T158	61	60	14	12	31
CRFW	Cowboy	60	57	16	12	32
----	NE12589	60	59	16	12	32
WestBred	Winterhawk	59	59	16	12	33
----	N11MD2166W	59	58	16	12	36
Husker Genetics	Overland	58	59	16	12	34
Limagrains Cereal Seeds	LCH13NEDH-14-71*	58	60	14	12	33
AgriPro Syngenta	SY Wolf	57	59	16	12	32
----	Panhandle	57	58	15	13	36
WestBred	WB4721	57	60	15	13	31
----	Infinity CL	56	59	16	12	34
Husker Genetics	Settler CL	56	58	15	12	32
Limagrains Cereal Seeds	LCS Chrome	55	59	17	13	32
----	Pronghorn	55	59	16	12	37
----	Wesley	55	58	15	13	31
----	NI10718W	54	59	15	12	32
NuPride	Camelot	54	59	14	13	32
----	Mace	53	58	18	12	31
----	Goodstreak	51	59	17	12	37
----	Warhorse	51	57	18	13	32
----	Scout 66	50	59	14	13	39
----	Turkey	42	58	17	13	39
Average of all entries		58	59	16	12	33
Difference required for significance at 5%		6	1	0.9	0.5	2
Three year averages						
Husker Genetics	Ruth	52	61	15	13	33
Husker Genetics	Robidoux	51	60	15	12	33
Husker Genetics	Freeman	51	59	15	12	33
Limagrains Cereal Seeds	LCS Mint	50	61	14	11	33
WestBred	WB-Grainfield	50	60	14	12	32
AgriPro Syngenta	SY Monument	50	59	15	12	32
Limagrains Cereal Seeds	T158	49	61	14	12	30
PlainsGold	Avery	49	59	16	11	33

TABLE CONTINUED ON NEXT PAGE

WEST DRYLAND WHEAT VARIETY TESTS 2014 - 2017 (2/2)

Brand	Variety	Grain Yield (bu/a)	Bushel Weight (lb/bu)	Kernel Weight (000/lb)	Grain Protein (%)	Plant Height (inches)
Three year averages (continued)						
CRFW	Cowboy	48	58	16	12	33
----	N11MD2166W	47	59	16	12	35
Husker Genetics	Overland	47	60	16	12	34
WestBred	Winterhawk	47	60	15	11	33
----	Panhandle	46	59	15	13	36
AgriPro Syngenta	SY Wolf	45	59	16	12	31
----	Infinity CL	45	60	15	12	34
----	NI10718W	44	60	14	12	33
----	Pronghorn	44	60	15	12	38
Husker Genetics	Settler CL	44	59	14	12	32
----	Wesley	43	58	15	13	30
NuPride	Camelot	43	59	14	13	33
----	Mace	41	58	17	13	31
----	Warhorse	41	58	17	13	32
----	Goodstreak	41	60	16	13	38
----	Scout 66	39	60	14	13	40
----	Turkey	34	59	17	13	39
Average of all entries		45	59	15	12	34
Difference required for significance at 5%		5	1	0.7	0.6	2
Four year averages						
Husker Genetics	Ruth	53	61	14	13	32
Husker Genetics	Robidoux	52	60	15	12	32
Limagrain Cereal Seeds	LCS Mint	52	61	14	12	32
Husker Genetics	Freeman	51	59	15	12	31
CRFW	Cowboy	51	59	15	12	32
WestBred	WB-Grainfield	50	60	14	12	31
Husker Genetics	Overland	49	60	15	13	33
Limagrain Cereal Seeds	T158	49	61	13	12	29
WestBred	Winterhawk	49	60	14	12	31
----	Panhandle	48	59	14	13	35
Husker Genetics	Settler CL	46	59	14	12	31
----	Warhorse	45	58	17	13	31
NuPride	Camelot	45	59	13	13	32
----	Pronghorn	44	60	15	13	36
----	Wesley	44	58	14	13	29
----	Goodstreak	43	60	15	13	36
----	Scout 66	39	59	14	13	38
----	Turkey	36	59	16	14	37
Average of all entries		47	59	15	13	33
Difference required for significance at 5%		4	1	0.7	0.5	2

WEST IRRIGATED WHEAT VARIETY TEST - 2017

CHASE COUNTY

Brand	Variety	Average Yield (bu/ac)	Bushel Weight (lb/bu)	Plant Height (inches)	Kernel Weight (000/lb)	Grain Protein (%)
WestBred	WB4303	123	63	34	13	13
CROPLAN by WinField	EXP 69-16	116	66	34	13	11
AgriPro Syngenta	SY Wolf	113	66	34	14	12
Limagrain Cereal Seeds	LCH13NEDH-14-71*	112	65	37	14	12
Dyna-Gro Seeds	Long Branch	111	65	36	14	12
PlainsGold	Langin	111	64	32	15	11
WestBred	Winterhawk	109	66	38	13	12
AgriPro Syngenta	SY Sunrise	108	64	33	13	13
WestBred	WB-Grainfield	107	65	33	14	11
CROPLAN by WinField	EXP 26-16	107	67	38	13	12
-----	NI13706	105	67	33	14	13
----	Wesley	103	65	35	14	13
Limagrain Cereal Seeds	LCS Chrome	99	64	38	17	13
Husker Genetics	Robidoux	98	65	36	14	12
Westbred	Aspen	98	64	33	14	13
WestBred	WB4458	98	65	36	13	15
AgriPro Syngenta	SY Flint	98	65	35	14	13
----	Mace	97	64	36	16	13
-----	NI10718W	96	64	36	14	12
Husker Genetics	Ruth	93	67	37	14	13
PlainsGold	Avery	91	62	30	14	11
CRFW	Cowboy	90	65	36	14	12
Limagrain Cereal Seeds	LCS Mint	87	67	37	13	12
-----	N11MD2166W	86	65	37	15	12
Limagrain Cereal Seeds	LCH14-77	86	65	37	14	13
-----	NE12561	85	66	36	14	12
-----	NI12702W	84	67	37	13	11
PlainsGold	Snowmass	80	66	32	13	12
WestBred	WB-Cedar	79	65	32	13	14
-----	N13MD2589W	73	68	40	15	14
Average of all entries		98	65	35	14	12
Difference required for significance at 5%		15	4	4	NS	1

IRRIGATED WHEAT VARIETY TESTS 2014 - 2017

Brand	Variety	Grain Yield (bu/a)	Bushel Weight (lb/bu)	Kernel Weight (000/lb)	Grain Protein (%)	Plant Height (inches)
Two year averages						
WestBred	WB4303	108	58	15	14	34
AgriPro Syngenta	SY Wolf	102	61	15	13	35
WestBred	WB-Grainfield	100	61	16	13	35
WestBred	Winterhawk	100	61	14	13	37
AgriPro Syngenta	SY Sunrise	99	61	14	14	34
Limagrain Cereal Seeds	LCH13NEDH-14-71*	98	61	15	13	37
Dyna-Gro Seeds	Long Branch	95	59	14	13	36
WestBred	WB4458	94	61	14	15	36
Limagrain Cereal Seeds	LCS Chrome	94	60	18	14	37
----	Wesley	90	61	14	14	35
AgriPro Syngenta	SY Flint	90	60	15	14	35
Husker Genetics	Robidoux	89	61	15	13	36
-----	NI10718W	89	60	14	13	36
PlainsGold	Avery	89	58	15	13	33
CRFW	Cowboy	86	59	16	14	36
Husker Genetics	Ruth	86	62	14	14	37
Limagrain Cereal Seeds	LCS Mint	84	62	14	13	37
WestBred	WB-Cedar	82	61	13	14	33
Average of all entries		93	60	15	14	35
Difference required for significance at 5%		14	2	1.5	NS	3
Three year averages						
WestBred	WB-Grainfield	109	60	15	14	35
AgriPro Syngenta	SY Wolf	106	60	14	14	35
WestBred	WB4458	103	60	13	15	36
----	Wesley	100	59	14	14	35
WestBred	WB-Cedar	96	60	13	14	33
Husker Genetics	Ruth	96	60	14	14	37
Husker Genetics	Robidoux	96	60	15	14	36
CRFW	Cowboy	95	59	15	14	36
Limagrain Cereal Seeds	LCS Mint	93	61	14	14	37
Average of all entries		99	60	14	14	35
Difference required for significance at 5%		NS	NS	1.0	NS	NS
Four year averages						
AgriPro Syngenta	SY Wolf	108	60	14	14	33
----	Wesley	101	60	14	14	33
WestBred	WB-Cedar	99	61	13	14	31
Husker Genetics	Robidoux	96	60	15	14	33
Average of all entries		101	60	14	14	32
Difference required for significance at 5%		NS	NS	1.2	NS	NS

2017 WHEAT GRAIN YIELD RANK AT ALL LOCATIONS TESTED (1/2)

Brand	Variety	Locations													
		Saline	Saunders	Lancaster	Washington	Clay	Keith	Red Willow	Lincoln	Perkins	Cheyenne	Deuel/Kimball	Banner/SB	Box Butte RF	Chase Irr
Westbred	Aspen	-	-	-	-	-	-	-	-	-	-	-	-	-	98
PlainsGold	Avery	-	-	-	-	-	73	56	59	48	87	72	45	83	91
AgriPro Syngenta	Bob Dole	-	-	-	-	71	-	-	-	-	-	-	-	-	-
NuPride	Camelot	108	73	62	97	-	-	-	-	-	75	62	38	69	-
CRFW	Cowboy	-	-	-	-	-	-	-	-	-	66	68	54	76	90
CROPLAN by WinField	EXP 26-16	-	-	-	-	-	77	56	64	49	72	63	47	59	107
CROPLAN by WinField	EXP 69-16	-	-	-	-	-	80	72	76	42	90	68	52	77	116
Husker Genetics	Freeman	114	87	96	109	70	75	65	68	46	87	68	43	82	-
----	Goodstreak	-	-	-	-	-	-	-	-	-	61	60	50	65	-
----	Infinity CL	-	-	-	-	-	69	51	57	43	75	60	44	63	-
PlainsGold	Langin	-	-	-	-	-	81	65	65	52	102	75	53	86	111
Limagrain Cereal Seeds	LCH13NEDH-14-71*	117	96	104	130	85	68	95	71	46	83	65	46	68	112
Limagrain Cereal Seeds	LCH14-77	-	-	-	-	-	66	71	53	40	-	-	-	-	86
Limagrain Cereal Seeds	LCS Chrome	102	95	112	108	81	63	105	74	32	72	53	44	66	99
Limagrain Cereal Seeds	LCS Mint	-	-	-	-	78	72	58	60	54	81	69	45	80	87
Dyna-Gro Seeds	Long Branch	120	92	90	101	78	68	73	66	41	84	74	49	77	111
----	Mace	-	-	-	-	58	56	80	49	40	69	62	46	76	97
-----	N11MD2166W	-	-	-	-	69	68	50	60	31	73	74	45	70	86
-----	N13MD2589W	81	65	55	82	52	55	66	50	38	57	47	46	50	73
-----	NE10478-1	119	96	92	104	79	68	83	63	54	81	66	53	71	-
-----	NE12561	120	105	111	126	79	77	70	64	34	71	65	46	63	85
-----	NE12589	-	-	-	-	-	-	-	-	-	79	66	47	82	-
-----	NE13515	111	89	99	112	77	72	75	56	43	68	66	52	66	-
-----	NE13604	109	87	85	104	84	79	79	65	44	76	70	50	76	-
-----	NI10718W	114	73	77	94	69	67	61	55	41	80	62	50	60	96
-----	NI12702W	106	94	99	115	79	61	75	59	46	71	56	45	59	84
-----	NI13706	117	90	107	115	72	67	75	63	53	80	64	51	76	105
-----	NW13493	113	95	112	123	78	78	66	68	43	80	65	46	74	-
-----	NW13570	111	90	114	122	81	76	87	75	45	80	65	51	75	-

TABLE CONTINUED ON NEXT PAGE

2017 WHEAT GRAIN YIELD RANK AT ALL LOCATIONS TESTED (2/2)

Brand	Variety					Clay	Keith	Red Willow	Lincoln	Perkins	Cheyenne	Deuel/Kimball	Banner/SB	Box Butte RF	Chase Irr
		Saline	Saunders	Lancaster	Washington										
South Dakota AES	Oahe	103	86	77	113	-	-	-	-	-	-	-	-	-	
Kansas Wheat Alliance	Oakley CL	-	-	-	-	-	79	68	61	40	-	-	-	-	
Husker Genetics	Overland	109	85	77	93	76	63	62	59	45	77	69	44	71	
----	Panhandle	-	-	-	-	-	-	-	-	-	75	58	51	65	
----	Pronghorn	-	-	-	-	-	-	-	-	-	74	66	47	69	
South Dakota AES	Redfield	109	77	78	98	-	-	-	-	-	-	-	-	-	
Husker Genetics	Robidoux	-	-	-	-	-	66	62	67	58	89	69	45	85	
-----	Ruth	123	80	101	110	79	78	108	64	44	82	71	48	80	
----	Scout 66	82	57	45	68	36	56	49	43	29	66	54	44	58	
Husker Genetics	Settler CL	-	-	-	-	-	74	58	51	39	71	67	47	63	
PlainsGold	Snowmass	-	-	-	-	-	77	71	51	33	69	68	42	76	
AgriPro Syngenta/CRW	Spur	-	-	-	-	-	-	-	-	-	35	67	49	41	
AgriPro Syngenta	SY Flint	-	-	-	-	-	62	77	59	40				98	
AgriPro Syngenta	SY Monument	-	-	-	-	79	74	72	71	49	79	68	49	66	
AgriPro Syngenta	SY Sunrise	-	-	-	-	-	54	85	70	49	-	-	-	108	
AgriPro Syngenta	SY Wolf	114	93	108	130	70	73	87	61	41	72	62	49	65	
Limagrain Cereal Seeds	T158	-	-	-	-	-	74	62	63	60	87	62	45	70	
Kansas Wheat Alliance	Tatanka	-	-	-	-	-	69	75	63	46	-	-	-	-	
----	Turkey	75	53	37	66	44	48	36	35	20	51	51	44	46	
-----	Warhorse	-	-	-	-	-	-	-	-	-	44	58	41	64	
WestBred	WB4269	113	104	114	125	-	-	-	-	-	-	-	-	-	
WestBred	WB4303	105	87	109	134	-	-	-	-	-	-	-	-	123	
WestBred	WB4458	111	96	112	140	68	66	69	53	44	-	-	-	98	
WestBred	WB4462	-	-	-	-	-	81	81	68	47	83	70	52	81	
WestBred	WB4721	114	98	116	119	84	66	80	59	35	72	58	43	69	
WestBred	WB-Cedar	97	93	98	135	-	-	-	-	-	-	-	-	79	
WestBred	WB-Grainfield	126	99	121	114	83	74	82	65	35	90	66	47	74	
----	Wesley	94	70	69	102	69	58	61	59	32	69	59	49	66	
WestBred	Winterhawk	-	-	-	-	-	63	75	66	43	77	70	42	76	
Kansas Wheat Alliance	Zenda	111	98	104	135	68	-	-	-	-	-	-	-	-	

2017 WHEAT PROTEIN RANK AT ALL LOCATIONS TESTED (1/2)

Brand	Variety	Saline	Saunders	Lancaster	Washington	Clay	Keith	Red Willow	Lincoln	Perkins	Cheyenne	Deuel/Kimball	Banner/SB	Box Butte RF	Chase Irr
Westbred	Aspen	-	-	-	-	-	-	-	-	-	-	-	-	-	13
PlainsGold	Avery	-	-	-	-	-	11	13	11	15	11	12	11	11	11
AgriPro Syngenta	Bob Dole	-	-	-	-	14	-	-	-	-	-	-	-	-	-
NuPride	Camelot	14	14	15	14	-	-	-	-	-	14	12	12	12	-
CRFW	Cowboy	-	-	-	-	-	-	-	-	-	14	11	11	12	12
CROPLAN by WinField	EXP 26-16	-	-	-	-	-	12	14	13	15	13	12	11	12	12
CROPLAN by WinField	EXP 69-16	-	-	-	-	-	13	14	11	15	13	13	11	13	11
Husker Genetics	Freeman	13	13	14	13	13	12	13	13	14	13	13	11	12	-
----	Goodstreak	-	-	-	-	-	-	-	-	-	13	13	11	12	-
----	Infinity CL	-	-	-	-	-	12	13	12	16	12	13	11	12	-
PlainsGold	Langin	-	-	-	-	-	11	14	12	14	11	11	9	10	11
Limagrain Cereal Seeds	LCH13NEDH-14-71*	13	13	13	14	13	12	14	12	16	13	12	11	12	12
Limagrain Cereal Seeds	LCH14-77	-	-	-	-	-	12	14	13	15	-	-	-	-	13
Limagrain Cereal Seeds	LCS Chrome	14	14	14	15	14	12	15	13	17	13	15	12	12	13
Limagrain Cereal Seeds	LCS Mint	-	-	-	-	12	12	13	12	15	13	11	10	11	12
Dyna-Gro Seeds	Long Branch	13	14	14	14	13	11	15	12	16	13	13	11	12	12
----	Mace	-	-	-	-	14	12	16	13	15	13	13	12	13	13
-----	N11MD2166W	-	-	-	-	15	11	14	14	16	13	11	10	12	12
-----	N13MD2589W	16	16	18	17	16	15	16	14	17	14	13	12	14	14
-----	NE10478-1	13	14	15	14	14	12	15	12	15	13	12	10	11	-
-----	NE12561	13	14	16	14	14	11	15	12	15	13	13	11	11	12
-----	NE12589	-	-	-	-	-	-	-	-	-	13	12	11	12	-
-----	NE13515	14	14	15	15	14	13		13	16	15	14	12	14	-
-----	NE13604	14	14	14	15	14	12	14	13	15	12	12	12	12	-
-----	NI10718W	13	14	15	14	13	12	14	12	15	13	12	10	12	12
-----	NI12702W	14	14	15	15	14	13	14	13	16	13	14	11	12	11
-----	NI13706	13	14	16	14	15	13	15	13	15	13	13	11	12	13
-----	NW13493	13	14	14	14	14	12	14	12	15	13	13	11	12	-
-----	NW13570	13	14	14	14	14	12	14	13	16	13	13	11	12	-

TABLE CONTINUED ON NEXT PAGE

2017 WHEAT PROTEIN RANK AT ALL LOCATIONS TESTED (2/2)

Brand	Variety	Saline	Saunders	Lancaster	Washington	Clay	Keith	Red Willow	Lincoln	Perkins	Cheyenne	Deuel/Kimball	Banner/SB	Box Butte RF	Chase Irr
South Dakota AES	Oahe	13	14	14	14	-	-	-	-	-	-	-	-	-	-
Kansas Wheat Alliance	Oakley CL	-	-	-	-	-	12	14	13	16	-	-	-	-	-
Husker Genetics	Overland	14	13	14	13	13	12	14	12	15	13	13	12	12	-
----	Panhandle	-	-	-	-	-	-	-	-	-	13	14	11	13	-
----	Pronghorn	-	-	-	-	-	-	-	-	-	12	12	10	12	-
South Dakota AES	Redfield	14	14	15	14	-	-	-	-	-	-	-	-	-	-
Husker Genetics	Robidoux	-	-	-	-	-	11		13	16	13	13	11	11	12
-----	Ruth	12	13	14	13	13	12	14	14	16	13	13	11	12	13
----	Scout 66	14	15	16	16	15	13	15	13	16	13	14	11	12	-
Husker Genetics	Settler CL	-	-	-	-	-	11	14	12	15	13	11	11	12	-
PlainsGold	Snowmass	-	-	-	-	-	11	13	14	15	12	11	11	11	12
AgriPro Syngenta/CRW	Spur	-	-	-	-	-	-	-	-	-	14	12	10	13	-
AgriPro Syngenta	SY Flint	-	-	-	-	-	12	14	14	15	-	-	-	-	13
AgriPro Syngenta	SY Monument	-	-	-	-	13	12	15	12	15	12	11	10	11	-
AgriPro Syngenta	SY Sunrise	-	-	-	-	-	13	14	13	15	-	-	-	-	13
AgriPro Syngenta	SY Wolf	13	14	15	15	14	12	14	15	16	13	12	10	13	12
Limagrain Cereal Seeds	T158	-	-	-	-	-	11	15	13	15	12	13	11	12	-
Kansas Wheat Alliance	Tatanka	-	-	-	-	-	11	14	12	14	-	-	-	-	-
----	Turkey	15	15	16	15	14	13	15	12	16	14	14	10	14	-
-----	Warhorse	-	-	-	-	-	-	-	-	-	15	14	11	14	-
WestBred	WB4269	13	13	15	13	-	-	-	-	-	-	-	-	-	-
WestBred	WB4303	14	13	14	14	-	-	-	-	-	-	-	-	-	13
WestBred	WB4458	14	12	16	13	14	13	16	14	16	-	-	-	-	15
WestBred	WB4462	-	-	-	-	-	11	15	13	16	12	12	11	12	-
WestBred	WB4721	14	14	15	14	14	13	15	13	16	14	13	11	12	-
WestBred	WB-Cedar	15	13	16	13	-	-	-	-	-	-	-	-	-	14
WestBred	WB-Grainfield	12	12	13	13	13	11	14	12	16	13	12	10	12	11
----	Wesley	14	15	15	14	13	12	15	13	17	14	13	10	13	13
WestBred	Winterhawk	-	-	-	-	-	13	15	14	15	13	12	11	11	12
Kansas Wheat Alliance	Zenda	13	13	14	13	13	-	-	-	-	-	-	-	-	-

2017 WHEAT BUSHEL WEIGHT RANK AT ALL LOCATIONS TESTED (1/2)

Brand	Variety	Saline	Saunders	Lancaster	Washington	Keith	Lincoln	Perkins	Cheyenne	Deue/Kimball	Banner/SB	Box Butte RF	Chase Irr
Westbred	Aspen	-	-	-	-	-	-	-	-	-	-	-	64
PlainsGold	Avery	-	-	-	-	58	44	54	58	62	59	59	62
NuPride	Camelot	59	53	49	57	-	-	-	57	62	60	57	-
CRFW	Cowboy	-	-	-	-	-	-	-	56	60	60	52	65
CROPLAN by WinField	EXP 26-16	-	-	-	-	59	48	54	57	62	59	54	67
CROPLAN by WinField	EXP 69-16	-	-	-	-	58	47	54	59	62	60	59	66
Husker Genetics	Freeman	58	52	53	54	57	47	53	57	61	59	57	-
----	Goodstreak	-	-	-	-	-	-	-	58	62	60	55	-
----	Infinity CL	-	-	-	-	58	45	53	58	61	60	57	-
PlainsGold	Langin	-	-	-	-	57	46	53	59	62	60	58	64
Limagrain Cereal Seeds	LCH13NEDH-14-71*	62	57	54	59	58	48	54	60	62	59	57	65
Limagrain Cereal Seeds	LCH14-77	-	-	-	-	59	46	53	-	-	-	-	65
Limagrain Cereal Seeds	LCS Chrome	59	55	55	57	59	48	53	57	60	60	57	64
Limagrain Cereal Seeds	LCS Mint	-	-	-	-	60	42	55	60	63	60	59	67
Dyna-Gro Seeds	Long Branch	59	52	54	56	58	47	53	57	61	60	56	65
----	Mace	-	-	-	-	57	40	51	58	60	60	55	64
-----	N11MD2166W	-	-	-	-	56	44	54	57	61	60	54	65
-----	N13MD2589W	62	58	53	59	62	45	55	61	62	60	50	68
-----	NE10478-1	62	56	55	56	57	46	55	59	62	60	58	-
-----	NE12561	63	56	57	58	59	49	56	59	63	60	58	66
-----	NE12589	-	-	-	-	-	-	-	59	63	59	57	-
-----	NE13515	63	57	58	60	59	46	54	59	62	60	58	-
-----	NE13604	61	57	54	59	58	55	54	58	61	59	56	-
-----	NI10718W	60	52	52	55	57	40	52	59	62	59	56	64
-----	NI12702W	63	59	58	60	61	52	56	61	63	60	58	67
-----	NI13706	62	55	58	56	58	51	53	60	63	60	60	67
-----	NW13493	61	57	58	58	60	44	55	60	62	60	58	-
-----	NW13570	59	54	55	58	58	45	53	57	61	59	53	-
South Dakota AES	Oahe	60	58	56	59	-	-	-	-	-	-	-	-

TABLE CONTINUED ON NEXT PAGE

2017 WHEAT BUSHEL WEIGHT RANK AT ALL LOCATIONS TESTED (2/2)

Brand	Variety	Saline	Saunders	Lancaster	Washington	Keith	Lincoln	Perkins	Cheyenne	Deue/Kimball	Banner/SB	Box Butte RF	Chase Irr
Kansas Wheat Alliance	Oakley CL	-	-	-	-	60	44	54	-	-	-	-	-
Husker Genetics	Overland	61	55	53	57	58	46	52	58	62	59	56	-
----	Panhandle	-	-	-	-	-	-	-	57	61	59	53	-
----	Pronghorn	-	-	-	-	-	-	-	59	62	60	58	-
South Dakota AES	Redfield	61	57	53	57	-	-	-	-	-	-	-	-
Husker Genetics	Robidoux	-	-	-	-	58	46	51	59	63	60	58	65
-----	Ruth	61	53	56	57	58	47	52	59	62	60	59	67
----	Scout 66	61	55	50	57	60	40	55	60	62	59	55	-
Husker Genetics	Settler CL	-	-	-	-	58	39	52	58	61	60	56	-
PlainsGold	Snowmass	-	-	-	-	59	45	53	47	62	60	58	66
AgriPro Syngenta/CRW	Spur	-	-	-	-	-	-	-	52	57	60	45	-
AgriPro Syngenta	SY Flint	-	-	-	-	59	39	55	-	-	-	-	65
AgriPro Syngenta	SY Monument	-	-	-	-	57	47	53	57	61	60	54	-
AgriPro Syngenta	SY Sunrise	-	-	-	-	58	48	53	-	-	-	-	64
AgriPro Syngenta	SY Wolf	61	53	55	54	59	44	52	58	62	60	54	66
Limagrain Cereal Seeds	T158	-	-	-	-	60	47	55	60	62	60	57	-
Kansas Wheat Alliance	Tatanka	-	-	-	-	59	43	55	-	-	-	-	-
----	Turkey	59	55	49	57	58	43	54	57	61	59	49	-
-----	Warhorse	-	-	-	-	-	-	-	54	59	59	51	-
WestBred	WB4269	62	56	56	56	-	-	-	-	-	-	-	-
WestBred	WB4303	57	51	55	54	-	-	-	-	-	-	-	63
WestBred	WB4458	61	56	56	57	58	40	54	-	-	-	-	65
WestBred	WB4462	-	-	-	-	59	51	53	59	62	59	58	-
WestBred	WB4721	62	57	59	59	60	52	55	60	63	60	58	-
WestBred	WB-Cedar	61	56	57	57	-	-	-	-	-	-	-	65
WestBred	WB-Grainfield	62	54	56	58	59	47	53	58	63	59	58	65
----	Wesley	59	52	46	56	56	43	51	56	61	60	54	65
WestBred	Winterhawk	-	-	-	-	58	49	52	56	62	60	55	66
Kansas Wheat Alliance	Zenda	62	58	57	59	-	-	-	-	-	-	-	-

2017 WINTER TRITICALE VARIETY TRIAL MEAD, LINCOLN, AND SIDNEY

Entry Name	Grain Yield (lb/ac)				Rank	Plant Height (in)	Heading Date (After Jan. 1)
	Mead	Lincoln	Sidney	Average			
NT16402	4399	5315	4049	4588	1	48	134
NT15406	4011	5085	3919	4338	2	48	134
NT12404-1	4204	5344	3459	4336	3	49	136
NT12425-1	3512	4256	4319	4029	4	45	136
NT13416	3776	4454	3714	3981	5	54	137
NT12403	3613	4532	3430	3858	6	50	136
NT15428	3563	3960	3866	3796	7	51	136
NT14407	3552	4107	3487	3715	8	52	135
NT16407	4268	3143	3668	3693	9	56	141
NT15440	3677	4074	3313	3688	10	54	140
NT16408	3008	4326	3529	3621	11	48	136
NT16403	3236	3691	3867	3598	12	54	140
NT07403	3090	4124	3577	3597	13	47	134
NT11428	3482	3421	3855	3586	14	57	139
NT09404-1	3073	3937	3589	3533	15	54	139
NT16401	3425	3991	3144	3520	16	52	137
NT12406	3080	3318	3931	3443	17	53	139
NT06422	3116	3517	3573	3402	18	56	136
NT06427	2881	3720	3368	3323	19	48	138
NT05421	3439	3624	2884	3316	20	55	139
NT15421	2989	3796	2864	3216	21	53	137
NT16404	3004	2992	3447	3148	22	60	138
NT09423	2588	2830	3407	2942	23	49	140
NT15425	2592	3471	2633	2899	24	58	137
NT14433	2860	2744	2943	2849	25	61	139
NT16406	3148	2152	2766	2689	26	58	142
OVERLAND	2741	2400	2850	2664	27	42	141
NT16405	2479	2153	2925	2519	28	58	140
NE422T	2904	2042	2409	2452	29	65	145
NT441	2623	1918	2466	2336	30	61	144
Average all entries	3278	3615	3375	3422	-	53	138
Diff. required for sig. 5%	671	558	711	-	-	-	-

2017 WINTER BARLEY VARIETY TRIAL MEAD-NE, LINCOLN-NE, AND SIDNEY-NE

Entry Name	Yield (Lb/ac)					Sidney		
	Mead	Lincoln	Sidney	Average	Rank	Bushel Wt (lb/bu)	Heading Date (Date After Jan. 1)	Avg Plant Height (in)
NB15417	6487	6181	3488	5385	1	46	132	35
NB15441	6938	5485	3692	5372	2	47	132	36
NB15415	6489	5910	3649	5349	3	48	133	36
NB15420	6086	6348	3396	5277	4	48	133	37
NB11414	6054	5715	3945	5238	5	47	132	34
NB15442	5966	5837	3603	5135	6	46	133	36
NB12434	6152	5731	3252	5045	7	49	132	36
NB14422	4998	6126	3893	5006	8	48	131	37
NB11416	5610	5853	3346	4936	9	48	134	37
NB14433	5369	5950	3461	4927	10	48	136	36
NB14404	6100	5588	2766	4818	11	48	131	36
NB12437	5991	5064	3341	4799	12	47	134	35
NB16433	5294	5640	3462	4799	12	49	132	36
NB15419	5800	5414	3166	4793	14	49	131	37
NB15443	5368	5753	3162	4761	15	48	131	36
NB14428	5492	5629	2972	4698	16	48	134	40
NB16411	4963	5172	3837	4657	17	47	135	34
NB10444	5364	4830	3602	4599	18	48	132	34
NB14405	5067	4891	3803	4587	19	47	132	35
NB13435	4915	4824	3953	4564	20	48	132	34
NB99845	4774	5599	3304	4559	21	48	131	35
NB14430	5546	5589	2542	4559	21	49	133	33
NB16412	5032	5169	3472	4558	23	46	131	34
NB14429	5346	5672	2631	4550	24	48	131	36
NB16437	5325	4855	3442	4541	25	46	131	36
NB15440	4890	4688	3968	4515	26	47	132	35
NB14412	4852	5193	3460	4502	27	47	132	36
NB12419	4785	4959	3738	4494	28	48	131	36
NB11430	5131	5337	2904	4457	29	48	132	36
NB15414	4390	5634	3345	4456	30	48	131	37
NB16409	4899	5625	2825	4450	31	47	132	37
NB16429	5366	4555	3352	4424	32	49	131	37
NB13401	5513	4447	3253	4404	33	48	130	37
NB12425	4226	5265	3694	4395	34	47	131	39
NB16420	4585	4444	3626	4218	35	48	131	37
P-713	5096	4592	2945	4211	36	47	132	37
NB16434	4879	4965	2503	4116	37	49	133	36
P-954	4664	4402	2912	3993	38	49	132	36
NB15439	4505	4865	2294	3888	39	49	131	36
P-721	4614	4094	2937	3882	40	48	131	39
Avg. all entries	5323	5297	3323	4648	-	48	132	36
Diff for sig. 5%	821	874	937	-	-	2	-	-



UNIVERSITY OF NEBRASKA VARIETY TESTING PROGRAM

<http://cropwatch.unl.edu/varietytest>

PROVIDED BY

University of Nebraska-Lincoln Extension
Institute of Agriculture and Natural Resources
Department of Agronomy & Horticulture

Extension is a Division of the Institute of Agriculture and Natural Resources at the University of Nebraska-Lincoln cooperating with the Counties and the United States Department of Agriculture.

University of Nebraska-Lincoln Extension educational programs abide with the nondiscrimination policies of the University of Nebraska-Lincoln and the United States Department of Agriculture.

© 2017 University of Nebraska Board of Regents. All rights reserved.

UNIVERSITY OF
Nebraska
Lincoln