

2016 FALL SEED GUIDE

Brought to you by the
University of Nebraska Variety
Testing Program

- University of Nebraska–Lincoln Extension
- Institute of Agriculture and Natural Resources
- Department of Agronomy & Horticulture

WELCOME TO THE 2016 FALL SEED GUIDE

Crops included in this guide are winter wheat, winter barley, and triticale. You may receive this guide in the mail or through the University of Nebraska Extension network. The data and other information this guide is based on can be found at the University of Nebraska Variety Testing web site: <http://cropwatch.unl.edu/varietytest>. Additional wheat variety information may be found at the wheat variety virtual tour web site: <http://cropwatch.unl.edu/wheat/virtual> or the wheat crop web site: <http://cropwatch.unl.edu/wheat>.

The overall winter wheat growing conditions for the past season were very good. Precipitation was greater than in previous years and rainfall received was distributed evenly throughout the season. Disease and pest conditions were milder than what was observed last year. For most variety testing sites, cooperating farmers used more fertilizer and herbicide inputs compared to the earlier years. The favorable growing conditions and increased management inputs (at least for test locations) may have resulted in record-high yield reports at all state variety testing locations.

Crop emergence was reported poor to average for most of the sites in the west due to dry soil conditions at planting. Fall and early spring drought significantly influenced crop stand in the west and some sites in the east. This poor start was compensated by good growing conditions in the spring and summer. Nevertheless, yields were affected by late season storm and hail at some locations. All plots were harvested except the trial in Red Willow County. Yield and quality parameters were very good for all of the test plots compared to earlier years.

I hope you will find this seed guide helpful in selecting winter wheat varieties for your wheat operation or use the data to advise your clientele in choosing the right variety to grow.

- Teshome Regassa, Ph. D.

TABLE OF CONTENTS

| | |
|--|-------|
| Welcome Statement..... | 2 |
| Table of Contents..... | 2 |
| Authors and Acknowledgment..... | 3 |
| Winter Wheat Performance Summary..... | 4–5 |
| Wheat Trial Location Map..... | 6 |
| Monthly Precipitation at Trial Locations..... | 6 |
| Location Summary and Overview Table..... | 7 |
| Soil Type, Previous Crop, Fertilizers and Herbicides/Fungicides Applied..... | 8 |
| Entries and Company Information..... | 9 |
| Wheat Characteristics Tables..... | 10–15 |
| Wheat Variety Tests..... | 16–37 |
| Wheat Rankings..... | 38–43 |
| Winter Triticale Variety Tests..... | 44–45 |
| Winter Barley Variety Tests..... | 46–47 |

UNL EXTENSION CIRCULAR 103

FALL SEED GUIDE

- August 2016 -

AUTHORS

Teshome Regassa.....Department of Agronomy/Horticulture; Lincoln
P. Stephen Baenziger.....Department of Agronomy/Horticulture; Lincoln
Rodrigo Werle.....West Central Research and Extension Center; North Platte
Dipak Santra.....Department of Agronomy/Horticulture; Scottsbluff

ACKNOWLEDGMENTS

This circular is a progress report of variety trials conducted by personnel of the Agronomy Department, West Central, and Panhandle Research and Extension Centers and their associated agricultural laboratories. Conduct of experiments and publication of results is a joint effort of the Agricultural Research Division and the Cooperative Extension Service. Tests were supported in part by fees paid by commercial seed companies and the Nebraska Wheat Board.

Special acknowledgment is made to farmer cooperators who furnished land for experiments; also to Extension Educators and others who assisted with the tests. The authors wish to acknowledge the assistance of the technical support staff: Brian Maust, Greg Dorn, Richard Little, Jeff Golus, Vern Florke, Mitch Montgomery, and Liberty Daniels. Their help is vital to this research.

We would like to thank the Nebraska Wheat Board for contributing wheat check-off money and the Nebraska Agricultural Statistics Service for compiling data on varieties and production of wheat.

This circular reports data from winter wheat trials conducted throughout Nebraska. Entries include commercial varieties and promising experimental lines from Nebraska, surrounding states, and private breeders. The state has been divided into four districts for the purposes of variety testing (Panhandle, West Central, South Central, and Southeast).

There were 15 trials planted across Nebraska in the fall of 2015. Data from the Red Willow Rainfed site was not collected due hail damage. Names of cooperators, trial locations, planting dates, harvest dates, highest location mean yield, and mean of top five varieties are shown in Table A. Location specific information such as soil type, tillage, previous crop, and fertilizer applications when available are shown in Table B. Plot sizes varied with location. Six row wide and 20 to 35 feet long plots were planted across locations. All tests were direct combined. Entries were replicated 3 to 6 times.

Protein and seed size data were collected from two replicates at each location. The protein data was combined within each district and reported in the district tables. Protein was determined from whole grain using a Perten DA 7250 Near Infrared Spectrometer. Please refer to the Variety Test Home Page for individual site yields, disease score, and other relevant information.

WINTER WHEAT PERFORMANCE

According to the National Agricultural Statistics Service, winter wheat was sown on 1.3 million acres. 1.2 million acres were harvested producing a projected 60 million bushels of grain. The average winter wheat yield of Nebraska for all wheat harvested during the summer of 2016 was projected to be 49 bushels per acre (bu/a). Given the excellent growing conditions at most of the testing sites yields were higher (50 bu/ac) than projected. Winter wheat yields and production from the previous 10 years are reported below.

Average Nebraska Winter Wheat Yield (all practices)

| Year | 2007 | 2008 | 2009 | 2010 | 2011 | 2012 | 2013 | 2014 | 2015 | 2016 |
|----------------------------------|-------|-------|------|-------|-------|-------|-------|-------|------|------|
| Yield (bu/a) | 43 | 44 | 48 | 43 | 44 | 42 | 35 | 49 | 42 | 50 |
| NE Total Production (million bu) | 84.28 | 73.48 | 76.8 | 64.07 | 65.25 | 55.44 | 41.76 | 71.05 | 54.6 | 60 |

Source: National Agricultural Statistics Service (<http://www.nass.usda.gov>)

Yielding ability of different varieties cannot be measured with absolute accuracy because of variations in local disease incidence, soil fertility, seasonal rainfall or moisture, and other factors. For this reason, small differences in yield have no significance. Unless the difference in yield of two varieties is greater than the difference required for significance shown in the tables, little confidence can be placed in the superiority of one variety over the other for measured traits in that particular test. These differences are shown at the 5% level, meaning that differences as large or larger could be expected through chance alone in 1 of 20 trials (5%). Even though two varieties are not statistically different, there may be other factors which influence the choice of one over the other. Factors such as disease resistance, grain quality, agronomic desirability or availability of seed may influence that decision.

Complementary varieties are important when selecting additional varieties to grow. One definition of complementary varieties is that they come from diverse parentages. In order to help select varieties with diverse parentages, the related families of many varieties are included in the characteristics table.

RESULTS AT INDIVIDUAL LOCATIONS

Southeast:

There were three rainfed trials conducted in the Southeast District at Saunders, Lancaster, and Saline counties. Site specific management and previous crops are shown in Table B.

- The Saline County Rainfed trial was planted on October 23rd into soybean stubble. 100 lbs of 11-52-0 and 116 lbs/ac of urea was applied in the fall followed by 50 lb/ac of urea in the spring. Plots were harvested on June 30th with a top yield of 79 bu/ac and an average yield of 67 bu/ac. 2,4-D was sprayed at 0.5 pt/ac and a 4 oz/ac Folicur was sprayed.
- The Saunders County Rainfed trial was planted on October 5th, previous crop was oats. A total of 80 lb UAN was applied. Plots were harvested on July 1st with a top yield of 92 bu/ac and an average yield of 71 bu/ac. 0.4 oz/ac Finesse herbicide was applied.
- The Lancaster County Rainfed trial trial was planted on October 5th on soybean ground. 125 lb/ac N was applied as fertilizer. Plots were harvested on July 5th with a top yield of 78 bu/ac and an average yield of 60 bu/ac. 0.4 oz Finesse, 32 oz Prowl H2O + 16 oz 2,4-D herbicide was applied.
- The Clay County Rainfed trial was planted on September 18th. Plots were planted September 18th and harvested on July 13th with a top yield of 68 bu/ac and an average yield of 44 bu/ac. A total of 60 lb/ac 11-52-0 was applied as a starter and 50 lbs/ac N was applied as top-dress in the spring.

South-Central:

- There was one rainfed trial conducted in the South Central District at Clay Center. The Clay County Rainfed trial was planted on September 18th and harvested on July 13th with a top yield of 68 bu/ac and an average yield of 44 bu/ac. A total of 100 lb/ac 11-52-0 was applied as a starter.

West Central:

Six locations were planted in the West Central District. One irrigated trial was planted in Chase County. Rainfed trials were planted in Red Willow, Furnas, Keith, Lincoln, and Perkins counties. Red Willow plots were not harvested due to hail damage. All rainfed sites were left fallow during the previous growing season with corn as the crop before (Table B).

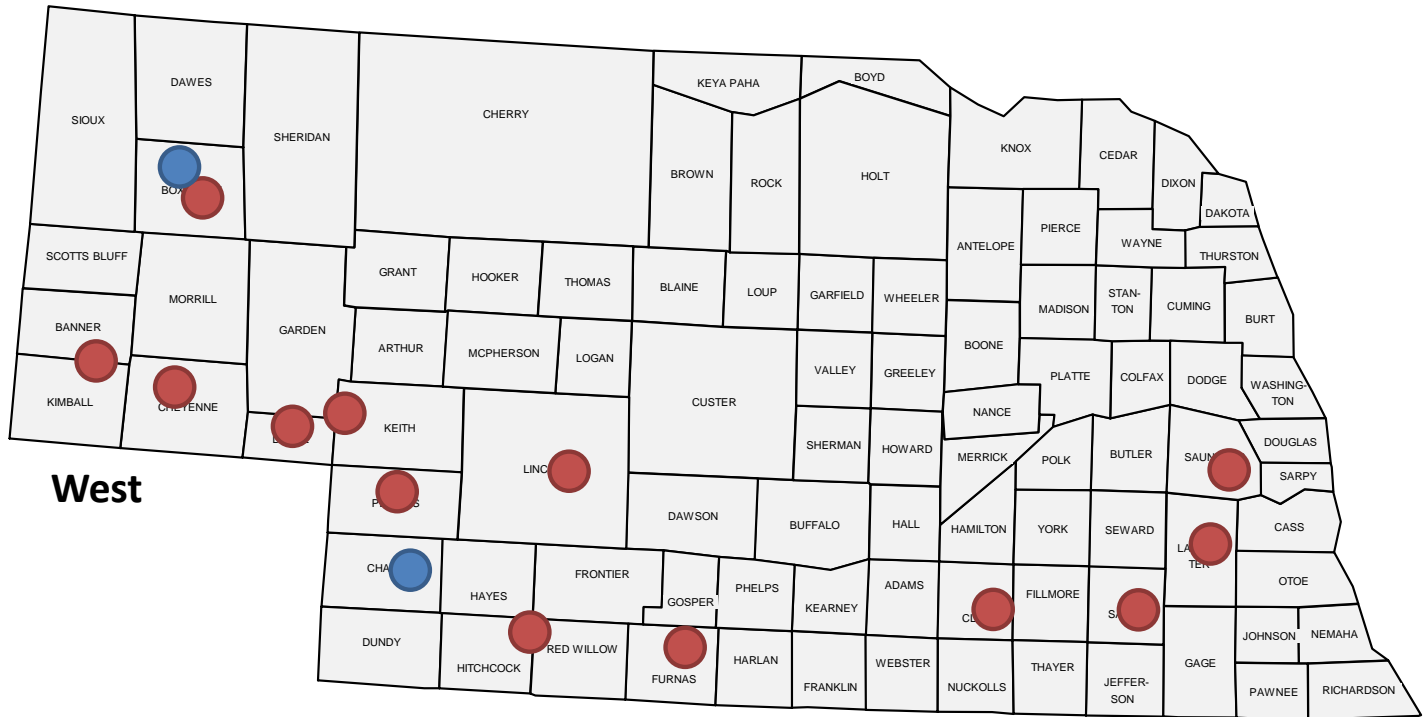
- The Chase County Irrigated trial was planted on October 8th into no-till fallow ground. 30 lb/ac of 11-52-0 was applied as starter. Plots were harvested on July 12th with a top yield of 105 bu/ac and an average yield of 81 bu/ac.
- The Keith County Rainfed trial was planted on September 21st into no-till fallow ground. 60 lb/ac of 11-52-0 was applied as starter with additional 50 lb/ac of N applied in the spring as top-dress. Plots were harvested on July 8th with a top yield of 73 bu/ac and an average yield of 60 bu/ac.
- The Furnas County Rainfed trial was planted on September 28th into no-till fallow ground. 40 lb/ac of 11-52-0 was applied as starter and 100 lb/ac N was applied as top-dress in the spring. Plots were harvested on July 11th with a top yield of 107 bu/ac and an average yield of 94 bu/ac.
- The Red Willow County Rainfed trial was planted on September 22th. Unfortunately this site was not harvested due to hail damage.
- The Lincoln County Rainfed trial was planted on September 28th into no-till fallow ground. Prior to planting 60 lb/ac of 32-0-0 was applied and additional 20 lb/ac of 11-52-0 was applied as a starter. Plots were harvested on July 7th with a top yield of 96 bu/ac and an average yield of 85 bu/ac. Amber herbicide at 0.35 oz/ac, 4.0 oz/ac Tebucur (Stripe Rust), 6.5 oz/ac Prosario (Head Scab) were also applied.
- The Perkins County Rainfed trial was planted on September 17th into no-till fallow ground with 20 lb/ac of 11-52-0 applied as starter. 70 lb/ac of N was applied in the spring in the form of 32-0-0. Plots were harvested July 13th with a top yield of 91 bu/ac and an average yield of 76 bu/ac. Also 6.88 oz/a PowerFlex + 8 oz/a 2,4D. 4.0 oz Sieze (Stripe Rust), and Caramba (Head Scab) were applied.

West (Panhandle):

Five locations were planted in the West (Panhandle District). One irrigated trial was planted in Box Butte County. Rainfed trials were planted in Box Butte, Cheyenne, Deuel, and in Banner. All rainfed sites were left fallow the previous year with corn or wheat being the previous crop. Conventional tillage practices were used at all locations (Table B).

- The Box Butte County Irrigated trial was planted on September 25th. The previous crop was dry beans and a total of 90 lb/ac N, and 20 lb/ac S were applied. Plots were harvested August 1st with a top yield of 99 bu/ac and an average yield of 85 bu/ac. Headline was applied at flag leaf stage.
- The Cheyenne County Rainfed trial was planted on September 12th. Seed was sown into conventionally tilled soil following corn. Plots were harvested on July 13th with a top yield of 66 bu/ac and an average yield of 51 bu/ac. Reported application of Olympus Flex and Headline.
- The Deuel County Rainfed trial was planted on September 14th into conventionally tilled soil. A total of 60 lb/ac N, and 20 lb/ac P2O5 were applied. Plots were harvested on July 11th with a top yield of 63 bu/ac and average yield of 51 bu/ac. Application of Olympus Flex and Headline was reported.
- The Banner Rainfed trial was planted on September 15th. Seed was sown into conventionally tilled soil. A total of 10 lb/ac N and 20 lb/ac P2O5 fertilizer was applied. Plots were harvested on July 27th with a top yield of 63 bu/ac and an average yield of 49 bu/ac.
- The Box Butte County Rainfed trial was planted on September 9th. Plots were harvested on July 20th with a top yield of 69 bu/ac and an average yield of 54 bu/ac.

2016 WINTER WHEAT TRIAL LOCATIONS MAP



West

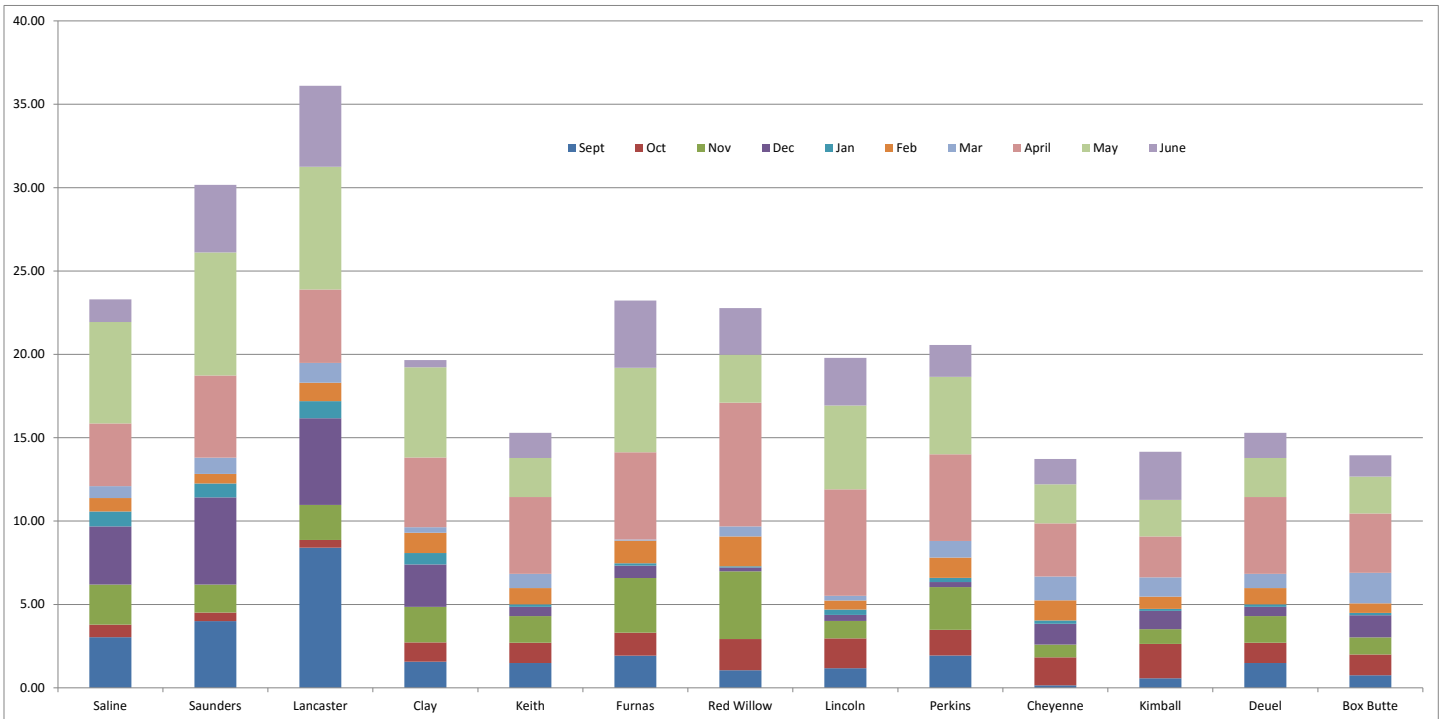
West Central

South Central

Southeast

● Conventional Rainfed Sites ● Conventional Irrigated Sites

2016 WINTER WHEAT TRIAL SITE PRECIPITATION



**TABLE A - LOCATION SUMMARY FOR NEBRASKA
WINTER WHEAT VARIETY TESTS - 2016**

| Location | Cooperator | Latitude | Longitude | Dates | | Location Mean Yield (bu/a) | |
|-------------------------|---|----------|------------|----------|--------------|----------------------------|----------|
| | | | | Plant | Harvest | Top Yield | Site Avg |
| Southeast | | | | | | | |
| Saline Rainfed | Steve Wiese; Wilber, NE | 40.43146 | -96.96040 | 10/23/15 | 6/30/16 | 79 | 67 |
| Saunders Rainfed | UNL ARDC; Ithaca, NE | 41.16057 | -96.40943 | 10/5/15 | 7/1/16 | 92 | 71 |
| Lancaster Rainfed | UNL Havelock Farm; Lincoln, NE | 40.85378 | -96.60873 | 10/5/15 | 7/5/16 | 78 | 60 |
| South Central | | | | | | | |
| Clay Rainfed | South Central Res & Ext Center; Harvard, NE | 40.57588 | -98.13299 | 9/18/15 | 7/13/16 | 68 | 44 |
| West Central | | | | | | | |
| Keith Rainfed | Darrell Zorn, Big Springs, NE | 41.20401 | -102.07555 | 9/21/15 | 7/8/16 | 73 | 60 |
| Furnas Rainfed | Rex McClain; Arapahoe, NE | 40.16091 | -99.79221 | 9/28/15 | 7/11/16 | 107 | 93 |
| Red Willow Rainfed | Cappel Farms; McCook, NE | 40.25036 | -100.63881 | 9/22/15 | LOST TO HAIL | | |
| Lincoln Rainfed | UNL WCREC; North Platte, NE | 41.05941 | -100.75162 | 9/28/15 | 7/7/16 | 96 | 82 |
| Perkins Rainfed | UNL Stumpf Wheat Center; Grant, NE | 40.84426 | -101.70522 | 9/17/15 | 7/13/16 | 91 | 76 |
| Panhandle (West) | | | | | | | |
| Cheyenne Rainfed | High Plains Ag Lab; Sidney, NE | 41.23275 | -103.01678 | 9/12/15 | 7/13/16 | 66 | 51 |
| Banner/Kimball Rainfed | Jeff Nelson, Bushnell, NE | 41.37757 | -103.98910 | 9/15/15 | 7/27/16 | 63 | 49 |
| Deuel Rainfed | Larry Flohr, Chappell, NE | 41.17101 | -102.24647 | 9/14/15 | 7/11/16 | 63 | 51 |
| Box Butte Rainfed | Cullan Farms; Hemingford, NE | 42.24838 | -103.01896 | 9/9/15 | 7/20/16 | 69 | 54 |
| Irrigated | | | | | | | |
| Box Butte Irrigated | Darby Jesperon; Hemingford, NE | 42.35052 | -103.07276 | 9/25/15 | 8/1/16 | 99 | 85 |
| Chase Irrigated | Tom Luhrs; Enders, NE | 40.49113 | -101.49618 | 10/8/15 | 7/12/16 | 105 | 81 |

TABLE B - SOIL TYPE, PREVIOUS CROP, FERTILIZERS AND HERBICIDES/ FUNGICIDES APPLIED TO NEBRASKA WINTER WHEAT VARIETY TESTS

| Location | Soil Type | Tillage System | Previous Crop(s) | Fertilizer | Herbicide/Fungicide |
|-------------------------|--------------------------------|----------------|------------------|---|--|
| Southeast | | | | | |
| Saline Rainfed | Crete and Muir silt loam | No-till | Soybean | 116 lb/ac urea & 100 lb/ac 11-52-0 at seeding, 50 lb/ac urea in March | 0.5 pt/ac 2,4-D, 4 oz/ac Folicur (Stripe Rust, Scab) |
| Saunders Rainfed | Tomek and Filbert silt loam | Disked | Oats | 80 lb/ac UAN | 0.4 oz/ac Finesse |
| Lancaster Rainfed | Butler silt loam | Disked | Oats | 125 lb/ac N | 0.4 oz Finesse, 32 oz Prowl H2O + 16 oz 2,4-D |
| South Central | | | | | |
| Clay Rainfed | Crete silt loam | Conventional | Fallow (Corn) | 100 lb/ac 11-52-0 | Verdict + Atrazine + Roundup PowerMax preplant, Warrant + Roundup PowerMax postplant |
| West Central | | | | | |
| Keith Rainfed | Keith and Kuma loam | No-till | Fallow (Corn) | 60 lb/ac 11-52-0 as starter, 50 lbs/ac N spring topdress | - |
| Furnas Rainfed | Holdrege silt loam | No-till | Fallow (Corn) | 40 lb/ac 11-52-0 as starter, 100 lbs/ac N spring topdress | 2,4-D + Affinity, Fungicide (Stripe Rust) |
| Lincoln Rainfed | Hall silt loam | No-till | Fallow (Corn) | 60 lbs/ac N as 32-0-0 pre-plant, 20 lb/ac 11-52-0 as starter. | 0.35 oz/a Amber, 4.0 oz/a Tebucur (Stripe Rust), 6.5 oz/a Prosario (Head Scab) |
| Perkins Rainfed | Alliance and Mace silt loam | No-till | Fallow (Corn) | 20 lb/ac 11-52-0 as starter, 70 lbs/ac N as 32-0-0. | 6.88 oz/a PowerFlex + 8 oz/a 2,4D. 4.0 oz Sieze (Stripe Rust), Caramba (Head Scab) |
| Panhandle (West) | | | | | |
| Cheyenne Rainfed | Rosebud and Keith loam | Conventional | Fallow (Corn) | - | Olympus Flex and Headline applied |
| Deuel Rainfed | Altvan-Eckley complex | Conventional | Fallow (Wheat) | 60 lb/ac N and 20 lb/ac P2O5 | Olympus Flex and Headline |
| Banner/Kimball Rainfed | Satanta-Johnstown-Altvan loams | Conventional | Fallow (Wheat) | 10 lb/ac N and 20 lb/ac P2O5 | - |
| Box Butte Rainfed | Rosebud loam | Conventional | Fallow (Wheat) | - | - |
| Irrigated | | | | | |
| Box Butte Irrigated | Alliance loam | No-till | Dry Beans (Corn) | 90 lbs/ac N and 20 lbs/ac S | Headline applied at flag stage |
| Chase Irrigated | Kuma silt loam | Conventional | - | 30 lb/ac 11-52-0 as starter | - |

TABLE C - ENTRIES AND CONTACT INFORMATION

The entrant should be contacted for information on seed availability, adaptation and agronomic characteristics.

| Brand | Contact Information | Varieties in Trials |
|-------------------------------|---|---|
| AAFC | | AC Emerson |
| AGSECO | P.O. Box 7 Girard, KS 66743 agseco.com | Tam 114 |
| Crop Rsch Foundation of WY | P.O. Box 1778 Laramie, WY 82073-1778 wyomingwheat.com | Cowboy |
| CROPLAN | winfield.com/farmer/croplan | CP EXP HRW 15-14 |
| Dyna-Gro | dynagroseed.com | HRX1652 |
| Husker Genetics | 1071 County Rd G Ithaca, NE 68033 huskergenetics.unl.edu | Alliance, Anton (W), Buckskin, Camelot, Goodstreak, Freeman, McGill, Overland, Panhandle, Pronghorn, Robidoux, Ruth (NE10589), Settler CL, Mattern, Wesley |
| Limagrain Cereal Seeds | 6414 N. Sheridan Wichita, KS 67204 limagraincerealseeds.com | LCS Chrome, LCS Compass, LCS Mint, LCS Wizard, T158, LCH13NEDH-14-69, LCH13NEDH-5-59, PSB13NEDH-14-71 |
| Montana Foundation Seed | Dept Plant Sci Montana St Univ. Bozeman, MT 59717-3150 plantsciences.montana.edu/FoundationSeed | Bearpaw, Judee, Warhorse |
| NuPride | | Infinity CL, Mace, Scout 66, Turkey |
| PlainsGold | Colorado State University Fort Collins, CO 80523 plainsgold.com | Antero, Avery, Brawl CL Plus, Byrd, Denali, Sunshine |
| South Dakota AES | South Dakota State University Brookings, SD 57007 | Ideal, Redfield |
| Syngenta - AgriPro | #29 Rolling Hills Road Kearney, NE 68845 agripro.com | SY Flint, SY Monument, SY Sunrise, SY Wolf |
| WestBred | 800 N. Lindbergh Ave. St. Louis, MO 63167 westbred.com | WB4303, WB4458, WB4721, WB-Cedar, WB-EXP16, WB-Grainfield, WB-Quake, Winterhawk |
| Wildcat Genetics | Kansas State University 2004 Throckmorton Plant Sci Center 1712 Claflin Rd. Manhattan, KS 66506-0110 785-532-6101 | "1863", KS11HW39-5-4 (Joe), KS12H56-6-4 (Tatanka), Oakley CL, Zenda |

WINTER WHEAT VARIETY CHARACTERISTICS 2016

| Variety | Origin | Family | Maturity | Winter Hardiness | Straw Stength | Plant Height | Coleoptile length | |
|----------------|--------------|-----------------------------|-----------------------|-------------------------|--------------------|-----------------------|-----------------------|--|
| 1863 | KSU | - | 3 | 4 | 2 | 7 | 5 | |
| AC Emerson | NK | NK | 2 | 4 | 5 | 6 | NK | |
| Alliance | NE | Chisholm | 3 | 2 | 5 | 6 | 2 | |
| Antelope (W) | ARS-NE | Arlin, Pronghorn | 4 | 4 | 4 | 4 | 5 | |
| Antero | PlainsGold | Trego, Betty, TAM 111 | 3 | 4 | 4 | 6 | 6 | |
| Anton (W) | ARS-NE | Platte | 4 | 3 | 6 | 3 | - | |
| Armour | B1551W/ | PL2181 | 1 | 4 | 5 | 2 | 5 | |
| Arrowsmith (W) | ARS-NE | Arapahoe | 4 | 4 | 6 | 7 | 7 | |
| Art | ASI | Jagger,TAM200, Archer | 2 | 4 | 4 | 2 | - | |
| Aspen | WB | Pioneer | 1 | 4 | 6 | 4 | 5 | |
| Avery | PlainsGold | Byrd, TAM 112 | 3 | 4 | 4 | 5 | 7 | |
| Bill Brown | CO | Yumar | 3 | 3 | 4 | 3 | 3 | |
| Bond CL | CO | Yumar | 2 | 3 | 4 | 5 | 6 | |
| Brawl CL Plus | CO | Above, Halt | 2 | 3 | 6 | 6 | 8 | |
| Buckskin | NE | Scout | 3 | 2 | 3 | 9 | 9 | |
| Byrd | CO | TAM 112, Ike, Halt | 3 | 4 | 4 | 5 | 7 | |
| Camelot | NE | - | 3 | 5 | 5 | 3 | 5 | |
| Cowboy | Crop Res Fnd | Hatcher sib, TAM 111 | 4 | 4 | 3 | 6 | 3 | |
| Denali | PlainsGold | Hatcher sib, TAM 111 | 4 | 4 | 4 | 7 | 7 | |
| Everest | KSU | Pioneer | 1 | 4 | 5 | 6 | 5 | |
| EXP HRW 15-14 | | | 2 | 4 | 5 | 4 | 3 | |
| Expedition | SD | Tomahawk/Bennett | 1 | 4 | 4 | 6 | 5 | |
| Freeman | NE | (ABI86*3414/JAG//K92)/AL- | 3 | 4 | 3 | 2 | 2 | |
| Goodstreak | NE | Colt | 3 | 3 | 4 | 8 | 8 | |
| Greer | AP | - | 3 | 3 | 5 | 2 | 5 | |
| Hallam | NE | Brule, Niobrara | 1 | 4 | 5 | 7 | 4 | |
| Hatcher | CO | Yumar, Vista, KS Exp | 3 | 3 | 3 | 2 | 4 | |
| Hitch | | Jagger | 4 | 4 | 6 | 3 | 5 | |
| Infinity CL | NE | Windstar, Above, Millennium | 4 | 4 | 5 | 7 | 4 | |
| KanMark | KSU | - | 3 | 4 | 5 | 3 | 5 | |
| Karl 92 | KSU | Karl Selection | 1 | 5 | 4 | 3 | 3 | |
| KS11HW39-5-4 | Kansas State | | 4 | 4 | 4 | 7 | n/a | |
| | | | 1 = Early 5 = Late | 1 = Tender 5 = Hardy | 1=Weak 6=Strong | 1 = Short 9 = Tall | 1 = Short 9 = Long | |

| | Hessian Fly | Leaf Rust | Stem Rust | Stripe Rust | Tan Spot | Soil Borne | Wheat Streak | Bushel Weight | Grain Protein | Target Environment |
|--|---|-----------|-----------|-------------|----------|------------|--------------|------------------|---------------|--------------------------------------|
| | 3 | 3 | 9 | 7 | 5 | 8 | 5 | 2 | 6 | SC and SE |
| | NK | 8 | 8 | NK | NK | 7 | 3 | 3 | 3 | Areas with high fusarium head blight |
| | 4 | 1 | 7 | 7 | 3 | 1 | 3 | 6 | 9 | - |
| | 1 | 7 | 9 | 9 | - | 1 | 1 | 5 | 4 | - |
| | 6 | 7 | 3 | 2 | 5 | 2 | 4 | 4 | 4 | West central, west, irr |
| | 1 | 7 | 7 | 4 | - | 9 | 1 | 4 | 2 | - |
| | 1 | 7 | 8 | 9 | 5 | 8 | 6 | 4 | 4 | All |
| | 1 | 7 | 7 | 9 | - | 1 | 1 | 5 | 1 | - |
| | 6 | 9 | 9 | 7 | 7 | 7 | - | 3 | 3 | - |
| | 1 | 6 | 8 | 9 | 5 | 8 | 6 | 4 | 4 | All |
| | 9 | 7 | 9 | 6 | 7 | 2 | 7+ | 5 | 5 | West central, west, irr |
| | ? | 8 | 2 | 5 | ? | ? | 4 | 2 | 6 | - |
| | ? | 3 | 2 | 8 | ? | ? | 6 | 7 | 7 | - |
| | 9 | 5 | 3 | 5 | 7 | 2 | 8 | 3 | 3 | West central, west, irr |
| | 4 | 1 | 1 | - | - | 7 | 3 | 4 | 3 | - |
| | 9 | 7 | 9 | 7 | 7 | 2 | 7+ | 5 | 5 | West central, west, irr |
| | 5 | 9 | 7 | 6 | 7 | 9 | 4 | 6 | 7 | - |
| | seg | 7 | 3 | 7 | 9 | 8 | 7 | 4 | 5 | West central, west, irr |
| | 3 | 7 | 3 | 7 | 8 | 8 | 6 | 2 | 5 | West central, west, irr |
| | 7 | 7 | 7 | 2 | 3 | 9 | 3 | 2 | 5 | South |
| | - | 7 | 5 | - | - | 6 | - | 2 | 5 | - |
| | 1 | - | 7 | - | 1 | 5 | - | - | - | - |
| | Seg | 6 | 2 | 4 | - | 8 | 9 | 6 | 5 | All NE |
| | 4 | 2 | 7 | - | - | 1 | 1 | 2 | 4 | - |
| | 1 | 6 | 9 | 7 | 5 | 9 | - | 6 | 5 | - |
| | 1 | 5 | 7 | - | - | 7 | 5 | 4 | 5 | - |
| | 7 | 5 | 7 | 5 | 5 | 7 | 8 | 4 | 6 | West central, west, irr |
| | 1 | 8 | 8 | 9 | 5 | 4 | 8 | 4 | 4 | All |
| | 1 | 7 | 7 | - | - | 7 | 7 | - | - | - |
| | 3 | 8 | 7 | 8 | 5 | 9 | 3 | 2 | 6 | SC,WC and W |
| | 1 | 1 | 3 | 5 | 7 | 9 | 1 | 3 | 3 | - |
| | 9 | 3 | n/a | n/a | 2 | 1 | n/a | 5 | n/a | WC |
| | 1 = Resistant 9 = Susceptible Seg = Segregating | | | | | | | 1 = High 9 = Low | | |

WINTER WHEAT VARIETY CHARACTERISTICS 2016 (CONTINUED)

| Variety | Origin | Family | Maturity | Winter Hardiness | Straw Strength | Plant Height | Coleoptile length |
|-----------------|--------------|---------------------------|-----------------------|-------------------------|--------------------|-----------------------|-----------------------|
| KS12H56-6-4 | Kansas State | | 3 | 4 | 3 | 5 | n/a |
| LCH13NEDH-14-69 | LIMA-UNL | NW03681/SD07W084 | 4 | 5 | 4 | 5 | 8 |
| LCH13NEDH-5-59 | LIMA-UNL | MCGILL/NE05496 | 5 | 5 | 5 | 6 | 8 |
| LCS Chrome | | | 3 | 4 | 5 | 5 | 6 |
| LCS Compass | | | 3 | 4 | 4 | 7 | 6 |
| LCS Wizard | | | 3 | 2 | 6 | 5 | 6 |
| LCS-Mint | CSU | Overley, Yumar, Exp | 3 | 3 | 4 | 5 | 6 |
| Lyman | SD | - | - | - | - | - | - |
| Mace | ARS-NE | Yuma, Arlin | 3 | 3 | 4 | 2 | - |
| Mattern | USDA | Jagger/Niobrara | 3 | 5 | 4 | 5 | 4 |
| MCGill | NE | Ike | 2 | 4 | 3 | 4 | 5 |
| Millennium | NE | Abilene, Arapahoe | 4 | 3 | 5 | 7 | 3 |
| N11MD2166W | USDA | Mace/SD98W175-1 | 4 | 5 | 3 | 5 | - |
| N11MD2172 | USDA | KS03HW155-2/ | 3 | - | 4 | 4 | - |
| NE06430 | NE | Wesley, Tam107 | 2 | 7 | 2 | 6 | 5 |
| NE07531 | NE | Halam | 3 | 4 | 5 | 5 | 4 |
| NE09517 | NE | Jagger/Thunderbolt//Jag- | 3 | 4 | - | 4 | 5 |
| NE09521 | NE | Redland | 3 | 4 | - | 5 | 2 |
| NE10589 (Ruth) | NE | OK98697/Jagalene//Camelot | 4 | 4 | 5 | 5 | - |
| NE12561 | NE | NI04420/NE00403 | 2 | 4 | 5 | 4 | - |
| NE12589 | NE | CO97547-7/OVERLAND// | 2 | 3 | 4 | 5 | - |
| NI06736 | NE | Arlin | 2 | 4 | - | 3 | 3 |
| NI10718W | NE White | Abilene/Karl//Anton | 4 | 4 | 4 | 5 | - |
| NI12702W | NE White | N03Y2014/NW03681// | 4 | 4 | 5 | 4 | - |
| NI13706 | NE | NI02425/HV9W99-558//Ro- | 2 | 4 | 5 | 3 | - |
| NIO6736 | NE | Arlin | 2 | 4 | - | 3 | 3 |
| NIO7703 | NE | Karl | 2 | 4 | - | 5 | 5 |
| NW03666 (W) | NE | Semidwarf | 2 | 4 | - | 4 | - |
| NW03681 (W) | NE | Wesley | 4 | 4 | - | 5 | 4 |
| NW07505 (W) | NE | Trego | 2 | 4 | - | 6 | 4 |
| NW09627 | NE | RioBlanco, Halt | 5 | 4 | - | 2 | 5 |
| NX04Y2107W | USDA Waxy | Jagger,Niobrara | 3 | 5 | 4 | 5 | - |
| Oakley CL | KSU | - | 4 | 4 | 3 | 7 | 7 |
| | | | 1 = Early 5 = Late | 1 = Tender 5 = Hardy | 1=Weak 6=Strong | 1 = Short 9 = Tall | 1 = Short 9 = Long |

| | Hessian Fly | Leaf Rust | Stem Rust | Stripe Rust | Tan Spot | Soil Borne | Wheat Streak | Bushel Weight | Grain Protein | Target Environment |
|--|---|-----------|-----------|-------------|----------|------------|--------------|------------------|---------------|---|
| | 9 | 9 | n/a | 2 | 5 | 2 | n/a | n/a | n/a | WC and W |
| | - | 9 | 9 | 9 | - | 9 | - | 2 | 3 | all |
| | - | 6 | 9 | 9 | - | 2 | - | 4 | 2 | western |
| | 9 | 9 | 6 | 9 | - | 9 | - | 3 | 2 | all |
| | - | 5 | 9 | 9 | - | 2 | - | 3 | 2 | western dry |
| | 9 | 4 | 7 | 9 | - | 2 | - | 3 | 2 | central |
| | - | 3 | 6 | 9 | - | 4 | - | 3 | 3 | all |
| | - | - | - | - | - | - | - | - | - | - |
| | 1 | 3 | 9 | 6 | - | 1 | 9 | 7 | 3 | - |
| | 1 | 4 | 9 | 9 | - | 7 | 2 | 3 | 2 | SE/SC |
| | 1 | 3 | 7 | 1 | - | 7 | 1 | 7 | - | - |
| | 5 | 3 | 7 | 7 | 3 | 1 | 1 | 3 | 5 | - |
| | 1 | 4 | 9 | 8 | - | 3 | 1 | 4 | 3 | Good dryland yield potential; Resistant |
| | 1 | 4 | 8 | 8 | - | 1 | 3 | 4 | 3 | |
| | 4 | 3 | 7 | 9 | - | 3 | - | 4 | 7 | Eastern NE |
| | 7 | 1 | 7 | 5 | - | 1 | 1 | 4 | 6 | |
| | 1 | 3 | 7 | 8 | - | 8 | 1 | 2 | 5 | Broadly adapted |
| | 1 | 3 | 7 | 3 | - | 8 | 1 | 6 | 4 | Broadly adapted |
| | 7 | 2 | 8 | 5 | - | 9 | 1 | 2 | 5 | Very broadly adapted |
| | 6 | 7 | 7 | 7 | - | 9 | 1 | 3 | 4 | Eastern and Central NE |
| | 5 | 5 | 7 | 3 | - | 9 | 1 | 3 | 2 | Broadly Adapated |
| | 7 | 2 | 7 | 7 | - | 5 | 1 | 7 | - | |
| | 1 | 1 | 7 | 7 | - | 8 | 1 | 2 | 3 | Broadly adapted |
| | 1 | 6 | 6 | 7 | - | 9 | 1 | 2 | 4 | Eastern and Central NE, Good acid |
| | 1 | 5 | 6 | 8 | - | 8 | 1 | 2 | 5 | Eatern and Central NE |
| | 7 | 2 | 7 | 7 | - | 5 | - | 7 | - | |
| | 3 | 2 | 4 | 2 | - | 5 | - | 7 | 5 | |
| | 1 | 4 | 6 | - | - | 7 | 1 | 9 | - | West NE |
| | 1 | 4 | 4 | 7 | - | 4 | 1 | 1 | - | - |
| | 2 | 5 | 6 | 4 | - | 8 | - | 8 | 3 | |
| | 1 | 2 | 7 | 8 | - | 4 | 1 | 3 | 5 | NW Nebraska |
| | 1 | 4 | 9 | 9 | - | 7 | 2 | 3 | 2 | |
| | 9 | 4 | 2 | 8 | 2 | 2 | 7 | 4 | 5 | WC and W, one gene clearfield |
| | 1 = Resistant 9 = Susceptible Seg = Segregating | | | | | | | 1 = High 9 = Low | | |

WINTER WHEAT VARIETY CHARACTERISTICS 2016 (CONTINUED)

| Variety | Origin | Family | Maturity | Winter Hardness | Straw Strength | Plant Height | Coleoptile length | |
|-----------------|--------------|------------------------------|-----------------------|-------------------------|--------------------|-----------------------|-----------------------|--|
| Overland | NE | Millennium, Wahoo | 4 | 5 | 5 | 5 | - | |
| Panhandle | NE | NE97426 /NE98574 | 4 | 4 | 4 | 7 | 7 | |
| PostRock | ASI | Jagger, Ogallala | 2 | 4 | 5 | 2 | 3 | |
| Pronghorn | NE | Colt | 3 | 4 | 3 | 8 | 8 | |
| PSB13NEDH-14-71 | LIMA-UNL | NW03681/SD07W084 | 4 | 5 | 5 | 5 | 8 | |
| Robidoux | NE | Wahoo, Millennium | 3 | 4 | - | 5 | 6 | |
| Santa Fe | WB | Jagger | 1 | 4 | 4 | 3 | 5 | |
| Scout 66 | NE | Ponca | 3 | 2 | 1 | 9 | 8 | |
| Settler CL | NE | Infinity, Millennium, Wesley | 3 | 4 | - | 1 | - | |
| Snowmass | CO | KS96HW94//Trego/CO960293 | 5 | - | 2 | 6 | 5 | |
| Sunshine | PlainsGold | Trego, Betty, Westbred exp | 3 | 4 | 5 | 5 | 8 | |
| SY Flint | AgriPro | | 2 | 3 | 5 | 2 | 5 | |
| SY Gold | - | Jagger | 3 | 2 | 5 | 4 | 5 | |
| SY Monument | SY | - | 4 | 4 | 3 | 5 | 5 | |
| SY Sunrise | AgriPro | | 3 | 4 | 4 | 1 | 5 | |
| SY Wolf | AP | - | 3 | 4 | 4 | 3 | 5 | |
| T158 | LIMA | TAM 107 | 2 | 5 | 3 | 3 | 6 | |
| T163 | LIMA | TAM 107 | 2 | - | 4 | 4 | - | |
| Thunder CL | CO | KS01-5539/CO99W165 | 2 | - | 5 | 2 | 5 | |
| Turkey | Ukraine | - | 5 | 4 | 2 | 1 | 1 | |
| Wahoo | NE | Arapahoe | 4 | 4 | 5 | 6 | 4 | |
| WB4303 | | | 2 | 3 | 1 | 5 | | |
| WB4458 | WB | Overley, Goertzen | 3 | 5 | 6 | 5 | 5 | |
| WB4721 | | | 4 | 2 | 2 | 5 | - | |
| WB-Cedar | WB | Pioneer | 1 | 4 | 5 | 3 | 5 | |
| WB-Grainfield | WB | KSU | 4 | 4 | 4 | 5 | 5 | |
| Wb-Quake | MT | | 4 | 5 | 4 | 7 | - | |
| WB-Redhawk | WB | KSU | 3 | 4 | 4 | 5 | 5 | |
| WB-Stout | WB | Jagger | 2 | 4 | 3 | 5 | 5 | |
| Wesley | ARS-NE | Sumner | 3 | 4 | 5 | 2 | 1 | |
| Winterhawk | WB | Pioneer | 3 | 4 | 4 | 6 | 5 | |
| Zenda | Kansas State | | 2 | n/a | n/a | n/a | n/a | |
| | | | 1 = Early 5 = Late | 1 = Tender 5 = Hardy | 1=Weak 6=Strong | 1 = Short 9 = Tall | 1 = Short 9 = Long | |

| | Hessian Fly | Leaf Rust | Stem Rust | Stripe Rust | Tan Spot | Soil Borne | Wheat Streak | Bushel Weight | Grain Protein | Target Environment |
|---|-------------|-----------|-----------|-------------|----------|------------|--------------|------------------|---------------|-----------------------------|
| | 1 | 7 | 5 | 3 | 4 | 1 | 5 | 2 | - | - |
| | 1 | 4 | 6 | 5 | - | 6 | 1 | 6 | 8 | Western NE |
| | 1 | 7 | 7 | 7 | 7 | 8 | 4 | 2 | 3 | - |
| | 1 | 3 | 7 | - | - | 1 | 1 | 5 | 5 | - |
| | - | 8 | 9 | 9 | - | 4 | - | 3 | 2 | all |
| | 1 | 3 | - | 6 | - | 7 | 1 | 5 | - | - |
| | 1 | 8 | 8 | 9 | 5 | 4 | 6 | 4 | 4 | All |
| | 1 | 3 | 5 | 9 | 1 | 1 | 3 | 4 | 5 | - |
| | 1 | 5 | 6 | - | - | 9 | 5 | - | - | - |
| | - | 5 | - | 4 | - | - | 8 | 4 | - | West NE |
| | 1 | 8 | 9 | 9 | 4 | 3 | - | 6 | 3 | West central, west, irr |
| | 9 | 4 | 9 | 8 | | 9 | 6 | 2 | 3 | |
| | 1 | 9 | 9 | 1 | 5 | 9 | n/a | 2 | 3 | |
| | 1 | 8 | 9 | 9 | - | 7 | 5 | 3 | 3 | All |
| | 9 | 2 | 1 | 7 | - | 1 | 6 | 1 | 4 | |
| | 1 | 8 | 9 | 6 | 8 | 9 | - | 3 | 4 | - |
| | - | 4 | 6 | 9 | - | 8 | - | 2 | 3 | Western |
| | 1 | 4 | - | 9 | 9 | - | - | 3 | - | - |
| | - | 5 | - | 7 | - | - | 7 | 4 | - | West NE |
| | 1 | 3 | 3 | - | - | 1 | 5 | 3 | 1 | - |
| | 4 | 3 | 7 | - | - | 1 | 1 | 6 | 5 | - |
| | - | 5 | 5 | 5 | 5 | 5 | 5 | 5 | - | Irrigated & Eastern Dryland |
| | 1 | 5 | 6 | 9 | 3 | 5 | 5 | 3 | 3 | All |
| | - | 2 | 2 | 5 | 2 | 2 | 2 | 2 | - | Broad Adaptability |
| | 1 | 6 | 8 | 9 | 5 | 8 | 5 | 4 | 4 | All |
| | 1 | 9 | 9 | 1 | 6 | 9 | 4 | 3 | 5 | Central and west |
| | - | 5 | - | - | 3 | 7 | - | 5 | - | Panhandle |
| | 1 | 9 | 9 | 1 | - | 9 | 4 | 3 | 5 | East and SC |
| | 1 | 9 | 8 | 9 | 5 | 3 | 5 | 6 | 2 | All |
| | 1 | 2 | 9 | 9 | 5 | 9 | 1 | 7 | 4 | - |
| | 1 | 1 | 1 | 9 | 5 | 8 | 4 | 2 | 4 | All |
| | n/a | 8 | n/a | 1 | n/a | 1 | n/a | n/a | n/a | SC and SE |
| 1 = Resistant 9 = Susceptible Seg = Segregating | | | | | | | | 1 = High 9 = Low | | |

SOUTHEAST DRYLAND WHEAT VARIETY TESTS - 2016

SALINE, SAUNDERS, AND LANCASTER COUNTIES

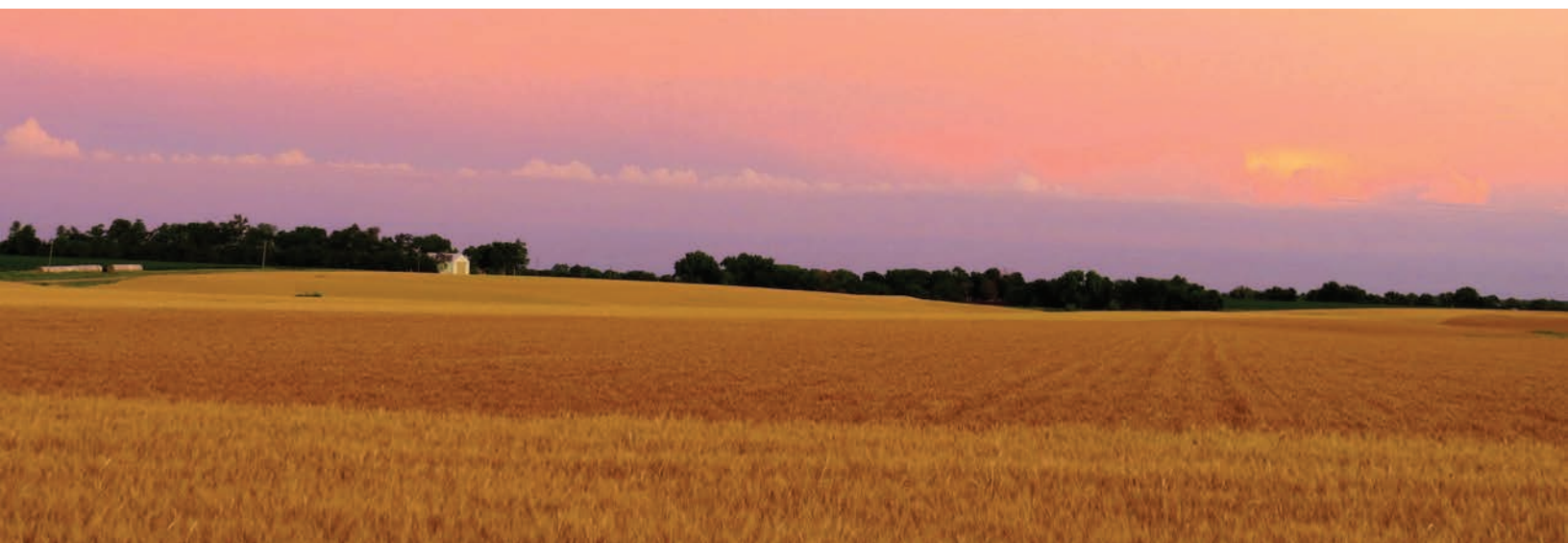
| Brand | Variety | Avg. Yield (bu/a) | Saline Yield (bu/a) | Saunders Yield (bu/a) | Lancaster Yield (bu/a) | Bushel Weight (lb/bu) | Plant height (in) | Kernel Weight (000/lb) | Grain Protein (%) | Lodging (%) |
|---|-----------------|-------------------|---------------------|-----------------------|------------------------|-----------------------|-------------------|------------------------|-------------------|-------------|
| Husker Genetics | Freeman | 78 | 78 | 77 | 78 | 57 | 39 | 14.8 | 12.9 | 8 |
| Syngenta AgriPro | SY Wolf | 78 | 71 | 87 | 76 | 58 | 37 | 14.2 | 14.0 | 0 |
| WESTBRED | WB-Grainfield | 77 | 79 | 82 | 69 | 59 | 38 | 13.6 | 12.6 | 0 |
| Limagrain Cereal | LCH13NEDH-14-69 | 75 | 71 | 80 | 74 | 59 | 38 | 12.5 | 13.3 | 2 |
| Wildcat Genetics | Zenda | 74 | 62 | 92 | 68 | 60 | 37 | 14.0 | 13.4 | 0 |
| WESTBRED | WB4721 | 74 | 65 | 87 | 71 | 60 | 37 | 14.6 | 13.6 | 0 |
| Limagrain Cereal | PSB13NEDH-14-71 | 73 | 67 | 76 | 76 | 59 | 37 | 13.6 | 12.9 | 0 |
| WESTBRED | WB4303 | 73 | 63 | 90 | 67 | 56 | 35 | 14.7 | 13.2 | 0 |
| --- | NX04Y2107W | 72 | 64 | 81 | 72 | 56 | 39 | 14.1 | 13.7 | 5 |
| Husker Genetics | NE10589 (Ruth) | 72 | 74 | 71 | 72 | 58 | 41 | 15.3 | 13.0 | 0 |
| --- | Mattern | 71 | 67 | 78 | 67 | 57 | 40 | 13.5 | 13.7 | 5 |
| --- | N11MD2172 | 71 | 71 | 78 | 64 | 58 | 39 | 14.1 | 13.1 | 7 |
| --- | NE12561 | 71 | 65 | 78 | 71 | 60 | 38 | 13.7 | 13.9 | 1 |
| WESTBRED | WB-Cedar | 70 | 65 | 82 | 63 | 58 | 34 | 12.3 | 14.4 | 1 |
| --- | NI13706 | 69 | 67 | 74 | 67 | 59 | 37 | 14.3 | 13.7 | 1 |
| --- | NE09517 | 68 | 67 | 86 | 52 | 60 | 40 | 12.9 | 13.7 | 5 |
| --- | NI10718W | 68 | 74 | 74 | 55 | 58 | 38 | 14.2 | 13.2 | 12 |
| --- | NI12702W | 68 | 55 | 81 | 69 | 61 | 40 | 14.1 | 14.1 | 0 |
| Syngenta AgriPro | SY Flint | 65 | 64 | 71 | 59 | 59 | 36 | 14.0 | 13.5 | 8 |
| Wildcat Genetics | "1863" | 63 | 65 | 59 | 64 | 59 | 39 | 14.5 | 12.9 | 19 |
| -- | Wesley | 62 | 69 | 64 | 54 | 56 | 37 | 15.9 | 13.8 | 0 |
| Dyna-Gro | HRX1652 | 62 | 73 | 46 | 66 | 57 | 39 | 15.0 | 13.4 | 29 |
| Husker Genetics | Overland | 59 | 65 | 55 | 57 | 57 | 41 | 16.3 | 13.0 | 1 |
| NuPride | Camelot | 57 | 69 | 53 | 49 | 56 | 41 | 14.2 | 13.5 | 20 |
| Husker Genetics | McGill | 54 | 66 | 54 | 43 | 54 | 41 | 16.4 | 13.3 | 20 |
| Meridian Seeds | AC Emerson | 44 | 56 | 46 | 31 | 56 | 40 | 20.4 | 14.2 | 0 |
| -- | Scout 66 | 38 | 59 | 41 | 15 | 51 | 44 | 13.2 | 14.7 | 30 |
| -- | Turkey | 35 | 59 | 32 | 15 | 48 | 45 | 15.3 | 15.0 | 17 |
| Average all entries | | 66 | 67 | 71 | 60 | 57 | 39 | 14.5 | 13.6 | 7 |
| Diff required for significance at 5% | | 16 | 11 | 10 | 7 | 6 | 2 | 2.0 | 0.8 | 26 |

SOUTHEAST DRYLAND WHEAT VARIETY TESTS 2012- 2016

| Brand | Variety | Grain Yield (bu/a) | Bushel Weight (lb/bu) | Kernel Weight (000/lb) | Grain Protein (%) | Plant Height (inches) |
|---|----------------|--------------------|-----------------------|------------------------|-------------------|-----------------------|
| Two year averages | | | | | | |
| Syngenta AgriPro | SY Wolf | 65 | 56 | 15.0 | 14.7 | 37 |
| Husker Genetics | Freeman | 59 | 53 | 16.5 | 13.5 | 39 |
| WESTBRED | WB-Cedar | 56 | 54 | 14.0 | 14.9 | 33 |
| Husker Genetics | NE10589 (Ruth) | 54 | 54 | 17.5 | 13.2 | 40 |
| Wildcat Genetics | "1863" | 54 | 56 | 16.1 | 12.9 | 38 |
| --- | NI10718W | 51 | 54 | 15.9 | 13.7 | 37 |
| --- | NX04Y2107W | 51 | 50 | 16.6 | 14.2 | 40 |
| --- | Mattern | 50 | 51 | 16.2 | 14.1 | 40 |
| Husker Genetics | Overland | 48 | 55 | 17.5 | 13.5 | 41 |
| --- | NE09517 | 47 | 51 | 15.5 | 14.4 | 40 |
| -- | Wesley | 45 | 51 | 16.9 | 14.4 | 36 |
| NuPride | Camelot | 42 | 50 | 16.0 | 13.8 | 40 |
| Husker Genetics | McGill | 39 | 48 | 19.7 | 13.6 | 40 |
| -- | Scout 66 | 33 | 48 | 14.3 | 15.1 | 46 |
| -- | Turkey | 30 | 46 | 16.4 | 15.3 | 45 |
| Average of all entries | | 48 | 52 | 16.3 | 14.1 | 39 |
| Difference required for significance at 5% | | 15 | 5 | 2.0 | 0.5 | 3 |
| Three year averages | | | | | | |
| Syngenta AgriPro | SY Wolf | 68 | 57 | 14.3 | 14.6 | 33 |
| Husker Genetics | Freeman | 63 | 55 | 15.7 | 13.8 | 35 |
| Husker Genetics | NE10589 (Ruth) | 62 | 56 | 16.3 | 13.6 | 37 |
| WESTBRED | WB-Cedar | 60 | 55 | 13.4 | 14.9 | 30 |
| --- | NX04Y2107W | 57 | 52 | 15.1 | 14.5 | 37 |
| Husker Genetics | Overland | 56 | 56 | 16.0 | 13.7 | 37 |
| --- | Mattern | 54 | 53 | 15.2 | 14.4 | 38 |
| --- | NE09517 | 54 | 54 | 14.4 | 14.4 | 37 |
| -- | Wesley | 52 | 53 | 15.3 | 14.4 | 33 |
| NuPride | Camelot | 52 | 53 | 14.9 | 14.0 | 38 |
| Husker Genetics | McGill | 49 | 51 | 17.6 | 13.7 | 37 |
| -- | Scout 66 | 44 | 52 | 13.6 | 15.0 | 44 |
| -- | Turkey | 42 | 50 | 15.4 | 15.3 | 43 |
| Average of all entries | | 55 | 54 | 15.2 | 14.3 | 37 |
| Difference required for significance at 5% | | 12 | NS | 2.0 | 0.5 | 2 |

SOUTHEAST DRYLAND WHEAT VARIETY TESTS (continued)

| Brand | Variety | Grain Yield (bu/a) | Bushel Weight (lb/bu) | Kernel Weight (000/lb) | Grain Protein (%) | Plant Height (inches) |
|---|----------|--------------------------|-----------------------------|------------------------------|-------------------------|-----------------------------|
| Four year averages | | | | | | |
| Syngenta AgriPro | SY Wolf | 70 | 58 | 14.7 | 14.4 | 33 |
| Husker Genetics | Freeman | 67 | 55 | 15.5 | 13.8 | 35 |
| WESTBRED | WB-Cedar | 66 | 57 | 13.3 | 14.7 | 30 |
| Husker Genetics | Overland | 61 | 57 | 15.9 | 13.7 | 37 |
| --- | NE09517 | 60 | 56 | 14.3 | 14.1 | 37 |
| --- | Mattern | 59 | 54 | 15.4 | 14.5 | 38 |
| -- | Wesley | 58 | 54 | 15.1 | 14.2 | 33 |
| NuPride | Camelot | 58 | 55 | 14.5 | 14.0 | 38 |
| Husker Genetics | McGill | 57 | 53 | 17.1 | 13.7 | 37 |
| -- | Scout 66 | 47 | 54 | 13.6 | 14.8 | 44 |
| -- | Turkey | 46 | 52 | 15.4 | 15.3 | 43 |
| Average of all entries | | 59 | 55 | 15.0 | 14.3 | 37 |
| Difference required for significance at 5% | | 10 | 4 | 1.0 | 0.5 | 2 |
| Five year averages | | | | | | |
| Husker Genetics | Freeman | 68 | 55 | 15.7 | 13.7 | 36 |
| Husker Genetics | Overland | 62 | 57 | 15.9 | 13.6 | 37 |
| --- | Mattern | 61 | 55 | 15.1 | 14.3 | 38 |
| Husker Genetics | McGill | 58 | 54 | 17.1 | 13.6 | 38 |
| NuPride | Camelot | 58 | 55 | 14.6 | 13.9 | 38 |
| -- | Wesley | 58 | 55 | 15.1 | 14.1 | 34 |
| -- | Scout 66 | 46 | 55 | 13.9 | 14.5 | 44 |
| -- | Turkey | 44 | 53 | 15.7 | 15.0 | 43 |
| Average of all entries | | 57 | 55 | 15.4 | 14.1 | 38 |
| Difference required for significance at 5% | | 9 | 3 | 1.0 | 0.5 | 2 |



SOUTH CENTRAL DRYLAND WHEAT VARIETY TEST - 2016

CLAY COUNTY

| Brand | Variety | Avg Yield (bu/a) | Kernel Weight (000/lb) | Grain Protein (%) |
|---|-----------------|------------------------|------------------------------|-------------------------|
| Wildcat Genetics | Zenda | 68 | 17.8 | 14.7 |
| --- | NE12561 | 60 | 17.3 | 15.4 |
| WESTBRED | WB-Grainfield | 59 | 20.1 | 14.1 |
| WESTBRED | WB4303 | 56 | 21.5 | 14.9 |
| WESTBRED | WB4721 | 56 | 19.5 | 15.6 |
| Limagrain Cereal Seeds | LCH13NEDH-14-69 | 55 | 16.7 | 14.7 |
| Syngenta AgriPro | SY Flint | 54 | 19.2 | 15.1 |
| --- | NI13706 | 54 | 19.7 | 15.5 |
| Husker Genetics | NE10589 (Ruth) | 52 | 18.9 | 14.5 |
| --- | NI12702W | 52 | 18.5 | 16.1 |
| Husker Genetics | Freeman | 51 | 20.9 | 14.7 |
| --- | NE09517 | 51 | 17.2 | 15.2 |
| Syngenta AgriPro | Monument | 51 | 18.4 | 15.0 |
| Limagrain Cereal Seeds | PSB13NEDH-14-71 | 51 | 19.4 | 14.6 |
| Wildcat Genetics | "1863" | 49 | 20.1 | 14.3 |
| Syngenta AgriPro | SY Wolf | 47 | 18.3 | 15.4 |
| Limagrain Cereal Seeds | LCS Chrome | 47 | 20.5 | 16.0 |
| --- | Mattern | 43 | 19.2 | 15.0 |
| Limagrain Cereal Seeds | LCS Mint | 41 | 18.1 | 14.2 |
| WESTBRED | WB-Cedar | 40 | 14.0 | 16.3 |
| Dyna-Gro | HRX1652 | 40 | 18.5 | 15.0 |
| --- | NX04Y2107W | 39 | 20.3 | 15.5 |
| --- | N11MD2172 | 37 | 20.7 | 16.7 |
| -- | Wesley | 36 | 23.3 | 15.6 |
| Husker Genetics | Overland | 35 | 22.1 | 14.5 |
| --- | NI10718W | 33 | 19.5 | 15.5 |
| --- | NE07531 | 25 | 25.6 | 14.9 |
| Meridian Seeds | AC Emerson | 15 | 28.4 | 15.7 |
| -- | Scout 66 | 14 | 20.5 | 16.7 |
| -- | Turkey | 13 | 21.7 | 17.1 |
| Average of all entries | | 44 | 19.9 | 15.3 |
| Difference required for significance at 5% | | 10 | 0.5 | 2.7 |

SOUTH CENTRAL DRYLAND WHEAT VARIETY TESTS 2012- 2016

| Brand | Variety | Grain Yield (bu/a) | Bushel Weight (lb/bu) | Kernel Weight (000/lb) | Grain Protein (%) | Plant Height (inches) |
|---|----------------|--------------------------|-----------------------------|------------------------------|-------------------------|-----------------------------|
| Two year averages | | | | | | |
| WESTBRED | WB-Grainfield | 50 | | 14.1 | 20.1 | 42 |
| Husker Genetics | NE10589 (Ruth) | 44 | | 14.5 | 18.9 | 43 |
| Wildcat Genetics | "1863" | 43 | | 14.3 | 20.1 | 43 |
| --- | NE09517 | 42 | | 15.2 | 17.2 | 42 |
| --- | Mattern | 38 | | 15.0 | 19.2 | 40 |
| Husker Genetics | Freeman | 38 | | 14.7 | 20.9 | 41 |
| WESTBRED | WB-Cedar | 36 | | 16.3 | 14.0 | 40 |
| --- | NX04Y2107W | 36 | | 15.5 | 20.3 | 41 |
| Husker Genetics | Overland | 35 | | 14.5 | 22.1 | 43 |
| --- | NI10718W | 29 | | 15.5 | 19.5 | 41 |
| -- | Wesley | 29 | | 15.6 | 23.3 | 42 |
| Limagrain Cereal Seeds | LCS Mint | 28 | | 14.2 | 18.1 | 42 |
| -- | Scout 66 | 18 | | 16.7 | 20.5 | 43 |
| --- | NE07531 | 18 | | 14.9 | 25.6 | 41 |
| -- | Turkey | 15 | | 17.1 | 21.7 | 41 |
| Average of all entries | | 33 | | 15.2 | 20.1 | 42 |
| Difference required for significance at 5% | | 13 | | NS | NS | NS |
| Three year averages | | | | | | |
| Husker Genetics | NE10589 (Ruth) | 52 | 56 | 14.3 | 16.6 | 38 |
| --- | NE09517 | 47 | 58 | 15.0 | 15.2 | 38 |
| Husker Genetics | Overland | 44 | 57 | 14.7 | 18.1 | 39 |
| --- | Mattern | 44 | 53 | 15.6 | 17.3 | 38 |
| Husker Genetics | Freeman | 44 | 55 | 14.7 | 17.8 | 37 |
| --- | NX04Y2107W | 42 | 55 | 15.6 | 16.6 | 37 |
| WESTBRED | WB-Cedar | 41 | 56 | 15.8 | 12.9 | 34 |
| -- | Wesley | 37 | 55 | 15.5 | 18.7 | 37 |
| Limagrain Cereal Seeds | LCS Mint | 36 | 57 | 14.3 | 16.0 | 38 |
| --- | NE07531 | 30 | 56 | 14.9 | 20.4 | 37 |
| -- | Scout 66 | 24 | 58 | 16.3 | 16.9 | 42 |
| -- | Turkey | 24 | 55 | 16.8 | 17.9 | 42 |
| Average of all entries | | 39 | 56 | 15.3 | 17.0 | 38 |
| Difference required for significance at 5% | | 10 | NS | 3.0 | 0.8 | NS |

SOUTH CENTRAL DRYLAND WHEAT VARIETY TESTS (continued)

| Four year averages | | | | | | |
|---|----------|-----------|-----------|-------------|-------------|-----------|
| --- | NE09517 | 58 | 60 | 14.5 | 15.3 | 39 |
| Husker Genetics | Overland | 56 | 59 | 14.5 | 17.1 | 39 |
| Husker Genetics | Freeman | 55 | 57 | 14.3 | 16.9 | 37 |
| --- | Mattern | 54 | 55 | 15.3 | 17.2 | 39 |
| WESTBRED | WB-Cedar | 52 | 59 | 15.3 | 12.7 | 33 |
| -- | Wesley | 50 | 58 | 15.0 | 17.1 | 36 |
| Limagrain Cereal Seeds | LCS Mint | 50 | 59 | 14.1 | 15.8 | 38 |
| --- | NE07531 | 47 | 59 | 14.6 | 18.1 | 38 |
| -- | Scout 66 | 37 | 59 | 15.7 | 16.1 | 41 |
| -- | Turkey | 35 | 58 | 16.1 | 17.6 | 42 |
| Average of all entries | | 49 | 58 | 14.9 | 16.4 | 38 |
| Difference required for significance at 5% | | 10 | 1 | 3.0 | 0.6 | 3 |
| Five year averages | | | | | | |
| Husker Genetics | Overland | 57 | 59 | 14.1 | 17.0 | 39 |
| --- | Mattern | 56 | 56 | 14.6 | 16.8 | 38 |
| Husker Genetics | Freeman | 56 | 57 | 14.0 | 17.0 | 37 |
| WESTBRED | WB-Cedar | 54 | 58 | 15.2 | 12.9 | 33 |
| --- | NE07531 | 50 | 60 | 14.4 | 17.4 | 37 |
| -- | Wesley | 50 | 58 | 14.8 | 16.8 | 36 |
| -- | Scout 66 | 36 | 59 | 15.3 | 15.9 | 41 |
| -- | Turkey | 33 | 59 | 15.5 | 17.7 | 40 |
| Average of all entries | | 49 | 58 | 14.7 | 16.4 | 38 |
| Difference required for significance at 5% | | 9 | 1 | 2.0 | 2.0 | 3 |



WEST CENTRAL DRYLAND WHEAT VARIETY TESTS - 2016

KEITH, FURNAS, LINCOLN, AND PERKINS COUNTIES

| Brand | Variety | Avg Yield (bu/a) | Keith Yield (bu/a) | Furnas Yield (bu/a) | Lincoln Yield (bu/a) | Perkins Yield (bu/a) | Bushel Weight (lb/bu) | Plant Height (in) | Kernel Weight (000/lb) | Grain Protein (%) | Lodging (%) |
|------------------|-----------------|------------------|--------------------|---------------------|----------------------|----------------------|-----------------------|-------------------|------------------------|-------------------|-------------|
| PlainsGold | Antero | 90 | 70 | 106 | 96 | 88 | 56 | 38 | 12.7 | 9.0 | 11.9 |
| Husker Genetics | Freeman | 89 | 66 | 107 | 95 | 87 | 56 | 36 | 13.2 | 8.0 | 12.7 |
| Wildcat Genetics | KS11HW39-5-4 | 89 | 73 | 101 | 96 | 85 | 58 | 38 | 13.7 | 8.0 | 12.3 |
| WESTBRED | WB-Grainfield | 87 | 68 | 102 | 96 | 82 | 58 | 37 | 12.5 | 6.0 | 12.1 |
| Husker Genetics | Robidoux | 86 | 64 | 101 | 87 | 91 | 58 | 37 | 13.4 | 7.0 | 12.9 |
| Syngenta AgriPro | Monument | 85 | 70 | 102 | 85 | 81 | 56 | 36 | 13.8 | 5.0 | 12.2 |
| Wildcat Genetics | KS12H56-6-4 | 85 | 62 | 101 | 93 | 84 | 57 | 37 | 13.9 | 14.0 | 11.6 |
| WESTBRED | Winterhawk | 84 | 64 | 100 | 86 | 86 | 58 | 37 | 13.3 | 5.0 | 12.1 |
| PlainsGold | Byrd | 83 | 65 | 102 | 83 | 83 | 57 | 36 | 14.0 | 9.0 | 12.2 |
| Wildcat Genetics | Oakley CL | 83 | 65 | 100 | 87 | 81 | 57 | 37 | 12.4 | 9.0 | 12.4 |
| AGSECO | TAM 114 | 83 | 65 | 99 | 89 | 79 | 55 | 35 | 13.7 | 8.0 | 12.3 |
| Limagrain Cereal | LCS Mint | 82 | 66 | 96 | 90 | 76 | 57 | 38 | 12.7 | 7.0 | 12.0 |
| Husker Genetics | NE10589 (Ruth) | 82 | 68 | 103 | 84 | 73 | 58 | 38 | 13.2 | 3.0 | 13.0 |
| Limagrain Cereal | PSB13NEDH-14-71 | 82 | 63 | 105 | 85 | 73 | 58 | 35 | 13.2 | 6.0 | 12.5 |
| PlainsGold | Denali | 81 | 66 | 93 | 87 | 79 | 58 | 37 | 13.0 | 5.0 | 12.4 |
| Limagrain Cereal | LCH13NEDH-14-69 | 81 | 61 | 100 | 91 | 72 | 57 | 36 | 11.4 | 9.0 | 12.5 |
| PlainsGold | Sunshine | 81 | 61 | 100 | 86 | 78 | 55 | 38 | 12.1 | 9.0 | 12.5 |
| Dyna-Gro | HRX1652 | 80 | 66 | 90 | 87 | 77 | 57 | 37 | 13.4 | 9.0 | 12.5 |
| Limagrain Cereal | LCS Chrome | 80 | 64 | 96 | 82 | 77 | 56 | 35 | 15.0 | 7.0 | 12.8 |
| Limagrain Cereal | T158 | 79 | 60 | 94 | 84 | 78 | 56 | 37 | 11.9 | 5.0 | 12.7 |
| --- | N11MD2166W | 79 | 68 | 97 | 83 | 67 | 56 | 37 | 14.0 | 6.0 | 12.9 |
| PlainsGold | Avery | 79 | 60 | 92 | 78 | 87 | 57 | 36 | 13.9 | 11.0 | 12.1 |
| Syngenta AgriPro | SY Sunrise | 79 | 64 | 95 | 78 | 80 | 58 | 35 | 12.3 | 5.0 | 13.3 |
| CROPLAN | EXP HRW 15-14 | 79 | 60 | 93 | 89 | 74 | 56 | 36 | 12.7 | 11.0 | 12.2 |
| WESTBRED | WB4721 | 79 | 59 | 105 | 79 | 73 | 58 | 36 | 13.0 | 3.0 | 13.1 |
| WESTBRED | EXP16 | 79 | 67 | 92 | 83 | 75 | 58 | 38 | 12.0 | 5.0 | 12.8 |
| --- | Mattern | 78 | 55 | 96 | 82 | 79 | 55 | 37 | 12.5 | 7.0 | 13.6 |
| --- | N11MD2172 | 78 | 57 | 95 | 83 | 75 | 52 | 37 | 13.8 | 14.0 | 12.3 |
| Husker Genetics | Settler CL | 77 | 55 | 94 | 79 | 79 | 56 | 35 | 13.1 | 4.0 | 13.0 |
| Syngenta AgriPro | SY Wolf | 77 | 63 | 91 | 72 | 81 | 55 | 36 | 13.5 | 3.0 | 13.1 |
| --- | NE09517 | 77 | 60 | 91 | 79 | 78 | 58 | 39 | 12.4 | 4.0 | 12.8 |
| Limagrain Cereal | LCH13NEDH-5-59 | 77 | 57 | 98 | 78 | 74 | 57 | 38 | 15.4 | 8.0 | 12.5 |
| Limagrain Cereal | LCS Wizard | 76 | 54 | 96 | 74 | 78 | 57 | 36 | 15.6 | 8.0 | 12.8 |
| --- | NI10718W | 76 | 59 | 92 | 80 | 74 | 56 | 36 | 12.7 | 6.0 | 12.5 |
| --- | NW07505 | 76 | 56 | 89 | 86 | 73 | 54 | 39 | 13.8 | 7.0 | 12.5 |
| -- | Wesley | 75 | 55 | 93 | 78 | 73 | 56 | 34 | 13.1 | 6.0 | 13.3 |
| -- | Infinity CL | 75 | 56 | 89 | 80 | 74 | 57 | 37 | 13.3 | 9.0 | 12.8 |
| Husker Genetics | Overland | 75 | 58 | 91 | 71 | 80 | 58 | 38 | 13.6 | 2.0 | 12.8 |

WEST CENTRAL DRYLAND WHEAT VARIETY TESTS - 2016

KEITH, FURNAS, LINCOLN, AND PERKINS COUNTIES (CONTINUED)

| Brand | Variety | Avg Yield (bu/a) | Keith Yield (bu/a) | Furnas Yield (bu/a) | Lincoln Yield (bu/a) | Perkins Yield (bu/a) | Bushel Weight (lb/bu) | Plant Height (in) | Kernel Weight (000/lb) | Grain Protein (%) | Lodging (%) |
|--|---------------|------------------|--------------------|---------------------|----------------------|----------------------|-----------------------|-------------------|------------------------|-------------------|-------------|
| PlainsGold | Brawl CI Plus | 75 | 61 | 94 | 75 | 69 | 57 | 36 | 13.5 | 5.0 | 13.5 |
| --- | Warhorse | 75 | 58 | 88 | 85 | 67 | 54 | 36 | 15.6 | 0.0 | 13.2 |
| --- | NX04Y2107W | 75 | 52 | 89 | 82 | 76 | 54 | 37 | 12.3 | 6.0 | 13.8 |
| Husker Genetics | McGill | 74 | 56 | 91 | 72 | 77 | 54 | 36 | 14.5 | 8.0 | 12.7 |
| Syngenta AgriPro | SY Flint | 74 | 57 | 89 | 78 | 73 | 55 | 35 | 13.3 | 7.0 | 12.8 |
| --- | Judee | 70 | 53 | 83 | 78 | 64 | 55 | 35 | 14.0 | 3.0 | 13.1 |
| --- | Bearpaw | 69 | 51 | 84 | 75 | 67 | 54 | 37 | 16.4 | 7.0 | 12.9 |
| WESTBRED | Wb-Quake | 69 | 52 | 88 | 74 | 63 | 53 | 37 | 16.5 | 1.0 | 12.9 |
| -- | Mace | 64 | 49 | 71 | 74 | 63 | 54 | 36 | 16.0 | 7.0 | 13.2 |
| -- | Scout 66 | 54 | 47 | 58 | 55 | 54 | 55 | 40 | 12.8 | 14.0 | 13.5 |
| -- | Turkey | 52 | 47 | 56 | 52 | 54 | 56 | 42 | 14.4 | 14.0 | 14.3 |
| Average all entries | | 78 | 60 | 93 | 82 | 76 | 56 | 37 | 13.5 | 6.9 | 12.7 |
| Diff req for significance at 5% | | 6 | 6 | 10 | 10 | 8 | 1 | 1 | 0.7 | 9.0 | 0.6 |



WEST CENTRAL DRYLAND WHEAT VARIETY TESTS 2012- 2016

| Brand | Variety | Grain Yield (bu/a) | Bushel Weight (lb/bu) | Kernel Weight (000/lb) | Grain Protein (%) | Plant Height (inches) |
|---|----------------|--------------------------|-----------------------------|------------------------------|-------------------------|-----------------------------|
| Two year averages | | | | | | |
| PlainsGold | Antero | 75 | 55 | 13.3 | 12.6 | 35 |
| Syngenta AgriPro | Monument | 75 | 55 | 14.0 | 13.0 | 34 |
| Husker Genetics | Freeman | 73 | 54 | 13.8 | 13.2 | 34 |
| Husker Genetics | NE10589 (Ruth) | 72 | 56 | 13.7 | 13.4 | 37 |
| WESTBRED | WB-Grainfield | 72 | 56 | 13.2 | 12.8 | 36 |
| Husker Genetics | Robidoux | 71 | 55 | 13.7 | 13.5 | 35 |
| --- | N11MD2166W | 70 | 55 | 14.4 | 13.2 | 37 |
| Syngenta AgriPro | SY Sunrise | 70 | 56 | 12.4 | 13.8 | 33 |
| PlainsGold | Denali | 69 | 55 | 13.3 | 12.9 | 36 |
| Limagrain Cereal Seeds | LCH13NEDH-5-59 | 69 | 55 | 15.5 | 13.2 | 37 |
| WESTBRED | Winterhawk | 69 | 56 | 13.4 | 13.0 | 35 |
| PlainsGold | Byrd | 68 | 55 | 14.9 | 12.9 | 34 |
| --- | NI10718W | 67 | 54 | 13.0 | 13.4 | 35 |
| -- | Infinity CL | 66 | 55 | 13.6 | 13.3 | 36 |
| Husker Genetics | Overland | 66 | 57 | 13.9 | 13.4 | 36 |
| Limagrain Cereal Seeds | T158 | 65 | 55 | 12.0 | 13.3 | 34 |
| --- | Mattern | 65 | 53 | 12.8 | 14.4 | 36 |
| --- | NE09517 | 65 | 56 | 12.9 | 13.6 | 37 |
| Husker Genetics | Settler CL | 64 | 54 | 13.4 | 13.6 | 34 |
| --- | NX04Y2107W | 64 | 52 | 12.6 | 14.8 | 36 |
| PlainsGold | Avery | 63 | 53 | 14.7 | 12.8 | 35 |
| -- | Wesley | 63 | 53 | 13.7 | 14.0 | 33 |
| Limagrain Cereal Seeds | LCS Mint | 63 | 54 | 14.3 | 12.9 | 35 |
| Husker Genetics | McGill | 62 | 52 | 15.3 | 13.3 | 36 |
| --- | Warhorse | 61 | 49 | 16.7 | 14.1 | 35 |
| PlainsGold | Brawl CI Plus | 60 | 55 | 13.8 | 14.2 | 34 |
| Syngenta AgriPro | SY Wolf | 60 | 52 | 13.9 | 14.0 | 33 |
| --- | Bearpaw | 59 | 51 | 16.8 | 13.6 | 35 |
| Syngenta AgriPro | SY Flint | 59 | 54 | 14.2 | 13.7 | 34 |
| --- | Judee | 57 | 50 | 14.4 | 14.1 | 34 |
| Limagrain Cereal Seeds | LCS Wizard | 56 | 54 | 16.3 | 13.7 | 33 |
| -- | Mace | 52 | 51 | 16.8 | 14.1 | 34 |
| -- | Scout 66 | 50 | 55 | 13.1 | 14.1 | 40 |
| -- | Turkey | 48 | 55 | 14.4 | 14.6 | 42 |
| Average of all entries | | 64 | 54 | 13.5 | 14.1 | 35 |
| Difference required for significance at 5% | | 10 | 3 | 0.9 | 0.5 | 2 |

WEST CENTRAL DRYLAND WHEAT VARIETY TESTS 2012- 2016 (CONTINUED)

| Brand | Variety | Grain Yield (bu/a) | Bushel Weight (lb/bu) | Kernel Weight (000/lb) | Grain Protein (%) | Plant Height (inches) |
|---|----------------|--------------------------|-----------------------------|------------------------------|-------------------------|-----------------------------|
| Three year averages | | | | | | |
| Syngenta AgriPro | Monument | 70 | 56 | 14.0 | 13.4 | 33 |
| PlainsGold | Antero | 70 | 56 | 12.8 | 13.1 | 34 |
| PlainsGold | Byrd | 68 | 56 | 14.0 | 13.1 | 32 |
| PlainsGold | Denali | 68 | 56 | 13.1 | 13.3 | 34 |
| Husker Genetics | Robidoux | 67 | 57 | 13.5 | 14.1 | 33 |
| WESTBRED | WB-Grainfield | 67 | 57 | 13.1 | 13.4 | 34 |
| Husker Genetics | Freeman | 66 | 55 | 13.7 | 13.5 | 32 |
| Husker Genetics | NE10589 (Ruth) | 66 | 57 | 13.6 | 13.7 | 35 |
| WESTBRED | Winterhawk | 65 | 57 | 13.1 | 13.6 | 33 |
| -- | Infinity CL | 63 | 56 | 13.4 | 13.8 | 34 |
| Husker Genetics | Settler CL | 62 | 55 | 13.1 | 14.1 | 33 |
| --- | NE09517 | 62 | 57 | 12.8 | 14.1 | 34 |
| Limagrain Cereal Seeds | LCS Mint | 61 | 55 | 13.8 | 13.4 | 34 |
| -- | Wesley | 61 | 55 | 13.0 | 14.3 | 32 |
| Limagrain Cereal Seeds | T158 | 61 | 56 | 12.2 | 13.9 | 33 |
| Husker Genetics | Overland | 61 | 57 | 13.6 | 14.0 | 35 |
| --- | Warhorse | 61 | 52 | 15.8 | 14.4 | 33 |
| --- | Mattern | 61 | 54 | 12.6 | 14.9 | 34 |
| Syngenta AgriPro | SY Wolf | 60 | 54 | 13.7 | 14.2 | 32 |
| --- | NX04Y2107W | 60 | 54 | 12.4 | 15.2 | 34 |
| Husker Genetics | McGill | 59 | 54 | 14.6 | 13.7 | 34 |
| --- | Bearpaw | 59 | 53 | 16.2 | 14.0 | 33 |
| --- | Judee | 57 | 52 | 13.7 | 14.4 | 33 |
| Limagrain Cereal Seeds | LCS Wizard | 57 | 55 | 15.5 | 13.9 | 31 |
| PlainsGold | Brawl CI Plus | 57 | 56 | 13.8 | 14.8 | 32 |
| -- | Mace | 54 | 53 | 15.9 | 14.3 | 32 |
| -- | Scout 66 | 46 | 56 | 13.0 | 14.5 | 37 |
| -- | Turkey | 46 | 56 | 14.2 | 15.2 | 38 |
| Average of all entries | | 61 | 55 | 14.0 | 13.7 | 34 |
| Difference required for significance at 5% | | 9 | 3 | 1.0 | 0.5 | 2 |

WEST CENTRAL DRYLAND WHEAT VARIETY TESTS 2012- 2016 (CONTINUED)

| Brand | Variety | Grain Yield (bu/a) | Bushel Weight (lb/bu) | Kernel Weight (000/lb) | Grain Protein (%) | Plant Height (inches) |
|---|---------------|--------------------------|-----------------------------|------------------------------|-------------------------|-----------------------------|
| Four year averages | | | | | | |
| PlainsGold | Antero | 63 | 56 | 14.2 | 13.6 | 32 |
| PlainsGold | Byrd | 61 | 56 | 15.8 | 13.6 | 31 |
| PlainsGold | Denali | 60 | 56 | 14.6 | 13.8 | 32 |
| Husker Genetics | Robidoux | 60 | 56 | 14.8 | 14.5 | 32 |
| WESTBRED | WB-Grainfield | 60 | 56 | 14.9 | 13.9 | 32 |
| WESTBRED | Winterhawk | 59 | 56 | 14.3 | 14.0 | 32 |
| Husker Genetics | Freeman | 59 | 54 | 15.5 | 14.0 | 31 |
| -- | Infinity CL | 57 | 56 | 14.7 | 14.2 | 32 |
| --- | NE09517 | 57 | 56 | 14.2 | 14.4 | 32 |
| Husker Genetics | Overland | 57 | 57 | 14.8 | 14.3 | 33 |
| Husker Genetics | Settler CL | 56 | 54 | 14.6 | 14.3 | 31 |
| Limagrain Cereal Seeds | LCS Mint | 55 | 55 | 15.4 | 13.8 | 32 |
| -- | Wesley | 55 | 54 | 14.5 | 14.7 | 30 |
| Syngenta AgriPro | SY Wolf | 55 | 54 | 15.2 | 14.6 | 31 |
| Limagrain Cereal Seeds | T158 | 55 | 55 | 14.0 | 14.1 | 31 |
| --- | Mattern | 53 | 54 | 14.4 | 15.4 | 32 |
| Husker Genetics | McGill | 53 | 53 | 16.4 | 14.2 | 32 |
| PlainsGold | Brawl CI Plus | 52 | 55 | 14.8 | 15.0 | 31 |
| -- | Mace | 47 | 52 | 17.1 | 14.6 | 30 |
| -- | Scout 66 | 44 | 55 | 14.4 | 14.6 | 35 |
| -- | Turkey | 42 | 55 | 15.3 | 15.3 | 36 |
| Average of all entries | | 55 | 55 | 14.3 | 14.9 | 32 |
| Difference required for significance at 5% | | 7 | 2 | 1.0 | 0.5 | 2 |



WEST CENTRAL DRYLAND WHEAT VARIETY TESTS 2012- 2016 (CONTINUED)

| Brand | Variety | Grain Yield (bu/a) | Bushel Weight (lb/bu) | Kernel Weight (000/lb) | Grain Protein (%) | Plant Height (inches) |
|---|---------------|--------------------------|-----------------------------|------------------------------|-------------------------|-----------------------------|
| Five year averages | | | | | | |
| PlainsGold | Byrd | 64 | 57 | 15.9 | 13.0 | 32 |
| Husker Genetics | Robidoux | 63 | 57 | 14.9 | 13.8 | 33 |
| PlainsGold | Denali | 62 | 57 | 14.7 | 13.2 | 33 |
| Husker Genetics | Freeman | 62 | 56 | 15.5 | 13.5 | 32 |
| WESTBRED | Winterhawk | 61 | 58 | 14.3 | 13.4 | 32 |
| -- | Infinity CL | 59 | 57 | 14.7 | 13.5 | 33 |
| Limagrain Cereal Seeds | LCS Mint | 59 | 57 | 15.3 | 13.3 | 32 |
| Husker Genetics | Settler CL | 59 | 56 | 14.6 | 13.6 | 32 |
| Limagrain Cereal Seeds | T158 | 58 | 57 | 14.1 | 13.5 | 31 |
| Syngenta AgriPro | SY Wolf | 58 | 56 | 15.3 | 13.8 | 31 |
| Husker Genetics | Overland | 58 | 58 | 14.5 | 13.6 | 34 |
| PlainsGold | Brawl CI Plus | 57 | 57 | 14.7 | 14.3 | 31 |
| -- | Wesley | 56 | 55 | 14.6 | 14.2 | 31 |
| Husker Genetics | McGill | 56 | 55 | 16.2 | 13.5 | 33 |
| --- | Mattern | 55 | 55 | 14.3 | 14.6 | 33 |
| -- | Mace | 50 | 54 | 16.9 | 13.8 | 31 |
| -- | Scout 66 | 45 | 56 | 14.5 | 14.1 | 37 |
| -- | Turkey | 42 | 56 | 15.6 | 14.7 | 37 |
| Average of all entries | | 57 | 56 | 13.7 | 15.0 | 33 |
| Difference required for significance at 5% | | 6 | 1 | 1.0 | 0.5 | 2 |



WEST DRYLAND WHEAT VARIETY TESTS - 2016

CHEYENNE, DEUEL, BANNER, AND BOX BUTTE COUNTY

| Brand | Variety | Avg Yield (bu/a) | Cheyenne Yield (bu/a) | Deuel Yield (bu/a) | Banner Yield (bu/a) | Box Butte Yield (bu/a) | Bushel Weight (lb/bu) | Plant Height (in) | Kernel Weight (000/lb) | Grain Protein (%) |
|------------------|-----------------|------------------|-----------------------|--------------------|---------------------|------------------------|-----------------------|-------------------|------------------------|-------------------|
| PlainsGold | Antero | 63 | 64 | 63 | 62 | 64 | 59 | 31 | 14.6 | 11.6 |
| Dyna-Gro | HRX1652 | 61 | 57 | 62 | 63 | . | 59 | 30 | 15.3 | 12.5 |
| AGSECO | TAM 114 | 60 | 58 | 60 | 51 | 69 | 60 | 31 | 16.6 | 11.8 |
| Husker Genetics | Freeman | 59 | 58 | 58 | 55 | 65 | 58 | 31 | 15.9 | 12.0 |
| Husker Genetics | NE10589 (Ruth) | 59 | 60 | 59 | 58 | 57 | 60 | 32 | 15.6 | 12.4 |
| Limagrain Cereal | LCS Mint | 58 | 56 | 56 | 59 | 60 | 60 | 31 | 14.0 | 12.0 |
| Syngenta AgriPro | Monument | 58 | 59 | 56 | 54 | 62 | 58 | 30 | 16.3 | 12.3 |
| Husker Genetics | Robidoux | 57 | 53 | 58 | 53 | 62 | 58 | 32 | 16.7 | 12.3 |
| WESTBRED | WB-Grainfield | 57 | 50 | 60 | 53 | 65 | 60 | 31 | 15.2 | 12.2 |
| PlainsGold | Byrd | 56 | 53 | 53 | 58 | 59 | 58 | 30 | 16.7 | 11.6 |
| Limagrain Cereal | T158 | 56 | 55 | 52 | 58 | 60 | 60 | 30 | 14.1 | 12.1 |
| PlainsGold | Sunshine | 56 | 56 | 54 | 57 | 55 | 60 | 31 | 14.3 | 12.1 |
| PlainsGold | Denali | 55 | 53 | 58 | 52 | 57 | 60 | 31 | 15.8 | 12.0 |
| --- | NE09517 | 55 | 53 | 58 | 58 | 49 | 60 | 32 | 14.4 | 12.4 |
| Syngenta AgriPro | SY Sunrise | 55 | 46 | 60 | 52 | 61 | 60 | 29 | 14.2 | 13.0 |
| Limagrain Cereal | LCH13NEDH-14-69 | 55 | 65 | 56 | 49 | 50 | 60 | 30 | 13.7 | 12.4 |
| CRFW | Cowboy | 54 | 54 | 53 | 44 | 63 | 57 | 31 | 17.1 | 11.8 |
| CROPLAN | EXP HRW 15-14 | 54 | 56 | 54 | 52 | 53 | 59 | 30 | 15.4 | 11.8 |
| WESTBRED | EXP16 | 54 | 56 | 50 | 56 | 53 | 60 | 33 | 13.7 | 12.2 |
| PlainsGold | Brawl CI Plus | 53 | 52 | 51 | 52 | 55 | 60 | 31 | 15.4 | 12.8 |
| PlainsGold | Avery | 53 | 50 | 59 | 47 | 56 | 58 | 30 | 16.7 | 11.5 |
| --- | N11MD2172 | 53 | 59 | 48 | 52 | 52 | 58 | 33 | 16.8 | 12.2 |
| WESTBRED | WB4721 | 53 | 54 | 56 | 47 | 53 | 60 | 29 | 14.9 | 13.4 |
| -- | Infinity CL | 52 | 50 | 55 | 49 | 53 | 58 | 33 | 16.2 | 12.0 |
| WESTBRED | Winterhawk | 52 | 48 | 55 | 53 | 50 | 59 | 31 | 15.8 | 11.8 |
| -- | Panhandle | 52 | 48 | 52 | 55 | 53 | 58 | 34 | 16.2 | 12.6 |
| Syngenta AgriPro | SY Wolf | 52 | 52 | 53 | 50 | 54 | 59 | 31 | 17.1 | 12.7 |
| South Dakota | Redfield | 52 | 57 | 52 | 42 | 55 | 59 | 30 | 16.3 | 12.7 |
| --- | N11MD2166W | 52 | 58 | 51 | 45 | 53 | 58 | 35 | 16.7 | 12.4 |
| Limagrain Cereal | LCH13NEDH-5-59 | 52 | 49 | 50 | 53 | 57 | 59 | 31 | 18.9 | 12.3 |
| Limagrain Cereal | LCS Chrome | 52 | 48 | 61 | 46 | 52 | 59 | 30 | 17.0 | 13.1 |
| Husker Genetics | Overland | 51 | 48 | 52 | 47 | 57 | 59 | 32 | 16.3 | 12.0 |
| --- | Mattern | 51 | 53 | 51 | 48 | 50 | 59 | 32 | 14.5 | 13.3 |
| --- | Judee | 51 | 52 | 44 | 50 | 57 | 59 | 30 | 16.8 | 12.8 |
| Limagrain Cereal | PSB13NEDH-14-71 | 51 | 55 | 49 | 51 | 47 | 60 | 30 | 14.5 | 12.6 |
| --- | NE12589 | 51 | 47 | 53 | 42 | 61 | 59 | 30 | 16.2 | 12.5 |
| Husker Genetics | Settler CL | 50 | 47 | 53 | 48 | 51 | 58 | 29 | 15.4 | 12.0 |
| --- | Warhorse | 50 | 54 | 43 | 52 | 51 | 58 | 30 | 17.8 | 13.3 |

WEST DRYLAND WHEAT VARIETY TESTS - 2016 (CONTINUED)

CHEYENNE, DEUEL, BANNER, AND BOX BUTTE COUNTY

| Brand | Variety | Avg Yield (bu/a) | Cheyenne Yield (bu/a) | Deuel Yield (bu/a) | Banner Yield (bu/a) | Box Butte Yield (bu/a) | Bushel Weight (lb/bu) | Plant Height (in) | Kernel Weight (000/lb) | Grain Protein (%) |
|--|-------------|------------------|-----------------------|--------------------|---------------------|------------------------|-----------------------|-------------------|------------------------|-------------------|
| -- | Wesley | 49 | 50 | 40 | 51 | 53 | 58 | 29 | 16.0 | 13.1 |
| --- | NX04Y2107W | 49 | 53 | 48 | 44 | 50 | 59 | 32 | 14.3 | 13.1 |
| Limagrain Cereal | LCS Compass | 49 | 46 | 44 | 53 | 51 | 60 | 31 | 16.3 | 12.2 |
| South Dakota | Ideal | 47 | 50 | 43 | 47 | 47 | 59 | 30 | 18.0 | 12.3 |
| --- | NW07505 | 47 | 40 | 48 | 49 | 50 | 58 | 32 | 16.4 | 12.2 |
| NuPride | Camelot | 46 | 41 | 52 | 39 | 52 | 59 | 30 | 14.0 | 12.4 |
| --- | NI10718W | 46 | 48 | 48 | 37 | 50 | 59 | 30 | 15.3 | 12.2 |
| -- | Buckskin | 45 | 45 | 40 | 45 | 51 | 60 | 35 | 16.0 | 12.5 |
| -- | Pronghorn | 45 | 44 | 48 | 40 | 49 | 59 | 36 | 16.5 | 12.5 |
| -- | Scout 66 | 44 | 46 | 46 | 44 | 41 | 59 | 38 | 15.1 | 12.7 |
| -- | Goodstreak | 44 | 45 | 38 | 43 | 48 | 60 | 35 | 17.0 | 12.6 |
| WESTBRED | WB-Quake | 44 | 48 | 38 | 44 | 46 | 58 | 30 | 20.1 | 12.9 |
| -- | Mace | 43 | 38 | 43 | 43 | 46 | 57 | 28 | 19.2 | 12.2 |
| --- | Bearpaw | 43 | 45 | 42 | 37 | 46 | 57 | 29 | 19.7 | 12.6 |
| -- | Alliance | 42 | 38 | 45 | 33 | 51 | 57 | 32 | 17.2 | 11.9 |
| -- | Turkey | 37 | 36 | 42 | 34 | 34 | 59 | 37 | 17.3 | 13.3 |
| Average of all entries | | 52 | 51 | 51 | 49 | 54 | 59 | 31 | 16 | 12 |
| Diff. required for significance at 5% | | 6 | 16 | 10 | 12 | 6 | 1 | 2 | 1.0 | 0.6 |



WEST DRYLAND WHEAT VARIETY TESTS 2012-2016

| Brand | Variety | Grain Yield (bu/a) | Bushel Weight (lb/bu) | Kernel Weight (000/lb) | Grain Protein (%) | Plant Height (inches) |
|---------------------------|----------------|--------------------|-----------------------|------------------------|-------------------|-----------------------|
| Two year averages* | | | | | | |
| PlainsGold | Antero | 44 | 60 | 13.9 | 11.1 | 31 |
| Husker Genetics | NE10589 (Ruth) | 42 | 61 | 14.6 | 12.5 | 32 |
| Syngenta AgriPro | Monument | 42 | 60 | 15.2 | 12.0 | 31 |
| Husker Genetics | Freeman | 41 | 59 | 14.9 | 12.0 | 32 |
| Limagrain Cereal Seeds | LCS Mint | 41 | 61 | 13.6 | 11.5 | 31 |
| WESTBRED | WB-Grainfield | 40 | 61 | 14.1 | 12.4 | 31 |
| Husker Genetics | Robidoux | 40 | 60 | 15.4 | 12.0 | 31 |
| Limagrain Cereal Seeds | T158 | 40 | 61 | 13.3 | 12.4 | 29 |
| CRFW | Cowboy | 39 | 59 | 16.1 | 11.3 | 32 |
| PlainsGold | Denali | 39 | 60 | 15.1 | 11.5 | 32 |
| PlainsGold | Byrd | 39 | 60 | 15.9 | 11.4 | 31 |
| --- | NE09517 | 38 | 61 | 13.7 | 12.6 | 33 |
| South Dakota AES | Redfield | 38 | 61 | 15.5 | 12.3 | 30 |
| Limagrain Cereal Seeds | LCH13NEDH-5-59 | 38 | 60 | 17.2 | 11.8 | 33 |
| --- | N11MD2166W | 38 | 60 | 16.1 | 12.4 | 34 |
| -- | Panhandle | 38 | 60 | 15.0 | 12.7 | 36 |
| Husker Genetics | Overland | 38 | 61 | 15.4 | 12.3 | 33 |
| WESTBRED | Winterhawk | 37 | 60 | 14.6 | 11.3 | 32 |
| PlainsGold | Avery | 37 | 59 | 15.7 | 11.2 | 32 |
| Syngenta AgriPro | SY Wolf | 37 | 60 | 16.1 | 12.5 | 30 |
| -- | Infinity CL | 37 | 60 | 14.9 | 12.3 | 33 |
| PlainsGold | Brawl CI Plus | 36 | 61 | 15.1 | 13.6 | 31 |
| --- | Warhorse | 36 | 59 | 17.3 | 13.0 | 32 |
| --- | Mattern | 36 | 60 | 13.8 | 13.8 | 32 |
| --- | NX04Y2107W | 35 | 60 | 13.6 | 13.6 | 32 |
| --- | NI10718W | 35 | 60 | 14.1 | 12.5 | 32 |
| Husker Genetics | Settler CL | 34 | 59 | 14.3 | 12.2 | 31 |
| -- | Wesley | 34 | 59 | 14.7 | 13.4 | 29 |
| --- | Judee | 34 | 59 | 16.1 | 12.9 | 31 |
| South Dakota AES | Ideal | 34 | 60 | 17.3 | 11.8 | 31 |
| -- | Pronghorn | 34 | 60 | 15.5 | 12.5 | 38 |
| NuPride | Camelot | 33 | 60 | 13.4 | 12.6 | 32 |
| WESTBRED | WB-Quake | 33 | 60 | 19.1 | 12.0 | 32 |
| -- | Buckskin | 32 | 60 | 15.3 | 12.5 | 39 |
| -- | Goodstreak | 32 | 60 | 15.9 | 12.7 | 37 |
| --- | Bearpaw | 31 | 59 | 18.1 | 12.5 | 31 |

WEST DRYLAND WHEAT VARIETY TESTS 2012-2016 (CONTINUED)

| Brand | Variety | Grain Yield (bu/a) | Bushel Weight (lb/bu) | Kernel Weight (000/lb) | Grain Protein (%) | Plant Height (inches) |
|---|----------|--------------------|-----------------------|------------------------|-------------------|-----------------------|
| Two year averages (continued) | | | | | | |
| -- | Alliance | 31 | 59 | 16.1 | 12.1 | 32 |
| -- | Scout 66 | 30 | 60 | 14.3 | 12.9 | 40 |
| -- | Mace | 30 | 58 | 17.7 | 12.5 | 30 |
| -- | Turkey | 27 | 60 | 16.4 | 13.3 | 38 |
| Average of all entries | | 36 | 60 | 15.4 | 12 | 32 |
| Difference required for significance at 5% | | 6 | 1 | 0.9 | 1.0 | 3 |

* The 2015 grain yield for most rain-fed sites in the west (Panhandle) were under estimated by a factor of 2.2046. This has reduced the 2-years mean of the varieties tested. However, the ranking of the varieties are expected to remain the same.

| Three year averages | | | | | | |
|---|----------------|-----------|-----------|-------------|-------------|-----------|
| PlainsGold | Antero | 49 | 61 | 13.6 | 11.4 | 29 |
| Husker Genetics | NE10589 (Ruth) | 47 | 61 | 14.3 | 12.8 | 31 |
| CRFW | Cowboy | 46 | 59 | 15.1 | 11.6 | 31 |
| Limagrain Cereal Seeds | LCS Mint | 46 | 61 | 13.3 | 11.8 | 30 |
| PlainsGold | Denali | 46 | 61 | 14.5 | 11.8 | 31 |
| Husker Genetics | Robidoux | 45 | 59 | 14.9 | 12.5 | 30 |
| Husker Genetics | Freeman | 45 | 59 | 14.5 | 12.3 | 30 |
| PlainsGold | Byrd | 45 | 60 | 15.4 | 11.8 | 30 |
| Husker Genetics | Overland | 44 | 60 | 14.6 | 12.6 | 32 |
| --- | NE09517 | 44 | 61 | 13.3 | 12.6 | 31 |
| -- | Panhandle | 43 | 59 | 14.4 | 12.8 | 35 |
| WESTBRED | WB-Grainfield | 43 | 60 | 13.9 | 12.7 | 30 |
| Limagrain Cereal Seeds | T158 | 43 | 61 | 13.1 | 12.4 | 28 |
| WESTBRED | Winterhawk | 43 | 60 | 14.0 | 11.6 | 30 |
| --- | Warhorse | 42 | 59 | 16.4 | 13.2 | 30 |
| PlainsGold | Brawl CI Plus | 42 | 61 | 14.7 | 13.6 | 30 |
| --- | Mattern | 41 | 59 | 13.9 | 13.9 | 31 |
| Husker Genetics | Settler CL | 40 | 59 | 13.8 | 12.6 | 29 |
| --- | NX04Y2107W | 40 | 59 | 13.4 | 13.6 | 30 |
| NuPride | Camelot | 39 | 60 | 13.0 | 12.9 | 31 |
| --- | Judee | 38 | 59 | 15.2 | 13.0 | 30 |
| -- | Wesley | 38 | 59 | 14.3 | 13.6 | 28 |
| -- | Pronghorn | 37 | 60 | 14.8 | 12.8 | 35 |
| -- | Buckskin | 37 | 60 | 14.7 | 12.6 | 36 |
| -- | Goodstreak | 37 | 60 | 15.1 | 12.9 | 35 |
| --- | Bearpaw | 37 | 59 | 16.7 | 12.7 | 29 |
| -- | Alliance | 37 | 59 | 15.1 | 12.4 | 30 |
| -- | Scout 66 | 34 | 60 | 13.8 | 13.1 | 37 |
| -- | Turkey | 32 | 60 | 15.5 | 13.7 | 36 |
| Average of all entries | | 41 | 60 | 14.5 | 12.7 | 31 |
| Difference required for significance at 5% | | 8 | 1 | 1.0 | 0.8 | 2 |

WEST DRYLAND WHEAT VARIETY TESTS 2012-2016 (CONTINUED)

| Brand | Variety | Grain Yield (bu/a) | Bushel Weight (lb/bu) | Kernel Weight (000/lb) | Grain Protein (%) | Plant Height (inches) |
|---|---------------|--------------------|-----------------------|------------------------|-------------------|-----------------------|
| Four year averages | | | | | | |
| PlainsGold | Antero | 48 | 60 | 14.0 | 11.6 | 29 |
| CRFW | Cowboy | 46 | 59 | 15.8 | 11.8 | 30 |
| Limagrain Cereal Seeds | LCS Mint | 46 | 61 | 13.6 | 11.9 | 29 |
| PlainsGold | Byrd | 45 | 59 | 15.7 | 11.9 | 30 |
| PlainsGold | Denali | 45 | 60 | 14.8 | 12.0 | 31 |
| Husker Genetics | Robidoux | 45 | 59 | 15.2 | 12.5 | 30 |
| Husker Genetics | Freeman | 44 | 58 | 14.7 | 12.3 | 29 |
| WESTBRED | WB-Grainfield | 43 | 60 | 14.4 | 12.6 | 29 |
| Husker Genetics | Overland | 43 | 59 | 15.2 | 12.6 | 31 |
| --- | NE09517 | 43 | 60 | 13.7 | 12.5 | 31 |
| -- | Panhandle | 43 | 59 | 14.9 | 12.8 | 33 |
| Limagrain Cereal Seeds | T158 | 43 | 60 | 13.4 | 12.3 | 28 |
| WESTBRED | Winterhawk | 43 | 60 | 14.2 | 11.8 | 30 |
| PlainsGold | Brawl CI Plus | 42 | 60 | 14.6 | 13.2 | 29 |
| --- | Mattern | 41 | 58 | 14.8 | 13.6 | 30 |
| Husker Genetics | Settler CL | 40 | 59 | 14.0 | 12.5 | 29 |
| NuPride | Camelot | 40 | 59 | 13.4 | 12.7 | 30 |
| -- | Wesley | 39 | 58 | 14.5 | 13.4 | 27 |
| -- | Goodstreak | 38 | 59 | 15.6 | 12.8 | 34 |
| -- | Buckskin | 37 | 60 | 15.0 | 12.6 | 35 |
| -- | Pronghorn | 37 | 60 | 15.4 | 12.7 | 35 |
| -- | Alliance | 37 | 59 | 15.7 | 12.4 | 30 |
| -- | Scout 66 | 34 | 59 | 14.1 | 13.0 | 36 |
| -- | Turkey | 32 | 60 | 16.0 | 13.4 | 34 |
| Average of all entries | | 41 | 59 | 14.7 | 12.5 | 31 |
| Difference required for significance at 5% | | 4 | 1 | 0.8 | 0.7 | 2 |



WEST DRYLAND WHEAT VARIETY TESTS 2012-2016 (CONTINUED)

| Brand | Variety | Grain Yield (bu/a) | Bushel Weight (lb/bu) | Kernel Weight (000/lb) | Grain Protein (%) | Plant Height (inches) |
|---|---------------|--------------------|-----------------------|------------------------|-------------------|-----------------------|
| Five year averages | | | | | | |
| PlainsGold | Byrd | 45 | 60 | 15.5 | 11.8 | 29 |
| Limagrain Cereal Seeds | LCS Mint | 45 | 61 | 13.4 | 11.9 | 29 |
| Husker Genetics | Robidoux | 44 | 60 | 15.0 | 12.3 | 29 |
| PlainsGold | Denali | 44 | 60 | 14.7 | 11.9 | 30 |
| Husker Genetics | Freeman | 43 | 58 | 14.8 | 12.3 | 29 |
| -- | Panhandle | 42 | 59 | 14.8 | 12.8 | 32 |
| PlainsGold | Brawl CI Plus | 42 | 60 | 14.3 | 13.1 | 29 |
| Husker Genetics | Overland | 42 | 60 | 14.9 | 12.5 | 30 |
| WESTBRED | Winterhawk | 42 | 60 | 14.0 | 11.9 | 29 |
| Limagrain Cereal Seeds | T158 | 42 | 61 | 13.2 | 12.2 | 27 |
| Husker Genetics | Settler CL | 40 | 59 | 13.8 | 12.5 | 29 |
| --- | Mattern | 40 | 59 | 14.6 | 13.4 | 29 |
| NuPride | Camelot | 39 | 59 | 13.4 | 12.7 | 30 |
| -- | Wesley | 38 | 59 | 14.2 | 13.2 | 27 |
| -- | Goodstreak | 38 | 60 | 15.3 | 12.8 | 33 |
| -- | Buckskin | 37 | 60 | 15.0 | 12.5 | 34 |
| -- | Pronghorn | 37 | 60 | 15.5 | 12.7 | 34 |
| -- | Alliance | 36 | 59 | 15.9 | 12.5 | 29 |
| -- | Scout 66 | 34 | 60 | 14.1 | 12.9 | 34 |
| -- | Turkey | 32 | 60 | 15.9 | 13.4 | 33 |
| Average of all entries | | 40 | 59 | 15 | 13 | 30 |
| Difference required for significance at 5% | | 3 | 1 | 0.7 | 0.6 | 2 |



IRRIGATED WHEAT VARIETY TEST - 2016

BOX BUTTE AND CHASE COUNTIES

| Brand | Variety | Average Yield (bu/ac) | Box Butte Yield (bu/ac) | Chase Yield (bu/a) | Bushel Weight (lb/bu) | Height (in) | Kernel Weight (000/lb) | Grain Protein (%) |
|--|-----------------|--------------------------|----------------------------|-----------------------|--------------------------|----------------|---------------------------|----------------------|
| WESTBRED | WB-Grainfield | 94 | 94 | 93 | 56 | 37 | 16.8 | 15.0 |
| PlainsGold | Antero | 94 | 99 | 89 | 57 | 34 | 14.0 | 13.3 |
| WESTBRED | WB4303 | 94 | 97 | 90 | 54 | 35 | 16.3 | 15.4 |
| PlainsGold | Brawl CI Plus | 92 | 79 | 105 | 58 | 35 | 14.1 | 15.4 |
| Syngenta AgriPro | SY Wolf | 92 | 98 | 85 | 55 | 36 | 14.9 | 14.8 |
| WESTBRED | Winterhawk | 91 | 93 | 89 | 56 | 37 | 15.8 | 14.8 |
| Limagrain Cereal Seeds | LCH13NEDH-14-69 | 91 | 90 | 91 | 57 | 35 | 14.9 | 14.6 |
| PlainsGold | Byrd | 90 | 90 | 90 | 56 | 35 | 16.4 | 14.4 |
| WESTBRED | WB4458 | 90 | 77 | 102 | 57 | 36 | 14.0 | 15.0 |
| Syngenta AgriPro | SY Sunrise | 90 | 85 | 95 | 58 | 35 | 14.4 | 14.4 |
| Limagrain Cereal Seeds | LCS Chrome | 89 | 91 | 86 | 55 | 36 | 17.8 | 14.7 |
| AGSECO | TAM 114 | 88 | 93 | 83 | 58 | 36 | 15.3 | 14.8 |
| PlainsGold | Denali | 87 | 94 | 80 | 55 | 37 | 15.4 | 14.5 |
| PlainsGold | Avery | 87 | 87 | 86 | 55 | 35 | 16.3 | 14.2 |
| Limagrain Cereal Seeds | LCS Wizard | 86 | 86 | 86 | 56 | 37 | 17.2 | 14.5 |
| WESTBRED | WB-Cedar | 85 | 75 | 95 | 58 | 34 | 13.3 | 14.6 |
| --- | NX04Y2107W | 85 | 83 | 86 | 55 | 37 | 14.4 | 15.7 |
| PlainsGold | Sunshine | 85 | 87 | 82 | 56 | 35 | 13.3 | 15.2 |
| Limagrain Cereal Seeds | PSB13NEDH-14-71 | 84 | 88 | 80 | 57 | 36 | 14.7 | 14.5 |
| Limagrain Cereal Seeds | T158 | 83 | 82 | 84 | 56 | 35 | 13.3 | 14.7 |
| Husker Genetics | Settler CL | 82 | 81 | 83 | 56 | 36 | 14.0 | 14.5 |
| --- | Mattern | 82 | 77 | 86 | 56 | 35 | 14.5 | 15.4 |
| Limagrain Cereal Seeds | LCS Mint | 82 | 88 | 75 | 57 | 36 | 15.2 | 14.7 |
| CRFW | Cowboy | 82 | 93 | 70 | 54 | 35 | 17.1 | 15.0 |
| --- | NI10718W | 82 | 83 | 81 | 56 | 36 | 14.0 | 14.1 |
| Syngenta AgriPro | SY Flint | 82 | 83 | 81 | 56 | 36 | 15.4 | 15.1 |
| Husker Genetics | Robidoux | 80 | 76 | 84 | 56 | 36 | 15.6 | 14.8 |
| Husker Genetics | NE10589 (Ruth) | 79 | 73 | 84 | 58 | 37 | 13.9 | 14.2 |
| --- | N11MD2172 | 79 | 84 | 74 | 55 | 36 | 16.4 | 14.1 |
| -- | Wesley | 78 | 79 | 76 | 56 | 35 | 14.8 | 14.9 |
| Dyna-Gro | HRX1652 | 78 | 87 | 69 | 54 | 36 | 14.6 | 14.0 |
| --- | NE07531 | 77 | 76 | 77 | 56 | 37 | 16.1 | 15.4 |
| -- | Anton (W) | 76 | 85 | 66 | 56 | 36 | 16.4 | 14.9 |
| --- | Warhorse | 75 | 83 | 67 | 53 | 36 | 19.5 | 16.6 |
| Limagrain Cereal Seeds | LCH13NEDH-5-59 | 74 | 79 | 69 | 55 | 37 | 19.6 | 15.3 |
| CROPLAN | EXP HRW 15-14 | 74 | 87 | 61 | 52 | 36 | 16.5 | 15.0 |
| --- | NE09517 | 73 | 68 | 78 | 57 | 38 | 14.4 | 15.0 |
| --- | Bearpaw | 70 | 77 | 63 | 54 | 35 | 17.4 | 14.5 |
| --- | Judee | 66 | 79 | 53 | 54 | 35 | 16.2 | 15.3 |
| Average of all entries | | 83 | 85 | 81 | 56 | 36 | 15.5 | 14.8 |
| Diff. required for significance at 5% | | 18 | 20 | 12 | 3 | 2 | 2.1 | 1.1 |

IRRIGATED WHEAT VARIETY TESTS 2012-2016

| Brand | Variety | Grain Yield (bu/a) | Bushel Weight (lb/bu) | Kernel Weight (000/lb) | Grain Protein (%) | Plant Height (inches) |
|---|----------------|-----------------------|--------------------------|---------------------------|----------------------|--------------------------|
| Two year averages | | | | | | |
| WESTBRED | WB-Grainfield | 110 | 57 | 15.6 | 14.7 | 37 |
| PlainsGold | Antero | 106 | 57 | 13.7 | 13.7 | 34 |
| WESTBRED | WB4458 | 106 | 58 | 13.5 | 14.4 | 36 |
| PlainsGold | Denali | 106 | 56 | 14.3 | 13.9 | 37 |
| PlainsGold | Brawl CI Plus | 106 | 59 | 14.2 | 14.7 | 35 |
| PlainsGold | Byrd | 105 | 57 | 15.6 | 13.9 | 35 |
| WESTBRED | WB-Cedar | 105 | 58 | 12.6 | 13.9 | 34 |
| Syngenta AgriPro | SY Wolf | 103 | 57 | 14.2 | 14.7 | 36 |
| --- | NX04Y2107W | 102 | 56 | 13.2 | 15.1 | 37 |
| Limagrain Cereal Seeds | LCS Wizard | 102 | 57 | 15.5 | 14.0 | 37 |
| -- | Wesley | 98 | 56 | 14.5 | 14.6 | 35 |
| Husker Genetics | NE10589 (Ruth) | 98 | 57 | 13.8 | 14.2 | 37 |
| Husker Genetics | Settler CL | 97 | 57 | 13.5 | 14.2 | 36 |
| Limagrain Cereal Seeds | T158 | 97 | 57 | 13.1 | 14.0 | 35 |
| CRFW | Cowboy | 97 | 57 | 15.4 | 14.4 | 35 |
| --- | NE07531 | 96 | 57 | 15.7 | 14.7 | 37 |
| Limagrain Cereal Seeds | LCS Mint | 96 | 58 | 14.0 | 14.4 | 36 |
| Husker Genetics | Robidoux | 95 | 57 | 15.1 | 14.9 | 36 |
| --- | Mattern | 93 | 56 | 14.5 | 15.6 | 35 |
| -- | Anton (W) | 92 | 57 | 15.5 | 14.8 | 36 |
| --- | NE09517 | 85 | 57 | 14.2 | 14.8 | 38 |
| --- | Warhorse | 84 | 55 | 17.1 | 16.1 | 36 |
| --- | Bearpaw | 80 | 55 | 16.5 | 15.2 | 35 |
| --- | Judee | 78 | 56 | 15.6 | 15.6 | 35 |
| Average of all entries | | 97 | 57 | 14.6 | 14.6 | 36 |
| Difference required for significance at 5% | | 9 | NS | 1.7 | 1.1 | NS |



IRRIGATED WHEAT VARIETY TESTS 2012-2016 (CONTINUED)

| Brand | Variety | Grain Yield (bu/a) | Bushel Weight (lb/bu) | Kernel Weight (000/lb) | Grain Protein (%) | Plant Height (inches) |
|---|---------------|-----------------------|--------------------------|---------------------------|----------------------|--------------------------|
| Three year averages | | | | | | |
| Syngenta AgriPro | SY Wolf | 107 | 58 | 14.2 | 14.7 | 32 |
| WESTBRED | WB-Cedar | 106 | 59 | 12.6 | 13.9 | 31 |
| PlainsGold | Denali | 105 | 58 | 14.3 | 13.9 | 33 |
| PlainsGold | Antero | 105 | 58 | 13.7 | 13.7 | 31 |
| PlainsGold | Byrd | 105 | 58 | 15.6 | 13.9 | 32 |
| PlainsGold | Brawl CI Plus | 104 | 60 | 14.2 | 14.7 | 32 |
| -- | Wesley | 101 | 58 | 14.5 | 14.6 | 32 |
| Limagrain Cereal Seeds | T158 | 99 | 59 | 13.1 | 14.0 | 32 |
| -- | Anton (W) | 98 | 59 | 15.5 | 14.8 | 32 |
| --- | Mattern | 98 | 58 | 14.5 | 15.6 | 32 |
| Husker Genetics | Settler CL | 97 | 58 | 13.5 | 14.2 | 32 |
| --- | NE07531 | 97 | 58 | 15.7 | 14.7 | 33 |
| Husker Genetics | Robidoux | 96 | 58 | 15.1 | 14.9 | 32 |
| --- | NE09517 | 94 | 58 | 14.2 | 14.8 | 33 |
| Average of all entries | | 101 | 58 | 14.3 | 14.5 | 32 |
| Difference required for significance at 5% | | 10 | 1 | 0.8 | 0.9 | 2 |
| Four year averages | | | | | | |
| WESTBRED | WB-Cedar | 104 | 59 | 12.4 | 13.6 | 31 |
| Syngenta AgriPro | SY Wolf | 103 | 58 | 14.6 | 14.2 | 32 |
| PlainsGold | Brawl CI Plus | 102 | 59 | 14.3 | 14.4 | 33 |
| PlainsGold | Denali | 101 | 58 | 14.6 | 13.7 | 34 |
| PlainsGold | Byrd | 101 | 58 | 16.3 | 13.7 | 33 |
| Limagrain Cereal Seeds | T158 | 97 | 58 | 13.3 | 13.8 | 32 |
| -- | Anton (W) | 96 | 58 | 16.1 | 14.7 | 33 |
| -- | Wesley | 96 | 58 | 15.2 | 14.6 | 32 |
| --- | Mattern | 96 | 58 | 14.7 | 15.0 | 32 |
| Husker Genetics | Settler CL | 95 | 58 | 13.8 | 14.1 | 33 |
| --- | NE07531 | 95 | 58 | 15.6 | 14.5 | 33 |
| Husker Genetics | Robidoux | 93 | 58 | 15.5 | 14.6 | 32 |
| Average of all entries | | 98 | 58 | 14.4 | 14.7 | 32 |
| Difference required for significance at 5% | | 10 | 1 | 0.9 | 0.6 | 1 |

IRRIGATED WHEAT VARIETY TESTS 2012-2016 (CONTINUED)

| Brand | Variety | Grain Yield (bu/a) | Bushel Weight (lb/bu) | Kernel Weight (000/lb) | Grain Protein (%) | Plant Height (inches) |
|---|---------------|-----------------------|--------------------------|---------------------------|----------------------|--------------------------|
| Five year averages | | | | | | |
| Syngenta AgriPro | SY Wolf | 103 | 58 | 14.5 | 13.6 | 32 |
| WESTBRED | WB-Cedar | 103 | 59 | 12.2 | 13.7 | 30 |
| PlainsGold | Denali | 101 | 58 | 14.1 | 13.1 | 33 |
| PlainsGold | Brawl CI Plus | 101 | 60 | 13.9 | 14.4 | 32 |
| PlainsGold | Byrd | 99 | 58 | 15.1 | 13.4 | 31 |
| -- | Wesley | 97 | 58 | 14.5 | 14.2 | 31 |
| -- | Anton (W) | 96 | 58 | 15.3 | 14.3 | 31 |
| --- | Mattern | 96 | 57 | 14.0 | 14.2 | 31 |
| Husker Genetics | Settler CL | 95 | 58 | 13.5 | 13.6 | 32 |
| Husker Genetics | Robidoux | 94 | 58 | 15.3 | 14.0 | 32 |
| Average of all entries | | 97 | 58 | 14.1 | 14.5 | 32 |
| Difference required for significance at 5% | | 6 | 1 | 1.0 | 0.8 | 1 |



2016 WHEAT GRAIN YIELD RANK AT ALL LOCATIONS

| Variety | Saline | Saunders | Lancaster | Clay | Keith | Furnas | Lincoln | Perkins | Cheyenne | Deuel | Banner | Box Butte RF | Box Butte Irr | Chase Irr |
|-----------------|--------|----------|-----------|------|-------|--------|---------|---------|----------|-------|--------|--------------|---------------|-----------|
| "1863" | 65 | 59 | 64 | 49 | - | - | - | - | - | - | - | - | - | - |
| AC Emerson | 56 | 46 | 31 | 15 | - | - | - | - | - | - | - | - | - | - |
| Alliance | - | - | - | - | - | - | - | - | 38 | 45 | 33 | 51 | - | - |
| Antero | - | - | - | - | 70 | 106 | 96 | 88 | 64 | 63 | 62 | 64 | 99 | 89 |
| Anton (W) | - | - | - | - | - | - | - | - | - | - | - | - | 85 | 66 |
| Avery | - | - | - | - | 60 | 92 | 78 | 87 | 50 | 59 | 47 | 56 | 87 | 86 |
| Bearpaw | - | - | - | - | 51 | 84 | 75 | 67 | 45 | 42 | 37 | 46 | 77 | 63 |
| Brawl CI Plus | - | - | - | - | 61 | 94 | 75 | 69 | 52 | 52 | 52 | 55 | 79 | 105 |
| Buckskin | - | - | - | - | - | - | - | - | 45 | 40 | 45 | 51 | - | - |
| Byrd | - | - | - | - | 65 | 102 | 83 | 83 | 53 | 53 | 58 | 59 | 90 | 90 |
| Camelot | 69 | 53 | 49 | - | - | - | - | - | 41 | 52 | 39 | 52 | - | - |
| Cowboy | - | - | - | - | - | - | - | - | 54 | 53 | 44 | 63 | 93 | 71 |
| Denali | - | - | - | - | 66 | 93 | 87 | 79 | 53 | 58 | 52 | 57 | 94 | 80 |
| EXP HRW 15-14 | - | - | - | - | 60 | 94 | 89 | 74 | 56 | 54 | 52 | 53 | 87 | 61 |
| EXP16 | - | - | - | - | 67 | 92 | 83 | 75 | 56 | 51 | 56 | 53 | - | - |
| Freeman | 78 | 77 | 78 | 51 | 66 | 107 | 95 | 87 | 58 | 58 | 55 | 65 | - | - |
| Goodstreak | - | - | - | - | - | - | - | - | 45 | 38 | 43 | 48 | - | - |
| HRX1652 | 73 | 46 | 66 | 40 | 66 | 90 | 87 | 77 | 57 | 62 | 63 | - | 87 | 69 |
| Ideal | - | - | - | - | - | - | - | - | 50 | 43 | 47 | 47 | - | - |
| Infinity CL | - | - | - | - | 56 | 89 | 80 | 74 | 50 | 55 | 49 | 53 | - | - |
| Judee | - | - | - | - | 53 | 83 | 78 | 64 | 52 | 44 | 50 | 57 | 80 | 53 |
| KS11HW39-5-4 | - | - | - | - | 73 | 101 | 96 | 85 | - | - | - | - | - | - |
| KS12H56-6-4 | - | - | - | - | 62 | 101 | 93 | 84 | - | - | - | - | - | - |
| LCH13NEDH-14-69 | 71 | 80 | 74 | 55 | 61 | 100 | 91 | 72 | 66 | 56 | 49 | 50 | 90 | 91 |
| LCH13NEDH-5-59 | - | - | - | - | 57 | 98 | 79 | 74 | 49 | 50 | 53 | 57 | 79 | 69 |
| LCS Chrome | - | - | - | 48 | 64 | 96 | 82 | 77 | 48 | 61 | 46 | 52 | 91 | 86 |
| LCS Compass | - | - | - | - | - | - | - | - | 46 | 44 | 53 | 51 | - | - |
| LCS Mint | - | - | - | 41 | 66 | 96 | 90 | 76 | 56 | 57 | 59 | 60 | 88 | 75 |
| LCS Wizard | - | - | - | - | 54 | 96 | 74 | 78 | - | - | - | - | 86 | 86 |
| Mace | - | - | - | - | 49 | 71 | 74 | 63 | 38 | 44 | 43 | 46 | - | - |
| Mattern | 67 | 78 | 67 | 43 | 55 | 96 | 82 | 79 | 53 | 51 | 49 | 50 | 77 | 86 |
| McGill | 66 | 54 | 43 | - | 56 | 91 | 72 | 77 | - | - | - | - | - | - |
| Monument | - | - | - | 51 | 70 | 102 | 85 | 81 | 59 | 56 | 54 | 62 | - | - |
| N11MD2166W | - | - | - | - | 69 | 97 | 83 | 67 | 58 | 51 | 45 | 53 | - | - |
| N11MD2172 | 71 | 78 | 64 | 37 | 57 | 95 | 83 | 75 | 59 | 48 | 53 | 52 | 84 | 74 |
| NE07531 | - | - | - | 25 | - | - | - | - | - | - | - | - | 76 | 77 |
| NE09517 | 67 | 86 | 52 | 51 | 60 | 91 | 79 | 78 | 53 | 58 | 58 | 49 | 68 | 78 |
| NE10589 (Ruth) | 74 | 71 | 72 | 52 | 68 | 103 | 84 | 74 | 60 | 59 | 58 | 57 | 73 | 84 |

2016 WHEAT GRAIN YIELD RANK AT ALL LOCATIONS (CONT)

| Variety | Saline | Saunders | Lancaster | Clay | Keith | Furnas | Lincoln | Perkins | Cheyenne | Deuel | Banner | Box Butte RF | Box Butte Irr | Chase Irr |
|-----------------|--------|----------|-----------|------|-------|--------|---------|---------|----------|-------|--------|--------------|---------------|-----------|
| NE12561 | 65 | 78 | 71 | 60 | - | - | - | - | - | - | - | - | - | - |
| NE12589 | - | - | - | - | - | - | - | - | 47 | 53 | 42 | 61 | - | - |
| NI10718W | 74 | 74 | 55 | 33 | 59 | 92 | 80 | 75 | 48 | 49 | 37 | 50 | 83 | 81 |
| NI12702W | 55 | 81 | 69 | 52 | - | - | - | - | - | - | - | - | - | - |
| NI13706 | 67 | 75 | 67 | 54 | - | - | - | - | - | - | - | - | - | - |
| NW07505 | - | - | - | - | 56 | 89 | 86 | 73 | 40 | 48 | 49 | 50 | - | - |
| NX04Y2107W | 64 | 81 | 72 | 39 | 52 | 89 | 82 | 76 | 53 | 48 | 44 | 50 | 83 | 86 |
| Oakley CL | - | - | - | - | 65 | 100 | 87 | 81 | - | - | - | - | - | - |
| Overland | 65 | 55 | 57 | 35 | 58 | 91 | 71 | 80 | 48 | 52 | 48 | 57 | - | - |
| Panhandle | - | - | - | - | - | - | - | - | 48 | 52 | 55 | 53 | - | - |
| Pronghorn | - | - | - | - | - | - | - | - | 44 | 48 | 40 | 49 | - | - |
| PSB13NEDH-14-71 | 67 | 77 | 76 | 51 | 63 | 105 | 85 | 73 | 55 | 49 | 51 | 48 | 88 | 80 |
| Redfield | - | - | - | - | - | - | - | - | 57 | 52 | 42 | 55 | - | - |
| Robidoux | - | - | - | - | 64 | 101 | 87 | 91 | 53 | 58 | 53 | 62 | 76 | 84 |
| Scout 66 | 59 | 41 | 15 | 15 | 47 | 58 | 55 | 54 | 46 | 46 | 44 | 41 | - | - |
| Settler CL | - | - | - | - | 55 | 95 | 79 | 79 | 47 | 53 | 48 | 51 | 81 | 83 |
| Sunshine | - | - | - | - | 61 | 100 | 86 | 78 | 57 | 54 | 57 | 55 | 87 | 82 |
| SY Flint | 64 | 71 | 59 | 54 | 57 | 89 | 78 | 73 | - | - | - | - | 83 | 81 |
| SY Sunrise | - | - | - | - | 64 | 95 | 78 | 80 | 46 | 60 | 52 | 61 | 85 | 95 |
| SY Wolf | 71 | 87 | 76 | 47 | 63 | 91 | 72 | 81 | 52 | 54 | 50 | 54 | 98 | 85 |
| T158 | - | - | - | - | 60 | 94 | 84 | 78 | 55 | 52 | 58 | 60 | 82 | 84 |
| TAM 114 | - | - | - | - | 65 | 99 | 89 | 79 | 58 | 61 | 51 | 69 | 93 | 83 |
| Turkey | 59 | 32 | 15 | 13 | 47 | 56 | 52 | 54 | 36 | 42 | 34 | 34 | - | - |
| Warhorse | - | - | - | - | 58 | 88 | 85 | 67 | 54 | 43 | 52 | 51 | 83 | 68 |
| WB4303 | 63 | 90 | 67 | 56 | - | - | - | - | - | - | - | - | 97 | 90 |
| WB4458 | - | - | - | - | - | - | - | - | - | - | - | - | 77 | 102 |
| WB4721 | 65 | 87 | 72 | 56 | 59 | 105 | 79 | 73 | 54 | 56 | 47 | 53 | - | - |
| WB-Cedar | 65 | 82 | 63 | 40 | - | - | - | - | - | - | - | - | 75 | 95 |
| WB-Grainfield | 79 | 82 | 69 | 59 | 68 | 102 | 96 | 82 | 50 | 60 | 53 | 65 | 94 | 93 |
| WB-Quake | - | - | - | - | 52 | 88 | 74 | 63 | 48 | 38 | 44 | 46 | - | - |
| Wesley | 69 | 64 | 54 | 36 | 55 | 93 | 78 | 73 | 50 | 40 | 51 | 54 | 79 | 76 |
| Winterhawk | - | - | - | - | 64 | 100 | 86 | 86 | 48 | 55 | 53 | 50 | 94 | 89 |
| Zenda | 62 | 92 | 68 | 68 | - | - | - | - | - | - | - | - | - | - |

2016 WHEAT PROTEIN RANK AT ALL LOCATIONS

| Variety | Saline | Saunders | Lancaster | Clay | Keith | Furnas | Lincoln | Perkins | Cheyenne | Deuel | Banner | Box Butte RF | Chase Irr |
|-----------------|--------|----------|-----------|------|-------|--------|---------|---------|----------|-------|--------|--------------|-----------|
| "1863" | 12.2 | 12.8 | 13.6 | 14.3 | - | - | - | - | - | - | - | - | - |
| AC Emerson | 13.0 | 14.7 | 14.8 | 15.7 | - | - | - | - | - | - | - | - | - |
| Alliance | - | - | - | - | - | - | - | - | 13.7 | 10.7 | 11.7 | 11.4 | - |
| Antero | - | - | - | - | 10.3 | 14.1 | 11.2 | 11.8 | 14.2 | 9.7 | 11.2 | 11.1 | 13.3 |
| Anton (W) | - | - | - | - | - | - | - | - | - | - | - | - | 14.9 |
| Avery | - | - | - | - | 10.8 | 13.4 | 11.7 | 12.3 | 14.0 | 10.1 | 11.0 | 10.7 | 14.2 |
| Bearpaw | - | - | - | - | 11.4 | 14.3 | 12.5 | 13.4 | 14.9 | 11.8 | 11.7 | 11.9 | 14.5 |
| Brawl CI Plus | - | - | - | - | 12.0 | 14.5 | 12.9 | 14.6 | 15.1 | 11.4 | 12.1 | 12.6 | 15.4 |
| Buckskin | - | - | - | - | - | - | - | - | 14.7 | 10.9 | 12.1 | 12.3 | - |
| Byrd | - | - | - | - | 10.5 | 13.4 | 12.2 | 12.5 | 14.1 | 10.7 | 11.1 | 10.6 | 14.4 |
| Camelot | 11.8 | 14.5 | 14.2 | - | - | - | - | - | 14.4 | 10.6 | 12.6 | 12.0 | - |
| Cowboy | - | - | - | - | - | - | - | - | 13.5 | 10.5 | 12.3 | 10.8 | 15.0 |
| Denali | - | - | - | - | 10.3 | 14.1 | 12.1 | 13.1 | 14.1 | 10.7 | 11.5 | 11.5 | 14.5 |
| EXP HRW 15-14 | - | - | - | - | 10.8 | 13.4 | 12.2 | 12.2 | 14.7 | 10.6 | 11.0 | 10.9 | 15.0 |
| EXP16 | - | - | - | - | 11.1 | 14.0 | 12.4 | 13.7 | 14.9 | 10.3 | 12.0 | 11.5 | - |
| Freeman | 12.1 | 13.8 | 12.9 | 14.7 | 11.1 | 14.4 | 12.5 | 12.6 | 14.7 | 10.5 | 11.5 | 11.2 | - |
| Goodstreak | - | - | - | - | - | - | - | - | 14.8 | 11.7 | 12.0 | 11.9 | - |
| HRX1652 | 11.7 | 14.5 | 13.9 | 15.0 | 11.3 | 13.5 | 13.3 | 12.0 | 15.0 | 11.6 | 10.9 | - | 14.0 |
| Ideal | - | - | - | - | - | - | - | - | 14.4 | 10.6 | 12.7 | 11.6 | - |
| Infinity CL | - | - | - | - | 12.2 | 13.3 | 12.9 | 12.9 | 14.0 | 10.8 | 11.4 | 11.8 | - |
| Judee | - | - | - | - | 11.7 | 14.7 | 12.1 | 13.7 | 16.4 | 11.3 | 11.5 | 12.0 | 15.3 |
| KS11HW39-5-4 | - | - | - | - | 10.4 | 14.0 | 12.3 | 12.3 | - | - | - | - | - |
| KS12H56-6-4 | - | - | - | - | 10.4 | 13.0 | 11.0 | 11.8 | - | - | - | - | - |
| LCH13NEDH-14-69 | 12.3 | 14.0 | 13.5 | 14.7 | 10.7 | 13.8 | 12.9 | 12.6 | 14.6 | 10.7 | 12.8 | 11.5 | 14.6 |
| LCH13NEDH-5-59 | - | - | - | - | 11.2 | 14.0 | 12.1 | 12.7 | 14.7 | 10.9 | 11.9 | 11.6 | 15.3 |
| LCS Chrome | - | - | - | 16.0 | 11.6 | 14.3 | 12.8 | 12.6 | 16.1 | 11.1 | 13.0 | 12.3 | 14.7 |
| LCS Compass | - | - | - | - | - | - | - | - | 14.1 | 11.5 | 11.5 | 11.7 | - |
| LCS Mint | - | - | - | 14.2 | 11.1 | 12.6 | 11.8 | 12.6 | 14.8 | 10.3 | 11.7 | 11.2 | 14.7 |
| LCS Wizard | - | - | - | - | 11.7 | 14.2 | 12.2 | 12.9 | - | - | - | - | 14.5 |
| Mace | - | - | - | - | 12.1 | 14.2 | 13.0 | 13.6 | 13.8 | 11.0 | 12.1 | 11.8 | - |
| Mattern | 13.1 | 14.3 | 13.7 | 15.0 | 11.8 | 14.9 | 13.0 | 14.5 | 15.8 | 11.5 | 13.2 | 12.5 | 15.4 |
| McGill | 12.4 | 14.1 | 13.5 | - | 11.5 | 13.7 | 12.6 | 12.9 | - | - | - | - | - |
| Monument | - | - | - | 15.0 | 10.7 | 13.4 | 12.0 | 12.7 | 14.9 | 10.7 | 11.9 | 11.6 | - |
| N11MD2166W | - | - | - | - | 11.1 | 13.9 | 13.6 | 13.1 | 15.0 | 10.8 | 12.3 | 11.6 | - |
| N11MD2172 | 11.8 | 13.6 | 13.8 | 16.7 | 11.1 | 14.1 | 11.3 | 12.7 | 14.7 | 10.6 | 12.2 | 11.1 | 14.1 |
| NE07531 | - | - | - | 14.9 | - | - | - | - | - | - | - | - | 15.4 |
| NE09517 | 12.7 | 13.9 | 14.5 | 15.2 | 11.3 | 14.7 | 12.2 | 12.8 | 15.7 | 10.4 | 11.9 | 11.4 | 15.0 |
| NE10589 (Ruth) | 12.1 | 13.3 | 13.5 | 14.5 | 11.4 | 13.9 | 13.0 | 13.7 | 14.7 | 11.2 | 11.8 | 12.0 | 14.2 |
| NE12561 | 12.4 | 14.8 | 14.6 | 15.4 | - | - | - | - | - | - | - | - | - |

2016 WHEAT PROTEIN RANK AT ALL LOCATIONS (CONT)

| Variety | Saline | Saunders | Lancaster | Clay | Keith | Furnas | Lincoln | Perkins | Cheyenne | Deuel | Banner | Box Butte RF | Chase Irr |
|-----------------|--------|----------|-----------|------|-------|--------|---------|---------|----------|-------|--------|--------------|-----------|
| NE12589 | - | - | - | - | - | - | - | - | 14.8 | 11.0 | 12.7 | 11.4 | - |
| NI10718W | 11.9 | 13.6 | 14.2 | 15.5 | 11.1 | 13.4 | 13.0 | 12.6 | 14.4 | 11.2 | 11.9 | 11.2 | 14.1 |
| NI12702W | 13.4 | 15.0 | 14.0 | 16.1 | - | - | - | - | - | - | - | - | - |
| NI13706 | 12.6 | 14.4 | 14.1 | 15.5 | - | - | - | - | - | - | - | - | - |
| NW07505 | - | - | - | - | 10.8 | 13.4 | 12.3 | 13.5 | 14.8 | 10.9 | 11.8 | 11.2 | - |
| NX04Y2107W | 13.0 | 14.4 | 13.6 | 15.5 | 12.0 | 15.8 | 12.9 | 14.5 | 15.5 | 11.5 | 13.1 | 12.2 | 15.7 |
| Oakley CL | - | - | - | - | 11.0 | 13.9 | 12.4 | 12.2 | - | - | - | - | - |
| Overland | 12.3 | 13.4 | 13.4 | 14.5 | 11.6 | 14.0 | 13.1 | 12.6 | 14.3 | 11.0 | 11.4 | 11.3 | - |
| Panhandle | - | - | - | - | - | - | - | - | 15.3 | 11.6 | 11.6 | 11.8 | - |
| Pronghorn | - | - | - | - | - | - | - | - | 14.8 | 10.8 | 12.5 | 12.0 | - |
| PSB13NEDH-14-71 | 11.7 | 13.9 | 13.1 | 14.6 | 11.3 | 13.6 | 12.2 | 12.8 | 15.2 | 10.5 | 12.9 | 11.7 | 14.5 |
| Redfield | - | - | - | - | - | - | - | - | 15.1 | 11.0 | 12.9 | 11.8 | - |
| Robidoux | - | - | - | - | 11.2 | 14.1 | 13.3 | 12.9 | 14.7 | 10.5 | 11.9 | 12.2 | 14.8 |
| Scout 66 | 12.7 | 15.6 | 15.7 | 16.7 | 11.5 | 14.6 | 14.1 | 13.9 | 15.5 | 11.2 | 12.2 | 11.7 | - |
| Settler CL | - | - | - | - | 11.6 | 13.8 | 12.2 | 14.2 | 14.0 | 10.6 | 11.6 | 11.6 | 14.5 |
| Sunshine | - | - | - | - | 11.4 | 14.1 | 12.2 | 12.2 | 14.9 | 11.0 | 11.3 | 11.0 | 15.2 |
| SY Flint | 12.9 | 13.7 | 13.8 | 15.1 | 11.4 | 14.0 | 12.8 | 12.8 | - | - | - | - | 15.1 |
| SY Sunrise | - | - | - | - | 12.2 | 14.7 | 13.3 | 13.0 | 15.6 | 11.4 | 12.6 | 12.4 | 14.4 |
| SY Wolf | 12.3 | 15.3 | 14.5 | 15.4 | 11.3 | 14.6 | 13.2 | 13.1 | 15.5 | 11.3 | 11.5 | 12.4 | 14.8 |
| T158 | - | - | - | - | 11.3 | 14.1 | 12.7 | 12.8 | 14.5 | 11.0 | 11.6 | 11.2 | 14.7 |
| TAM 114 | - | - | - | - | 10.8 | 13.5 | 11.8 | 12.9 | 14.8 | 9.8 | 11.3 | 11.3 | 14.8 |
| Turkey | 13.2 | 16.0 | 15.8 | 17.1 | 11.7 | 15.4 | 14.5 | 15.4 | 15.4 | 11.4 | 13.1 | 13.1 | - |
| Warhorse | - | - | - | - | 11.7 | 14.5 | 12.4 | 14.3 | 16.2 | 11.5 | 12.7 | 12.7 | 16.6 |
| WB4303 | 12.3 | 14.2 | 13.0 | 14.9 | - | - | - | - | - | - | - | - | 15.4 |
| WB4458 | - | - | - | - | - | - | - | - | - | - | - | - | 15.0 |
| WB4721 | 12.6 | 14.4 | 13.9 | 15.6 | 11.5 | 14.7 | 12.6 | 13.6 | 16.6 | 11.0 | 13.8 | 12.1 | - |
| WB-Cedar | 13.2 | 14.6 | 15.4 | 16.3 | - | - | - | - | - | - | - | - | 14.6 |
| WB-Grainfield | 11.8 | 12.6 | 13.4 | 14.1 | 10.8 | 13.2 | 12.0 | 12.3 | 15.7 | 10.1 | 11.9 | 11.1 | 15.0 |
| WB-Quake | - | - | - | - | 11.1 | 14.5 | 12.5 | 13.5 | 14.9 | 11.6 | 12.6 | 12.6 | - |
| Wesley | 12.5 | 14.8 | 14.0 | 15.6 | 11.9 | 14.6 | 12.8 | 13.8 | 15.2 | 11.8 | 12.9 | 12.4 | 14.9 |
| Winterhawk | - | - | - | - | 10.8 | 13.3 | 12.3 | 12.0 | 14.1 | 10.5 | 11.5 | 11.2 | 14.8 |
| Zenda | 13.0 | 14.0 | 13.3 | 14.7 | - | - | - | - | - | - | - | - | - |

2016 WHEAT BUSHEL WEIGHT RANK AT ALL LOCATIONS

| Variety | Saline | Saunders | Lancaster | Keith | Furnas | Lincoln | Perkins | Cheyenne | Deuel | Banner | Box Butte RF | Box Butte Irr | Chase Irr |
|-----------------|--------|----------|-----------|-------|--------|---------|---------|----------|-------|--------|--------------|---------------|-----------|
| "1863" | 63 | 57 | 57 | - | - | - | - | - | - | - | - | - | - |
| AC Emerson | 60 | 52 | 55 | - | - | - | - | - | - | - | - | - | - |
| Alliance | - | - | - | - | - | - | - | 57 | 60 | 54 | 59 | - | - |
| Antero | - | - | - | 58 | 55 | 59 | 52 | 61 | 59 | 56 | 62 | 60 | 54 |
| Anton (W) | - | - | - | - | - | - | - | - | - | - | - | 60 | 52 |
| Avery | - | - | - | 58 | 55 | 58 | 55 | 60 | 58 | 55 | 60 | 59 | 52 |
| Bearpaw | - | - | - | 56 | 52 | 59 | 50 | 58 | 58 | 56 | 57 | 59 | 49 |
| Brawl CI Plus | - | - | - | 59 | 56 | 60 | 53 | 60 | 61 | 58 | 62 | 59 | 56 |
| Buckskin | - | - | - | - | - | - | - | 60 | 59 | 57 | 61 | - | - |
| Byrd | - | - | - | 59 | 56 | 59 | 54 | 60 | 58 | 56 | 60 | 59 | 54 |
| Camelot | 61 | 52 | 53 | - | - | - | - | 59 | 60 | 55 | 61 | - | - |
| Cowboy | - | - | - | - | - | - | - | 59 | 59 | 53 | 59 | 58 | 49 |
| Denali | - | - | - | 59 | 54 | 63 | 54 | 59 | 60 | 57 | 62 | 59 | 51 |
| EXP HRW 15-14 | - | - | - | 58 | 56 | 60 | 52 | 60 | 58 | 57 | 61 | 59 | 46 |
| EXP16 | - | - | - | 61 | 57 | 61 | 55 | 60 | 60 | 57 | 61 | - | - |
| Freeman | 60 | 55 | 55 | 57 | 57 | 59 | 53 | 58 | 58 | 56 | 59 | - | - |
| Goodstreak | - | - | - | - | - | - | - | 60 | 59 | 57 | 62 | - | - |
| HRX1652 | 62 | 52 | 56 | 58 | 56 | 60 | 52 | 60 | 59 | 58 | | 59 | 50 |
| Ideal | - | - | - | - | - | - | - | 60 | 60 | 54 | 61 | - | - |
| Infinity CL | - | - | - | 60 | 55 | 59 | 54 | 60 | 60 | 54 | 60 | - | - |
| Judee | - | - | - | 60 | 53 | 57 | 51 | 60 | 60 | 56 | 61 | 59 | 48 |
| KS11HW39-5-4 | - | - | - | 59 | 57 | 60 | 55 | - | - | - | - | - | - |
| KS12H56-6-4 | - | - | - | 58 | 57 | 60 | 52 | - | - | - | - | - | - |
| LCH13NEDH-14-69 | 62 | 57 | 57 | 60 | 55 | 60 | 53 | 61 | 60 | 56 | 62 | 60 | 54 |
| LCH13NEDH-5-59 | - | - | - | 60 | 55 | 58 | 54 | 59 | 61 | 55 | 60 | 58 | 51 |
| LCS Chrome | - | - | - | 58 | 55 | 58 | 54 | 60 | 60 | 56 | 59 | 59 | 52 |
| LCS Compass | - | - | - | - | - | - | - | 61 | 59 | 57 | 62 | - | - |
| LCS Mint | - | - | - | 59 | 56 | 60 | 54 | 61 | 59 | 59 | 63 | 60 | 55 |
| LCS Wizard | - | - | - | 58 | 56 | 59 | 54 | - | - | - | - | 59 | 53 |
| Mace | - | - | - | 56 | 50 | 59 | 51 | 57 | 59 | 54 | 59 | - | - |
| Mattern | 61 | 54 | 57 | 55 | 55 | 58 | 50 | 60 | 59 | 56 | 60 | 58 | 54 |
| McGill | 62 | 49 | 51 | 58 | 52 | 55 | 52 | - | - | - | - | - | - |
| Monument | - | - | - | 58 | 55 | 58 | 54 | 59 | 59 | 55 | 60 | - | - |
| N11MD2166W | - | - | - | 59 | 54 | 59 | 52 | 59 | 60 | 56 | 59 | - | - |
| N11MD2172 | 60 | 56 | 56 | 55 | 55 | 48 | 50 | 57 | 60 | 52 | 61 | 58 | 52 |
| NE07531 | - | - | - | - | - | - | - | - | - | - | - | 59 | 54 |
| NE09517 | 62 | 60 | 57 | 59 | 57 | 61 | 56 | 60 | 60 | 58 | 62 | 60 | 53 |
| NE10589 (Ruth) | 62 | 56 | 57 | 61 | 57 | 59 | 56 | 61 | 59 | 58 | 61 | 60 | 55 |

2016 WHEAT BUSHEL WEIGHT RANK AT ALL LOCATIONS (CONT)

| Variety | Saline | Saunders | Lancaster | Keith | Furnas | Lincoln | Perkins | Cheyenne | Deuel | Banner | Box Butte RF | Box Butte Irr | Chase Irr |
|-----------------|--------|----------|-----------|-------|--------|---------|---------|----------|-------|--------|--------------|---------------|-----------|
| NE12561 | 63 | 59 | 58 | - | - | - | - | - | - | - | - | - | - |
| NE12589 | - | - | - | - | - | - | - | 60 | 60 | 56 | 62 | - | - |
| NI10718W | 61 | 56 | 55 | 59 | 55 | 57 | 52 | 60 | 59 | 55 | 60 | 60 | 53 |
| NI12702W | 64 | 59 | 59 | - | - | - | - | - | - | - | - | - | - |
| NI13706 | 63 | 57 | 57 | - | - | - | - | - | - | - | - | - | - |
| NW07505 | - | - | - | 58 | 55 | 50 | 53 | 59 | 59 | 56 | 59 | - | - |
| NX04Y2107W | 61 | 52 | 55 | 57 | 55 | 56 | 50 | 59 | 61 | 56 | 61 | 58 | 52 |
| Oakley CL | - | - | - | 59 | 56 | 60 | 52 | - | - | - | - | - | - |
| Overland | 61 | 55 | 55 | 60 | 56 | 61 | 56 | 61 | 59 | 57 | 60 | - | - |
| Panhandle | - | - | - | - | - | - | - | 59 | 60 | 56 | 58 | - | - |
| Pronghorn | - | - | - | - | - | - | - | 61 | 59 | 56 | 60 | - | - |
| PSB13NEDH-14-71 | 63 | 57 | 57 | 61 | 57 | 61 | 56 | 61 | 60 | 57 | 62 | 60 | 54 |
| Redfield | - | - | - | - | - | - | - | 61 | 60 | 55 | 61 | - | - |
| Robidoux | - | - | - | 59 | 56 | 60 | 56 | 60 | 59 | 54 | 60 | 60 | 52 |
| Scout 66 | 62 | 56 | 36 | 58 | 54 | 57 | 52 | 60 | 59 | 57 | 61 | - | - |
| Settler CL | - | - | - | 57 | 56 | 59 | 53 | 58 | 59 | 54 | 60 | 59 | 52 |
| Sunshine | - | - | - | 56 | 56 | 57 | 51 | 61 | 60 | 58 | 61 | 60 | 51 |
| SY Flint | 62 | 58 | 57 | 56 | 54 | 59 | 50 | - | - | - | - | 59 | 52 |
| SY Sunrise | - | - | - | 59 | 57 | 60 | 53 | 60 | 60 | 57 | 61 | 59 | 56 |
| SY Wolf | 63 | 56 | 55 | 59 | 54 | 55 | 52 | 60 | 59 | 56 | 62 | 59 | 52 |
| T158 | - | - | - | 56 | 56 | 57 | 54 | 60 | 61 | 58 | 62 | 60 | 52 |
| TAM 114 | - | - | - | 59 | 56 | 48 | 55 | 61 | 59 | 59 | 62 | 61 | 55 |
| Turkey | 62 | 54 | 29 | 60 | 54 | 56 | 53 | 60 | 60 | 58 | 60 | - | - |
| Warhorse | - | - | - | 56 | 53 | 58 | 50 | 57 | 59 | 55 | 60 | 60 | 46 |
| WB4303 | 60 | 52 | 54 | - | - | - | - | - | - | - | - | 58 | 49 |
| WB4458 | - | - | - | - | - | - | - | - | - | - | - | 60 | 55 |
| WB4721 | 63 | 59 | 57 | 60 | 58 | 60 | 54 | 61 | 60 | 58 | 63 | - | - |
| WB-Cedar | 62 | 58 | 54 | - | - | - | - | - | - | - | - | 60 | 56 |
| WB-Grainfield | 62 | 58 | 57 | 60 | 59 | 59 | 55 | 61 | 60 | 58 | 61 | 60 | 53 |
| WB-Quake | - | - | - | 55 | 52 | 56 | 49 | 58 | 59 | 55 | 60 | - | - |
| Wesley | 62 | 53 | 52 | 58 | 54 | 59 | 52 | 60 | 59 | 53 | 59 | 59 | 54 |
| Winterhawk | - | - | - | 58 | 58 | 60 | 55 | 59 | 59 | 56 | 60 | 59 | 53 |
| Zenda | 63 | 60 | 57 | - | - | - | - | - | - | - | - | - | - |

2016 WINTER TRITICALE VARIETY TRIAL - LINCOLN, MEAD, SIDNEY, NE

| Entry Name | Grain Yield (lb/ac) | | | | | Rank | Plant height (in) | Heading (May Date) | |
|-----------------------------------|---------------------|-------------|-------------|-------------|-------------------------|------|-------------------|--------------------|--|
| | Mead | Lincoln | Sidney | Average | Average (Mead & Sidney) | | | | |
| NT13416 | 3573 | 1943 | 3976 | 3164 | 3775 | 1 | 53 | 16 | |
| NT15406 | 3949 | 2534 | 3108 | 3197 | 3529 | 2 | 51 | 14 | |
| NT12403 | 2936 | 2512 | 4074 | 3174 | 3505 | 3 | 50 | 15 | |
| NT11428 | 3471 | 2038 | 3359 | 2956 | 3415 | 4 | 57 | 19 | |
| NT15435 | 3105 | 1902 | 3525 | 2844 | 3315 | 5 | 55 | 19 | |
| NT15440 | 3627 | 2684 | 2977 | 3096 | 3302 | 6 | 56 | 20 | |
| NT05421 | 3257 | 1872 | 3250 | 2793 | 3254 | 7 | 55 | 17 | |
| NT15428 | 2792 | 1596 | 3705 | 2698 | 3249 | 8 | 48 | 14 | |
| NT15421 | 3523 | 1953 | 2960 | 2812 | 3242 | 9 | 54 | 15 | |
| NT07403 | 3457 | 2617 | 2993 | 3022 | 3225 | 10 | 49 | 13 | |
| NT06427 | 2965 | 2451 | 3482 | 2966 | 3224 | 11 | 48 | 18 | |
| NT15429 | 2319 | 1796 | 4022 | 2712 | 3171 | 12 | 50 | 17 | |
| NT14407 | 3220 | 2293 | 3068 | 2860 | 3144 | 13 | 52 | 16 | |
| NT15420 | 3173 | 1747 | 3065 | 2662 | 3119 | 14 | 54 | 19 | |
| NT15419 | 2621 | 2660 | 3412 | 2898 | 3017 | 15 | 51 | 18 | |
| NT13443 | 3185 | 1860 | 2723 | 2589 | 2954 | 16 | 60 | 20 | |
| NT09423 | 1983 | 2312 | 3815 | 2703 | 2899 | 17 | 52 | 19 | |
| NT15410 | 2194 | 2225 | 3567 | 2662 | 2881 | 18 | 51 | 15 | |
| NT15417 | 1827 | 2054 | 3882 | 2588 | 2855 | 19 | 53 | 17 | |
| NT12425 | 2701 | 1414 | 2984 | 2366 | 2843 | 20 | 56 | 20 | |
| NT06422 | 2445 | 1573 | 3066 | 2361 | 2756 | 21 | 52 | 16 | |
| NT15424 | 2648 | 2492 | 2830 | 2657 | 2739 | 22 | 54 | 18 | |
| NE426GT | 2297 | 2016 | 2759 | 2357 | 2528 | 23 | 51 | 18 | |
| NT12406 | 1484 | 1275 | 3560 | 2106 | 2522 | 24 | 51 | 17 | |
| NT15425 | 2068 | 1677 | 2916 | 2220 | 2492 | 25 | 57 | 18 | |
| NT14430 | 1959 | 1635 | 2878 | 2157 | 2419 | 26 | 50 | 14 | |
| NT14433 | 1773 | 1686 | 3046 | 2168 | 2410 | 27 | 60 | 18 | |
| NE422T | 1573 | 962 | 3149 | 1895 | 2361 | 28 | 61 | 27 | |
| OVERLAND (Winter Wheat) | 1734 | 1659 | 2819 | 2071 | 2277 | 29 | 40 | 22 | |
| NT441 | 787 | 466 | 2732 | 1328 | 1760 | 30 | 59 | 26 | |
| Average of all entries | 2622 | 1930 | 3257 | 2603 | 2939 | - | 53 | 18 | |
| Diff. req. for sign. at 5% | 961 | 491 | 575 | - | - | - | - | - | |

| | Bacterial Streak (1 - 9) | Bushel Weight (lb/bu) | Moisture (%) | Forage Quality components | | | |
|--|--------------------------|-----------------------|--------------|---------------------------|---------------------|-------------|-------------|
| | | | | Protein (%) | Forage Yield (bu/a) | Forage DM % | Forage Rank |
| | 2 | 50 | 10 | 15 | 12918 | 29 | 16 |
| | 2 | 51 | 9 | 14 | 13578 | 29 | 10 |
| | 4 | 50 | 9 | 15 | 12161 | 28 | 23 |
| | 2 | 50 | 9 | 15 | 12226 | 26 | 21 |
| | 2 | 49 | 9 | 16 | 12744 | 27 | 18 |
| | 1 | 48 | 9 | 16 | 14209 | 26 | 5 |
| | 2 | 50 | 9 | 16 | 15593 | 28 | 1 |
| | 3 | 49 | 10 | 15 | 12323 | 28 | 20 |
| | 2 | 49 | 9 | 15 | 13686 | 31 | 9 |
| | 2 | 49 | 9 | 14 | 13074 | 29 | 13 |
| | 2 | 46 | 9 | 16 | 12198 | 27 | 22 |
| | 2 | 48 | 9 | 16 | 14692 | 27 | 2 |
| | 2 | 50 | 10 | 14 | 14370 | 29 | 4 |
| | 2 | 49 | 9 | 15 | 11982 | 25 | 25 |
| | 3 | 49 | 9 | 15 | 14124 | 28 | 7 |
| | 1 | 51 | 9 | 17 | 14180 | 28 | 6 |
| | 2 | 48 | 10 | 16 | 12029 | 28 | 24 |
| | 2 | 49 | 9 | 15 | 12771 | 27 | 17 |
| | 2 | 48 | 9 | 16 | 12968 | 25 | 14 |
| | 4 | 50 | 9 | 17 | 13319 | 28 | 12 |
| | 3 | 46 | 9 | 15 | 12930 | 28 | 15 |
| | 1 | 49 | 9 | 16 | 12696 | 27 | 19 |
| | 3 | 48 | 9 | 15 | 13476 | 28 | 11 |
| | 4 | 47 | 9 | 16 | 11828 | 27 | 26 |
| | 2 | 49 | 9 | 15 | 14553 | 29 | 3 |
| | 6 | 48 | 9 | 15 | 11281 | 31 | 28 |
| | 3 | 50 | 9 | 16 | 13894 | 28 | 8 |
| | 2 | 50 | 10 | 17 | 11827 | 22 | 27 |
| | 4 | 53 | 9 | 14 | 10929 | 28 | 29 |
| | 3 | 45 | 9 | 15 | 10586 | 25 | 30 |
| | 3 | 49 | 9 | 15 | 12972 | 28 | - |
| | - | - | - | - | 2295 | 26 | - |

2016 WINTER BARLEY VARIETY TRIAL - LINCOLN, MEAD, SIDNEY, NE

| Entry Name | Yield (bu/ac) | | | | Sidney | | Julian Heading Date (Mean Post Jan. 1) | | |
|-------------------------|---------------|-------------|-------------|-----------|------------|----------------|--|------------|--|
| | Mead | Sidney | Average | Rank | Moist. (%) | Bu. Wt (lb/bu) | Lincoln | Mead | |
| NB14430 | 4909 | 2542 | 3725 | 1 | 8 | 46 | 121 | 125 | |
| NB11416 | 4331 | 2798 | 3564 | 2 | 8 | 47 | 123 | 126 | |
| NB15420 | 4350 | 2719 | 3534 | 3 | 8 | 47 | 119 | 124 | |
| NB14404 | 4346 | 2708 | 3527 | 4 | 8 | 48 | 120 | 124 | |
| NB15441 | 4427 | 2220 | 3323 | 5 | 6 | 31 | 119 | 124 | |
| NB14412 | 3785 | 2849 | 3317 | 6 | 8 | 46 | 121 | 127 | |
| NB11430 | 4356 | 2215 | 3286 | 7 | 8 | 48 | 120 | 124 | |
| NB14422 | 4133 | 2390 | 3261 | 8 | 8 | 47 | 122 | 125 | |
| NB12425 | 3917 | 2600 | 3259 | 9 | 6 | 32 | 127 | 128 | |
| NB12434 | 4407 | 2053 | 3230 | 10 | 5 | 31 | 121 | 123 | |
| NB13401 | 3800 | 2659 | 3229 | 11 | 8 | 47 | 121 | 125 | |
| NB11414 | 4168 | 2271 | 3220 | 12 | 6 | 32 | 123 | 125 | |
| NB15415 | 4098 | 2201 | 3149 | 13 | 6 | 32 | 120 | 123 | |
| NB99845 | 3754 | 2494 | 3124 | 14 | 8 | 47 | 124 | 127 | |
| NB10444 | 3884 | 2360 | 3122 | 15 | 5 | 31 | 124 | 128 | |
| NB14428 | 4305 | 1925 | 3115 | 16 | 8 | 47 | 123 | 125 | |
| NB15442 | 3839 | 2306 | 3072 | 17 | 8 | 45 | 118 | 124 | |
| NB15417 | 4016 | 2079 | 3048 | 18 | 5 | 31 | 120 | 124 | |
| TAMBAR 501 | 3917 | 2164 | 3040 | 19 | 5 | 31 | 119 | 123 | |
| NB15427 | 3597 | 2437 | 3017 | 20 | 9 | 48 | 120 | 125 | |
| NB12437 | 3757 | 2231 | 2994 | 21 | 6 | 32 | 127 | 129 | |
| NB14429 | 3712 | 2270 | 2991 | 22 | 6 | 32 | 120 | 123 | |
| P-713 | 3354 | 2585 | 2969 | 23 | 8 | 47 | 122 | 125 | |
| NB14433 | 3833 | 2099 | 2966 | 24 | 8 | 46 | 121 | 125 | |
| NB15443 | 3493 | 2211 | 2852 | 25 | 8 | 48 | 121 | 125 | |
| NB12419 | 3724 | 1963 | 2843 | 26 | 6 | 32 | 122 | 126 | |
| P-954 | 3276 | 2398 | 2837 | 27 | 9 | 48 | 126 | 127 | |
| NB14405 | 3294 | 2342 | 2818 | 28 | 8 | 47 | 127 | 128 | |
| NB14403 | 2913 | 2705 | 2809 | 29 | 9 | 48 | 118 | 123 | |
| NB15419 | 3251 | 2175 | 2713 | 30 | 5 | 32 | 126 | 126 | |
| NB13435 | 3093 | 2331 | 2712 | 31 | 6 | 33 | 124 | 127 | |
| NB15439 | 3766 | 1561 | 2664 | 32 | 5 | 30 | 122 | 126 | |
| NB15440 | 3584 | 1641 | 2612 | 33 | 5 | 30 | 121 | 124 | |
| NB15414 | 3498 | 1603 | 2551 | 34 | 3 | 15 | 118 | 123 | |
| NB10417 | 3027 | 2056 | 2541 | 35 | 6 | 32 | 118 | 123 | |
| P-721 | 2675 | 2354 | 2515 | 36 | 6 | 33 | 122 | 124 | |
| NB15435 | 3480 | 1416 | 2448 | 37 | 3 | 17 | 119 | 125 | |
| NB15409 | 2391 | 2470 | 2430 | 38 | 9 | 49 | 126 | 127 | |
| NB15410 | 2213 | 2027 | 2120 | 39 | 6 | 32 | 125 | 127 | |
| NB15412 | 3132 | 1101 | 2116 | 40 | 3 | 16 | 117 | 123 | |
| Average | 3695 | 2238 | 2967 | 21 | 7 | 38 | 122 | 125 | |
| Diff for sig. 5% | 556 | 989 | - | - | 5 | 31 | 2 | 1 | |

2016 WINTER BARLEY VARIETY TRIAL (CONTINUED)

| | Average Plant Height (in) | | | Lodging (1-9) | | Winter Survival (%) | | Bacterial Streak (1=res, 9=sus) | |
|--|---------------------------|-----------|-----------|---------------|----------|---------------------|------------|---------------------------------|------------|
| | Lincoln | Mead | Sidney | Lincoln | Mead | Lincoln | Mead | Lincoln | Mead |
| | 32 | 36 | 31 | 7 | 4 | 95 | 100 | 3.0 | 3.0 |
| | 36 | 39 | 35 | 7 | 4 | 99 | 100 | 2.8 | 1.8 |
| | 33 | 38 | 35 | 9 | 6 | 100 | 100 | 3.1 | 2.0 |
| | 37 | 39 | 35 | 7 | 6 | 97 | 100 | 1.7 | 1.7 |
| | 32 | 38 | 33 | 9 | 6 | 99 | 100 | 3.4 | 2.7 |
| | 32 | 36 | 32 | 7 | 2 | 100 | 100 | 4.3 | 2.6 |
| | 36 | 40 | 37 | 8 | 5 | 99 | 100 | 2.9 | 3.7 |
| | 32 | 36 | 30 | 7 | 2 | 100 | 100 | 5.1 | 1.0 |
| | 35 | 38 | 34 | 8 | 6 | 96 | 100 | 3.3 | 1.1 |
| | 33 | 37 | 32 | 7 | 5 | 100 | 100 | 2.9 | 2.0 |
| | 34 | 39 | 34 | 7 | 5 | 100 | 100 | 3.4 | 1.8 |
| | 35 | 39 | 34 | 8 | 3 | 97 | 100 | 2.9 | 2.4 |
| | 34 | 38 | 33 | 9 | 6 | 100 | 100 | 2.6 | 1.6 |
| | 33 | 37 | 30 | 8 | 5 | 100 | 100 | 2.6 | 2.4 |
| | 36 | 42 | 37 | 8 | 4 | 98 | 100 | 4.0 | 1.0 |
| | 33 | 38 | 33 | 8 | 2 | 95 | 100 | 3.6 | 1.0 |
| | 34 | 37 | 33 | 9 | 7 | 100 | 100 | 3.8 | 1.2 |
| | 36 | 39 | 35 | 9 | 5 | 99 | 100 | 2.2 | 1.8 |
| | 35 | 39 | 33 | 7 | 4 | 99 | 100 | 2.8 | 1.8 |
| | 36 | 37 | 35 | 7 | 7 | 100 | 100 | 2.7 | 0.9 |
| | 34 | 37 | 31 | 8 | 3 | 97 | 100 | 2.7 | 2.0 |
| | 33 | 38 | 34 | 8 | 4 | 92 | 97 | 3.8 | 0.8 |
| | 36 | 39 | 36 | 8 | 5 | 99 | 100 | 3.1 | 1.1 |
| | 33 | 37 | 33 | 8 | 7 | 90 | 100 | 3.3 | 1.0 |
| | 37 | 37 | 33 | 8 | 8 | 100 | 100 | 2.9 | 1.0 |
| | 37 | 39 | 33 | 8 | 4 | 93 | 100 | 2.4 | 1.9 |
| | 35 | 37 | 32 | 8 | 5 | 98 | 100 | 2.4 | 1.1 |
| | 37 | 42 | 39 | 8 | 6 | 98 | 100 | 2.5 | 1.2 |
| | 38 | 40 | 36 | 8 | 6 | 101 | 100 | 2.3 | 1.2 |
| | 35 | 40 | 35 | 8 | 5 | 93 | 100 | 2.7 | 1.0 |
| | 35 | 40 | 35 | 8 | 7 | 99 | 100 | 3.0 | 1.0 |
| | 35 | 39 | 36 | 8 | 4 | 98 | 100 | 3.0 | 1.1 |
| | 36 | 40 | 34 | 7 | 7 | 95 | 100 | 3.1 | 1.7 |
| | 34 | 38 | 35 | 6 | 6 | 99 | 100 | 3.3 | 0.9 |
| | 36 | 39 | 37 | 7 | 6 | 100 | 100 | 3.6 | 1.0 |
| | 35 | 38 | 34 | 8 | 8 | 99 | 100 | 3.2 | 1.0 |
| | 34 | 37 | 35 | 9 | 8 | 100 | 100 | 3.5 | 1.9 |
| | 35 | 39 | 37 | 9 | 7 | 98 | 100 | 3.5 | 0.9 |
| | 36 | 39 | 35 | 9 | 8 | 100 | 100 | 4.2 | 1.1 |
| | 34 | 39 | 34 | 9 | 6 | 97 | 100 | 2.5 | 2.5 |
| | 35 | 38 | 34 | 8 | 5 | 98 | 100 | 3 | 2 |
| | 2 | 2 | 1 | 1 | 2 | 4 | 2 | 1.1 | 1.9 |



UNIVERSITY OF NEBRASKA VARIETY TESTING PROGRAM

<http://cropwatch.unl.edu/varietytest>

PROVIDED BY

University of Nebraska-Lincoln Extension
Institute of Agriculture and Natural Resources
Department of Agronomy & Horticulture

Extension is a Division of the Institute of Agriculture and Natural Resources at the University of Nebraska–Lincoln cooperating with the Counties and the United States Department of Agriculture.

University of Nebraska–Lincoln Extension educational programs abide with the nondiscrimination policies of the University of Nebraska–Lincoln and the United States Department of Agriculture.

© 2016 University of Nebraska Board of Regents. All rights reserved.

UNIVERSITY OF
Nebraska
Lincoln